

ARG45282 anti-STBD1 antibody

Package: 50 µg
Store at: -20°C

Summary

Product Description	Polyclonal antibody recognizes STBD1
Tested Reactivity	Hu
Tested Application	FACS, ICC/IF, IHC-P, WB
Host	Rabbit
Clonality	Polyclonal
Isotype	Rabbit IgG
Target Name	STBD1
Species	Human
Immunogen	Recombinant protein containing to human STBD1.
Conjugation	Un-conjugated
Alternate Names	STBD1; Starch Binding Domain 1; GENX-3414; Starch-Binding Domain-Containing Protein 1; Glycophagy Cargo Receptor STBD1; Genethonin 1; FLJ41801; Genethonin-1; GENEX3414

Application Instructions

Application table	Application	Dilution
	FACS	1 - 3 µg/10 ⁶ cells
	ICC/IF	5 µg/ml
	IHC-P	2-5 µg/ml
	WB	0.25-0.5 µg/ml
Application Note	* The dilutions indicate recommended starting dilutions and the optimal dilutions or concentrations should be determined by the scientist.	
Observed Size	39 kDa	

Properties

Form	Liquid
Purification	Affinity purification with immunogen.
Buffer	0.2% Na ₂ HPO ₄ , 0.9% NaCl and 4% Trehalose.
Stabilizer	4% Trehalose
Concentration	0.5 mg/ml
Storage instruction	For continuous use, store undiluted antibody at 2-8°C for up to a week. For long-term storage, aliquot and store at -20°C or below. Storage in frost free freezers is not recommended. Avoid repeated freeze/thaw cycles. Suggest spin the vial prior to opening. The antibody solution should be gently mixed before use.

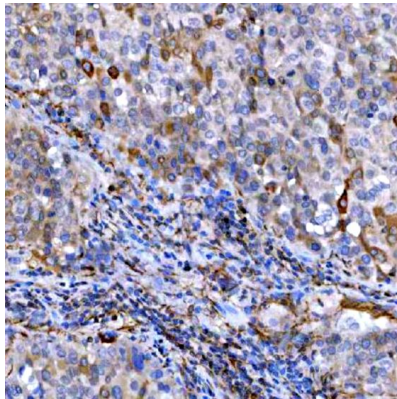
Note

For laboratory research only, not for drug, diagnostic or other use.

Bioinformation

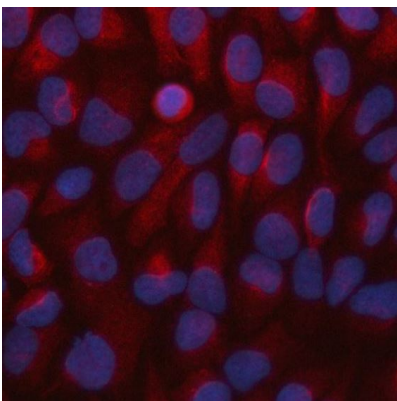
Gene Symbol	STBD1
Gene Full Name	Starch Binding Domain 1
Background	Enables enzyme binding activity and glycogen binding activity. Involved in glycopagy and intracellular transport. Located in T-tubule; endoplasmic reticulum; and perinuclear region of cytoplasm. [provided by Alliance of Genome Resources, Nov 2024]
Function	Acts as a cargo receptor for glycogen. Delivers its cargo to an autophagic pathway called glycopagy, resulting in the transport of glycogen to lysosomes. [UniProt]
Calculated Mw	39 kDa
PTM	Phosphoprotein; Ubl conjugation. [UniProt]
Cellular Localization	Cell membrane; Endoplasmic reticulum; Membrane. [UniProt]

Images



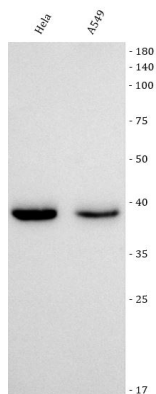
ARG45282 anti-STBD1 antibody IHC-P image

Immunohistochemistry: Human liver cancer stained with ARG45282 anti-STBD1 antibody at 2 µg/ml dilution.



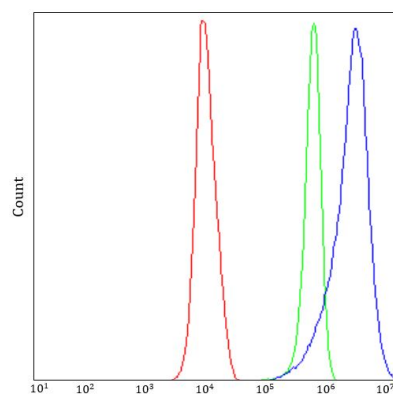
ARG45282 anti-STBD1 antibody ICC/IF image

Immunofluorescence: Hela stained with ARG45282 anti-STBD1 antibody at 5 ug/ml dilution.



ARG45282 anti-STBD1 antibody WB image

Western blot: HeLa and A549 stained with ARG45282 anti-STBD1 antibody at 0.5 $\mu\text{g}/\text{ml}$ dilution.



ARG45282 anti-STBD1 antibody FACS image

Flow Cytometry: PC-3 stained with ARG45282 anti-STBD1 antibody at 1 $\mu\text{g}/10^6$ cells dilution.