

ARG45272 anti-SHQ1 antibody

Package: 50 µg
Store at: -20°C

Summary

Product Description	Polyclonal antibody recognizes SHQ1
Tested Reactivity	Hu, Ms, Rat
Tested Application	FACS, ICC/IF, IHC-P, WB
Host	Rabbit
Clonality	Polyclonal
Isotype	Rabbit IgG
Target Name	SHQ1
Species	Human
Immunogen	Recombinant protein containing to human SHQ1.
Conjugation	Un-conjugated
Alternate Names	SHQ1, H/ACA Ribonucleoprotein Assembly Factor; Shq1p; Protein SHQ1 Homolog; FLJ10539; Gene Associated With Retinoid And Interferon-Induced Mortality 1; SHQ1 Homolog (S. Cerevisiae); SHQ1 Homolog; GRIM-1; DYT35; NEDDS

Application Instructions

Application table	Application	Dilution
	FACS	1 - 3 µg/10 ⁶ cells
	ICC/IF	5 µg/ml
	IHC-P	2-5 µg/ml
	WB	0.25-0.5 µg/ml
Application Note	* The dilutions indicate recommended starting dilutions and the optimal dilutions or concentrations should be determined by the scientist.	
Observed Size	80 kDa	

Properties

Form	Liquid
Purification	Affinity purification with immunogen.
Buffer	0.2% Na ₂ HPO ₄ , 0.9% NaCl and 4% Trehalose.
Stabilizer	4% Trehalose
Concentration	0.5 mg/ml
Storage instruction	For continuous use, store undiluted antibody at 2-8°C for up to a week. For long-term storage, aliquot and store at -20°C or below. Storage in frost free freezers is not recommended. Avoid repeated freeze/thaw cycles. Suggest spin the vial prior to opening. The antibody solution should be gently mixed

before use.

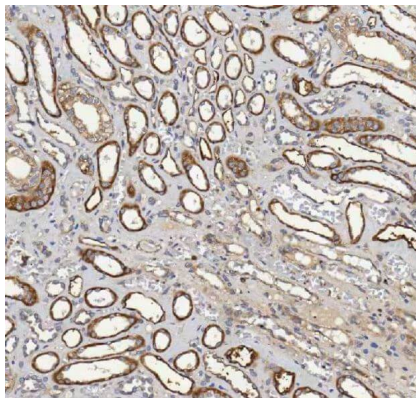
Note

For laboratory research only, not for drug, diagnostic or other use.

Bioinformation

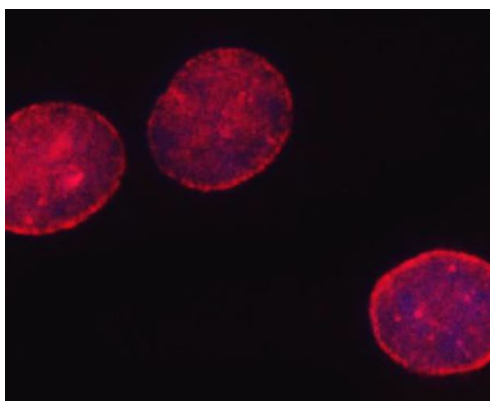
Gene Symbol	SHQ1
Gene Full Name	SHQ1, H/ACA Ribonucleoprotein Assembly Factor
Background	SHQ1 assists in the assembly of H/ACA-box ribonucleoproteins that function in the processing of ribosomal RNAs, modification of spliceosomal small nuclear RNAs, and stabilization of telomerase (see MIM 602322) (Grozdanov et al., 2009 [PubMed 19383767]).[supplied by OMIM, Dec 2010]
Function	Required for the quantitative accumulation of H/ACA ribonucleoproteins (RNPs), including telomerase, probably through the stabilization of DKC1, from the time of its synthesis until its association with NOP10, NHP2, and NAF1 at the nascent H/ACA RNA. [UniProt]
Calculated Mw	65 kDa
Cellular Localization	Cytoplasm; Nucleus. [UniProt]

Images



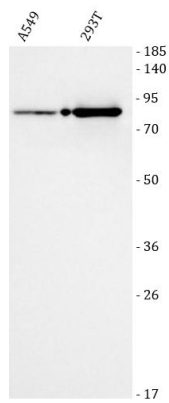
ARG45272 anti-SHQ1 antibody IHC-P image

Immunohistochemistry: Human renal cancer stained with ARG45272 anti-SHQ1 antibody at 2 µg/ml dilution.



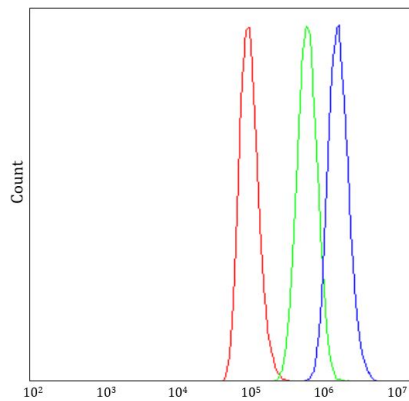
ARG45272 anti-SHQ1 antibody ICC/IF image

Immunofluorescence: A549 stained with ARG45272 anti-SHQ1 antibody at 5 µg/ml dilution.



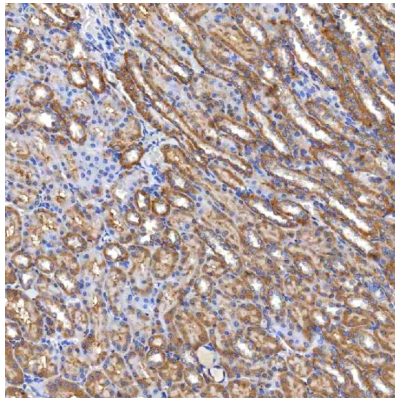
ARG45272 anti-SHQ1 antibody WB image

Western blot: A549 and 293T stained with ARG45272 anti-SHQ1 antibody at 0.5 $\mu\text{g}/\text{ml}$ dilution.



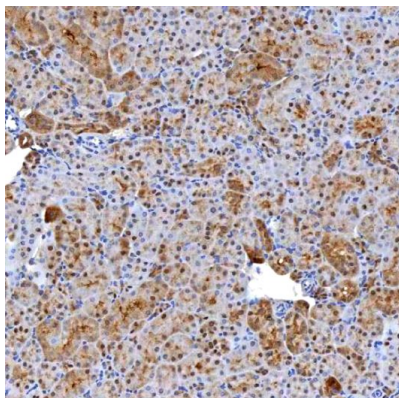
ARG45272 anti-SHQ1 antibody FACS image

Flow Cytometry: A549 stained with ARG45272 anti-SHQ1 antibody at 1 $\mu\text{g}/10^6$ cells dilution.



ARG45272 anti-SHQ1 antibody IHC-P image

Immunohistochemistry: Rat kidney stained with ARG45272 anti-SHQ1 antibody at 2 $\mu\text{g}/\text{ml}$ dilution.



ARG45272 anti-SHQ1 antibody IHC-P image

Immunohistochemistry: Mouse kidney stained with ARG45272 anti-SHQ1 antibody at 2 $\mu\text{g}/\text{ml}$ dilution.