

## ARG45265 anti-SDE2 antibody

Package: 50 µg  
Store at: -20°C

### Summary

Product Description	Polyclonal antibody recognizes SDE2
Tested Reactivity	Hu
Tested Application	FACS, ICC/IF, IHC-P, WB
Host	Rabbit
Clonality	Polyclonal
Isotype	Rabbit IgG
Target Name	SDE2
Species	Human
Immunogen	Recombinant protein containing to human SDE2.
Conjugation	Un-conjugated
Alternate Names	SDE2; SDE2 Telomere Maintenance Homolog; C1orf55; Replication Stress Response Regulator SDE2; Splicing Regulator SDE2; FLJ35382; SDE2 Telomere Maintenance Homolog (S. Pombe); Chromosome 1 Open Reading Frame 55; UPF0667 Protein C1orf55; Protein SDE2 Homolog; DJ671D7.1

### Application Instructions

Application table	Application	Dilution
	FACS	1 - 3 µg/10 <sup>6</sup> cells
	ICC/IF	5 µg/ml
	IHC-P	2-5 µg/ml
	WB	0.25-0.5 µg/ml
Application Note	* The dilutions indicate recommended starting dilutions and the optimal dilutions or concentrations should be determined by the scientist.	
Observed Size	54 kDa	

### Properties

Form	Liquid
Purification	Affinity purification with immunogen.
Buffer	0.2% Na <sub>2</sub> HPO <sub>4</sub> , 0.9% NaCl and 4% Trehalose.
Stabilizer	4% Trehalose
Concentration	0.5 mg/ml
Storage instruction	For continuous use, store undiluted antibody at 2-8°C for up to a week. For long-term storage, aliquot and store at -20°C or below. Storage in frost free freezers is not recommended. Avoid repeated freeze/thaw cycles. Suggest spin the vial prior to opening. The antibody solution should be gently mixed

before use.

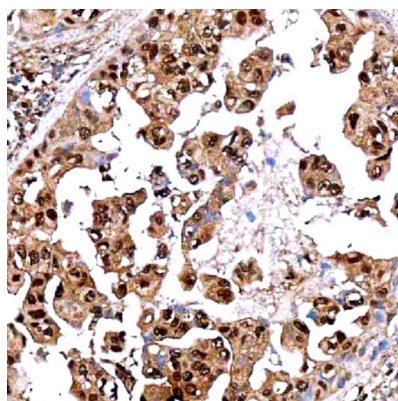
Note

For laboratory research only, not for drug, diagnostic or other use.

## Bioinformation

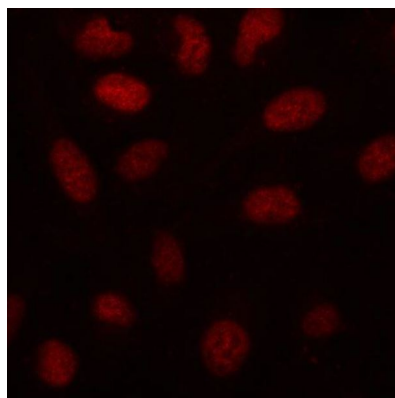
Gene Symbol	SDE2
Gene Full Name	SDE2 Telomere Maintenance Homolog
Background	Enables damaged DNA binding activity. Involved in several processes, including cellular response to UV; mitotic G1 DNA damage checkpoint signaling; and protein ubiquitination. Located in several cellular components, including Golgi apparatus; cytosol; and nuclear speck. [provided by Alliance of Genome Resources, Nov 2024]
Function	Inhibits translesion DNA synthesis by preventing monoubiquitination of PCNA, this is necessary to counteract damage due to ultraviolet light-induced replication stress. [UniProt]
Calculated Mw	50 kDa
PTM	Phosphoprotein; Ubl conjugation. [UniProt]
Cellular Localization	Cytoplasm; Nucleus. [UniProt]

## Images



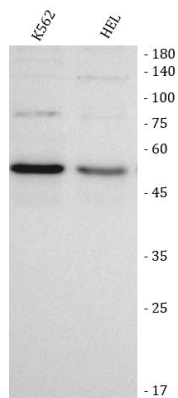
ARG45265 anti-SDE2 antibody IHC-P image

Immunohistochemistry: Human lung adenocarcinoma stained with ARG45265 anti-SDE2 antibody at 2 µg/ml dilution.



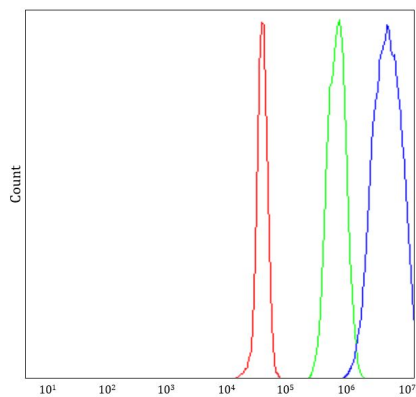
ARG45265 anti-SDE2 antibody ICC/IF image

Immunofluorescence: U2OS stained with ARG45265 anti-SDE2 antibody at 5 µg/ml dilution.



#### ARG45265 anti-SDE2 antibody WB image

Western blot: K562 and HEL stained with ARG45265 anti-SDE2 antibody at 0.5  $\mu\text{g/ml}$  dilution.



#### ARG45265 anti-SDE2 antibody FACS image

Flow Cytometry: Jurkat stained with ARG45265 anti-SDE2 antibody at 1  $\mu\text{g}/10^6$  cells dilution.