

## ARG45251 anti-UBE2M / UBC12 antibody

Package: 50 µg  
Store at: -20°C

### Summary

Product Description	Polyclonal antibody recognizes UBE2M / UBC12
Tested Reactivity	Hu, Ms, Rat
Tested Application	FACS, ICC/IF, IHC-P, WB
Host	Rabbit
Clonality	Polyclonal
Isotype	Rabbit IgG
Target Name	UBE2M / UBC12
Species	Human
Immunogen	Recombinant protein containing to human UBE2M / UBC12.
Conjugation	Un-conjugated
Alternate Names	UBE2M; Ubiquitin-conjugating enzyme E2 M; UBC-RS2; EC 6.3.2.-; hUbc12; UBC12; NEDD8 protein ligase; NEDD8-conjugating enzyme Ubc12; NEDD8 carrier protein

### Application Instructions

Application table	Application	Dilution
	FACS	1 - 3 µg/10 <sup>6</sup> cells
	ICC/IF	5 µg/ml
	IHC-P	1-2 µg/ml
	WB	0.25-0.5 µg/ml
Application Note	* The dilutions indicate recommended starting dilutions and the optimal dilutions or concentrations should be determined by the scientist.	
Observed Size	21 kDa	

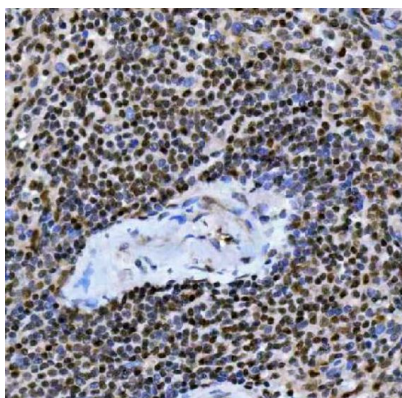
### Properties

Form	Liquid
Purification	Affinity purification with immunogen.
Buffer	0.2% Na <sub>2</sub> HPO <sub>4</sub> , 0.9% NaCl and 4% Trehalose.
Stabilizer	4% Trehalose
Concentration	0.5 mg/ml
Storage instruction	For continuous use, store undiluted antibody at 2-8°C for up to a week. For long-term storage, aliquot and store at -20°C or below. Storage in frost free freezers is not recommended. Avoid repeated freeze/thaw cycles. Suggest spin the vial prior to opening. The antibody solution should be gently mixed before use.

## Bioinformation

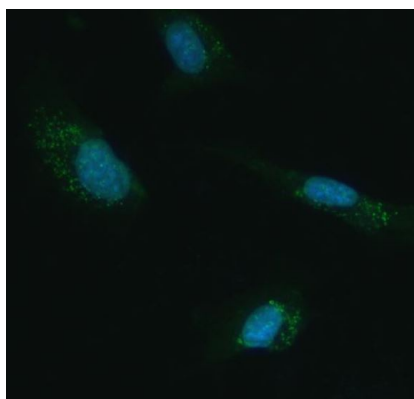
Gene Symbol	UBE2M
Gene Full Name	Ubiquitin Conjugating Enzyme E2 M
Background	The modification of proteins with ubiquitin is an important cellular mechanism for targeting abnormal or short-lived proteins for degradation. Ubiquitination involves at least three classes of enzymes: ubiquitin-activating enzymes, or E1s, ubiquitin-conjugating enzymes, or E2s, and ubiquitin-protein ligases, or E3s. This gene encodes a member of the E2 ubiquitin-conjugating enzyme family. The encoded protein is linked with a ubiquitin-like protein, NEDD8, which can be conjugated to cellular proteins, such as Cdc53/culin. [provided by RefSeq, Jul 2008]
Function	Accepts the ubiquitin-like protein NEDD8 from the UBA3-NAE1 E1 complex and catalyzes its covalent attachment to other proteins. The specific interaction with the E3 ubiquitin ligase RBX1, but not RBX2, suggests that the RBX1-UBE2M complex neddylates specific target proteins, such as CUL1, CUL2, CUL3 and CUL4. Involved in cell proliferation. [UniProt]
Calculated Mw	21 kDa
PTM	The acetylation of Met-1 increases affinity for DCUN1D1 by about 2 orders of magnitude and is crucial for NEDD8 transfer to cullins. [UniProt]
Cellular Localization	cytosol; glutamatergic synapse; nucleoplasm; nucleus; postsynapse; presynapse. [UniProt]

## Images



ARG45251 anti-UBE2M / UBC12 antibody IHC-P image

Immunohistochemistry: Human spleen stained with ARG45251 anti-UBE2M / UBC12 antibody at 2 µg/ml dilution.



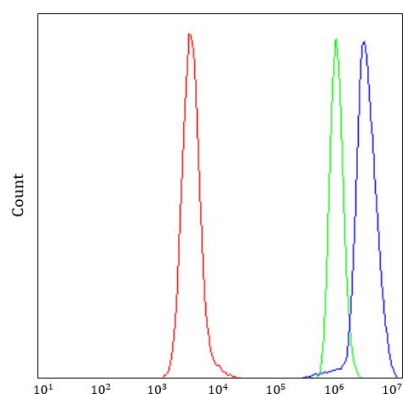
ARG45251 anti-UBE2M / UBC12 antibody ICC/IF image

Immunofluorescence: U87 stained with ARG45251 anti-UBE2M / UBC12 antibody at 5 µg/ml dilution.



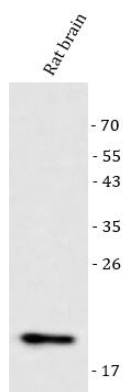
ARG45251 anti-UBE2M / UBC12 antibody WB image

Western blot: 293T and Ramos stained with ARG45251 anti-UBE2M / UBC12 antibody at 0.5 µg/ml dilution.



ARG45251 anti-UBE2M / UBC12 antibody FACS image

Flow Cytometry: Daudi stained with ARG45251 anti-UBE2M / UBC12 antibody at 1 µg/10<sup>6</sup> cells dilution.



ARG45251 anti-UBE2M / UBC12 antibody WB image

Western blot: Rat brain stained with ARG45251 anti-UBE2M / UBC12 antibody at 0.5 µg/ml dilution.



ARG45251 anti-UBE2M / UBC12 antibody WB image

Western blot: Mouse brain stained with ARG45251 anti-UBE2M / UBC12 antibody at 0.5 µg/ml dilution.