

ARG45248 anti-EPLIN antibody

Package: 50 µg
Store at: -20°C

Summary

Product Description	Polyclonal antibody recognizes EPLIN
Tested Reactivity	Hu
Tested Application	FACS, ICC/IF, IHC-P, WB
Host	Rabbit
Clonality	Polyclonal
Isotype	Rabbit IgG
Target Name	EPLIN
Species	Human
Immunogen	Recombinant protein containing to human EPLIN.
Conjugation	Un-conjugated
Alternate Names	LIMA1; LIM Domain And Actin Binding 1; EPLIN; Epithelial Protein Lost In Neoplasm Beta; LIM Domain And Actin-Binding Protein 1; SREBP3; Sterol Regulatory Element Binding Protein 3; Epithelial Protein Lost In Neoplasm; LDLCQ8

Application Instructions

Application table	Application	Dilution
	FACS	1 - 3 µg/10 ⁶ cells
	ICC/IF	5 µg/ml
	IHC-P	2-5 µg/ml
	WB	0.25-0.5 µg/ml
Application Note	* The dilutions indicate recommended starting dilutions and the optimal dilutions or concentrations should be determined by the scientist.	
Observed Size	85 kDa; 100 kDa	

Properties

Form	Liquid
Purification	Affinity purification with immunogen.
Buffer	0.2% Na ₂ HPO ₄ , 0.9% NaCl and 4% Trehalose.
Stabilizer	4% Trehalose
Concentration	0.5 mg/ml
Storage instruction	For continuous use, store undiluted antibody at 2-8°C for up to a week. For long-term storage, aliquot and store at -20°C or below. Storage in frost free freezers is not recommended. Avoid repeated freeze/thaw cycles. Suggest spin the vial prior to opening. The antibody solution should be gently mixed

before use.

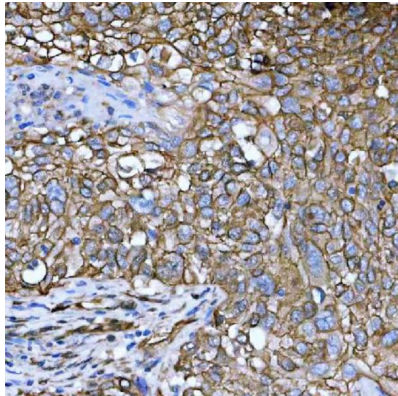
Note

For laboratory research only, not for drug, diagnostic or other use.

Bioinformation

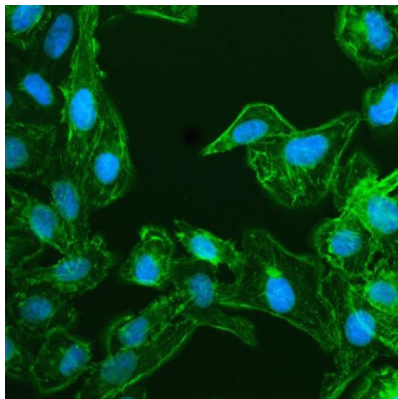
Gene Symbol	LIMA1
Gene Full Name	LIM Domain And Actin Binding 1
Background	This gene encodes a cytoskeleton-associated protein that inhibits actin filament depolymerization and cross-links filaments in bundles. It is downregulated in some cancer cell lines. Alternatively spliced transcript variants encoding different isoforms have been described for this gene, and expression of some of the variants maybe independently regulated. [provided by RefSeq, Aug 2011].
Function	Actin-binding protein involved in actin cytoskeleton regulation and dynamics. Increases the number and size of actin stress fibers and inhibits membrane ruffling. Inhibits actin filament depolymerization. Bundles actin filaments, delays filament nucleation and reduces formation of branched filaments. [UniProt]
Calculated Mw	85 kDa
PTM	Acetylation ; Phosphoprotein. [UniProt]
Cellular Localization	Cell junction ; Cell membrane ; Cell projection ; Cytoplasm ; Cytoskeleton ; Membrane. [UniProt]

Images



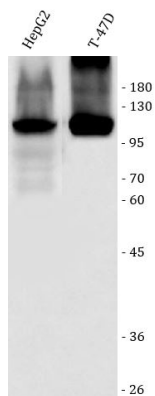
ARG45248 anti-EPLIN antibody IHC-P image

Immunohistochemistry: Human lung squamous cell carcinoma stained with ARG45248 anti-EPLIN antibody at 2 µg/ml dilution.



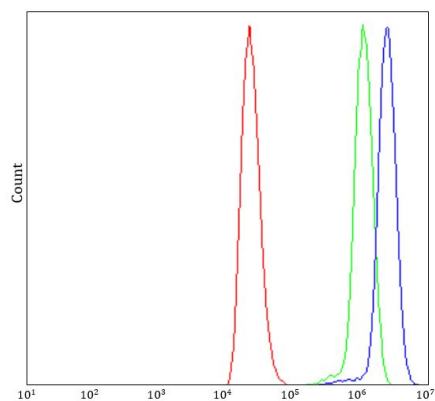
ARG45248 anti-EPLIN antibody ICC/IF image

Immunofluorescence: U2OS stained with ARG45248 anti-EPLIN antibody at 5 µg/ml dilution.



ARG45248 anti-EPLIN antibody WB image

Western blot: HepG2 and T-47D stained with ARG45248 anti-EPLIN antibody at 0.5 $\mu\text{g}/\text{ml}$ dilution.



ARG45248 anti-EPLIN antibody FACS image

Flow Cytometry: THP-1 stained with ARG45248 anti-EPLIN antibody at 1 $\mu\text{g}/10^6$ cells dilution.