

ARG45223 anti-RGS12 antibody

Package: 50 µg
Store at: -20°C

Summary

Product Description	Rabbit Polyclonal antibody recognizes RGS12
Tested Reactivity	Hu, Rat
Tested Application	ICC/IF, IHC-P, WB
Host	Rabbit
Clonality	Polyclonal
Isotype	Rabbit IgG
Target Name	RGS12
Species	Human
Immunogen	Recombinant protein containing to human RGS12.
Conjugation	Un-conjugated
Alternate Names	RGS12; Regulator Of G Protein Signaling 12; Regulator Of G-Protein Signaling 12; Regulator Of G-Protein Signalling 12

Application Instructions

Application table	Application	Dilution
	ICC/IF	5 µg/ml
	IHC-P	2-5 µg/ml
	WB	0.25-0.5 µg/ml
Application Note	* The dilutions indicate recommended starting dilutions and the optimal dilutions or concentrations should be determined by the scientist.	
Observed Size	156 kDa	

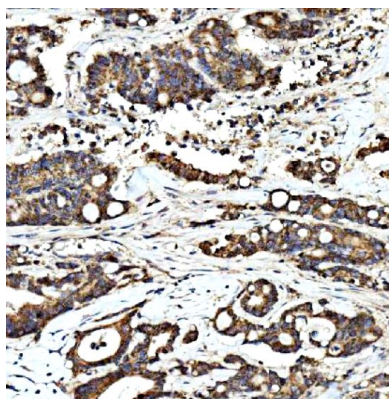
Properties

Form	Liquid
Purification	Affinity purification with immunogen.
Buffer	0.2% Na ₂ HPO ₄ , 0.9% NaCl and 4% Trehalose.
Stabilizer	4% Trehalose
Concentration	0.5 mg/ml
Storage instruction	For continuous use, store undiluted antibody at 2-8°C for up to a week. For long-term storage, aliquot and store at -20°C or below. Storage in frost free freezers is not recommended. Avoid repeated freeze/thaw cycles. Suggest spin the vial prior to opening. The antibody solution should be gently mixed before use.

Bioinformation

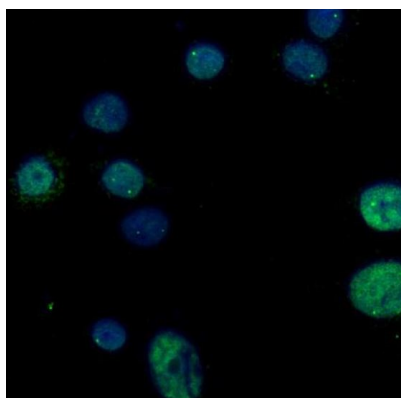
Gene Symbol	RGS12
Gene Full Name	Regulator Of G Protein Signaling 12
Background	This gene encodes a member of the 'regulator of G protein signaling' (RGS) gene family. The encoded protein may function as a guanosine triphosphatase (GTPase)-activating protein as well as a transcriptional repressor. This protein may play a role in tumorigenesis. Multiple transcript variants encoding distinct isoforms have been identified for this gene. Other alternative splice variants have been described but their biological nature has not been determined. [provided by RefSeq, Jul 2008]
Function	Regulates G protein-coupled receptor signaling cascades. Inhibits signal transduction by increasing the GTPase activity of G protein alpha subunits, thereby driving them into their inactive GDP-bound form.. [UniProt]
Calculated Mw	156 kDa
PTM	Isopeptide bond; Methylation; Phosphoprotein; Ubl conjugation. [UniProt]
Cellular Localization	Cell projection; Cytoplasm; Nucleus; Synapse. [UniProt]

Images



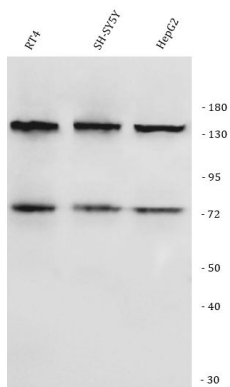
ARG45223 anti-RGS12 antibody IHC-P image

Immunohistochemistry: Human rectum adenocarcinoma stained with ARG45223 anti-RGS12 antibody at 2 µg/ml dilution.



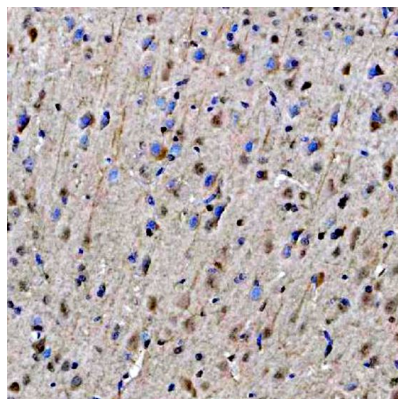
ARG45223 anti-RGS12 antibody ICC/IF image

Immunofluorescence: A549 stained with ARG45223 anti-RGS12 antibody at 5 ug/ml dilution.



ARG45223 anti-RGS12 antibody WB image

Western blot: RT4, SH-SY5Y, and HepG2 stained with ARG45223 anti-RGS12 antibody at 0.5 $\mu\text{g/ml}$ dilution.



ARG45223 anti-RGS12 antibody IHC-P image

Immunohistochemistry: Rat brain stained with ARG45223 anti-RGS12 antibody at 2 $\mu\text{g/ml}$ dilution.