

ARG45214 anti-Mkl1 / MRTFA antibody

Package: 50 µg
Store at: -20°C

Summary

Product Description	Rabbit Polyclonal antibody recognizes Mkl1 / MRTFA
Tested Reactivity	Hu
Tested Application	ICC/IF, WB
Host	Rabbit
Clonality	Polyclonal
Isotype	Rabbit IgG
Target Name	Mkl1 / MRTFA
Species	Human
Immunogen	Recombinant protein containing to human Mkl1 / MRTFA.
Conjugation	Un-conjugated
Alternate Names	MRTFA; Myocardin Related Transcription Factor A; MRTF-A; MAL; KIAA1438; BSAC; MKL1; MKL; Megakaryoblastic Leukemia (Translocation) 1; Myocardin-Related Transcription Factor A; Megakaryocytic Acute Leukemia Protein; Megakaryoblastic Leukemia 1 Protein; Basic, SAP And Coiled-Coil Domain; MKL/Myocardin-Like Protein 1; Megakaryocytic Acute Leukemia; Alternative Protein MKL1

Application Instructions

Application table	Application	Dilution
	ICC/IF	5 µg/ml
	WB	0.25-0.5 µg/ml
Application Note	* The dilutions indicate recommended starting dilutions and the optimal dilutions or concentrations should be determined by the scientist.	
Observed Size	145 kDa	

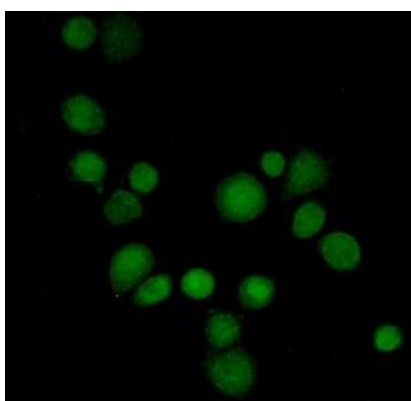
Properties

Form	Liquid
Purification	Affinity purification with immunogen.
Buffer	0.2% Na ₂ HPO ₄ , 0.9% NaCl and 4% Trehalose.
Stabilizer	4% Trehalose
Concentration	0.5 mg/ml
Storage instruction	For continuous use, store undiluted antibody at 2-8°C for up to a week. For long-term storage, aliquot and store at -20°C or below. Storage in frost free freezers is not recommended. Avoid repeated freeze/thaw cycles. Suggest spin the vial prior to opening. The antibody solution should be gently mixed before use.

Bioinformation

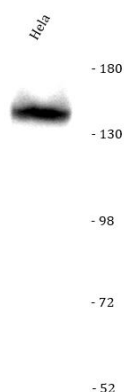
Gene Symbol	MRTFA
Gene Full Name	Myocardin Related Transcription Factor A
Background	The protein encoded by this gene interacts with the transcription factor myocardin, a key regulator of smooth muscle cell differentiation. The encoded protein is predominantly nuclear and may help transduce signals from the cytoskeleton to the nucleus. This gene is involved in a specific translocation event that creates a fusion of this gene and the RNA-binding motif protein-15 gene. This translocation has been associated with acute megakaryocytic leukemia. Alternative splicing results in multiple transcript variants. [provided by RefSeq, Sep 2013]
Function	Transcription coactivator that associates with the serum response factor (SRF) transcription factor to control expression of genes regulating the cytoskeleton during development, morphogenesis and cell migration. [UniProt]
Calculated Mw	98 kDa
PTM	Phosphoprotein. [UniProt]
Cellular Localization	Cytoplasm; Nucleus. [UniProt]

Images



ARG45214 anti-Mkl1 / MRTFA antibody ICC/IF image

Immunofluorescence: SiHa stained with ARG45214 anti-Mkl1 / MRTFA antibody at 5 ug/ml dilution.



ARG45214 anti-Mkl1 / MRTFA antibody WB image

Western blot: Hela stained with ARG45214 anti-Mkl1 / MRTFA antibody at 0.5 µg/ml dilution.