

## ARG45192 anti-OTULIN antibody

Package: 50 µg  
Store at: -20°C

### Summary

Product Description	Rabbit Polyclonal antibody recognizes OTULIN
Tested Reactivity	Hu, Ms, Rat
Tested Application	FACS, ICC/IF, IHC-P, WB
Host	Rabbit
Clonality	Polyclonal
Isotype	Rabbit IgG
Target Name	OTULIN
Species	Human
Immunogen	Recombinant protein containing to human OTULIN.
Conjugation	Un-conjugated
Alternate Names	OTULIN; OTU Deubiquitinase With Linear Linkage Specificity; Ubiquitin Thioesterase Otulin; FAM105B; OTU Domain-Containing Deubiquitinase With Linear Linkage Specificity; Family With Sequence Similarity 105, Member B; Deubiquitinating Enzyme Otulin; Ubiquitin Thioesterase Gumby; FLJ34884; EC 3.4.19.12; IMD107; Gumby; AIPDS; GUM

### Application Instructions

Application table	Application	Dilution
	FACS	1 - 3 µg/10 <sup>6</sup> cells
	ICC/IF	5 µg/ml
	IHC-P	2-5 µg/ml
	WB	0.1-0.25 µg/ml
Application Note	* The dilutions indicate recommended starting dilutions and the optimal dilutions or concentrations should be determined by the scientist.	
Observed Size	43-45 kDa	

### Properties

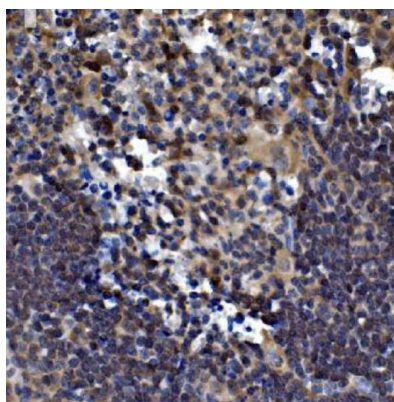
Form	Liquid
Purification	Affinity purification with immunogen.
Buffer	0.9% NaCl, 0.2% Na <sub>2</sub> HPO <sub>4</sub> , 0.01% Sodium azide and 4% Trehalose.
Preservative	0.01% Sodium azide
Stabilizer	4% Trehalose
Concentration	0.5 mg/ml

Storage instruction	For continuous use, store undiluted antibody at 2-8°C for up to a week. For long-term storage, aliquot and store at -20°C or below. Storage in frost free freezers is not recommended. Avoid repeated freeze/thaw cycles. Suggest spin the vial prior to opening. The antibody solution should be gently mixed before use.
Note	For laboratory research only, not for drug, diagnostic or other use.

## Bioinformation

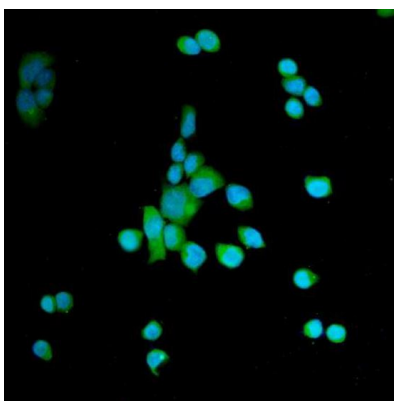
Gene Symbol	OTULIN
Gene Full Name	OTU Deubiquitinase With Linear Linkage Specificity
Background	This gene encodes a member of the peptidase C65 family of ubiquitin isopeptidases. Members of this family remove ubiquitin from proteins. The encoded enzyme specifically recognizes and removes M1(Met1)-linked, or linear, ubiquitin chains from protein substrates. Linear ubiquitin chains are known to regulate the NF-kappa B signaling pathway in the context of immunity and inflammation. Mutations in this gene cause a potentially fatal autoinflammatory syndrome in human patients. [provided by RefSeq, Sep 2016]
Function	Deubiquitinase that specifically removes linear ('Met-1'-linked) polyubiquitin chains to substrates and acts as a regulator of angiogenesis and innate immune response . [UniProt]
Calculated Mw	40 kDa
PTM	Acetylation; Phosphoprotein; Ubl conjugation. [UniProt]
Cellular Localization	Cytoplasm. [UniProt]

## Images



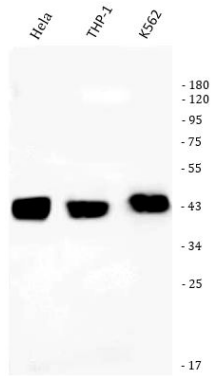
ARG45192 anti-OTULIN antibody IHC-P image

Immunohistochemistry: Human appendicitis stained with ARG45192 anti-OTULIN antibody at 2 µg/ml dilution.



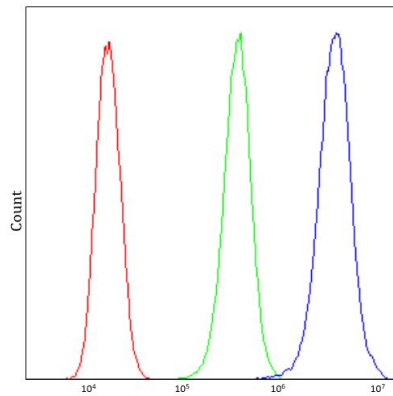
ARG45192 anti-OTULIN antibody ICC/IF image

Immunofluorescence: SIHA stained with ARG45192 anti-OTULIN antibody at 5 ug/ml dilution.



ARG45192 anti-OTULIN antibody WB image

Western blot: HeLa, THP-1, and K562 stained with ARG45192 anti-OTULIN antibody at 0.5 µg/ml dilution.



ARG45192 anti-OTULIN antibody FACS image

Flow Cytometry: 293T stained with ARG45192 anti-OTULIN antibody at 1 µg/10<sup>6</sup> cells dilution.



ARG45192 anti-OTULIN antibody WB image

Western blot: Rat liver stained with ARG45192 anti-OTULIN antibody at 0.5 µg/ml dilution.



ARG45192 anti-OTULIN antibody WB image

Western blot: Mouse liver stained with ARG45192 anti-OTULIN antibody at 0.5 µg/ml dilution.