

## ARG45166 anti-beta 2 Microglobulin antibody

Package: 50 µg  
Store at: -20°C

### Summary

Product Description	Rabbit Polyclonal antibody recognizes beta 2 Microglobulin
Tested Reactivity	Ms, Rat
Tested Application	FACS, ICC/IF, WB
Host	Rabbit
Clonality	Polyclonal
Isotype	Rabbit IgG
Target Name	beta 2 Microglobulin
Species	Rat
Immunogen	Recombinant protein containing to rat beta 2 Microglobulin.
Conjugation	Un-conjugated
Alternate Names	Beta-2-microglobulin; B2m

### Application Instructions

Application table	Application	Dilution
	FACS	1 - 3 µg/10 <sup>6</sup> cells
	ICC/IF	5 µg/ml
	WB	0.1-0.25 µg/ml
Application Note	* The dilutions indicate recommended starting dilutions and the optimal dilutions or concentrations should be determined by the scientist.	
Observed Size	13 kDa	

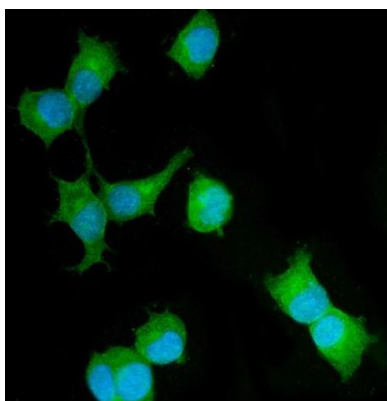
### Properties

Form	Liquid
Purification	Affinity purification with immunogen.
Buffer	0.2% Na <sub>2</sub> HPO <sub>4</sub> , 0.9% NaCl, 0.05% Sodium azide and 4% Trehalose.
Preservative	0.05% Sodium azide
Stabilizer	4% Trehalose
Concentration	0.5 mg/ml
Storage instruction	For continuous use, store undiluted antibody at 2-8°C for up to a week. For long-term storage, aliquot and store at -20°C or below. Storage in frost free freezers is not recommended. Avoid repeated freeze/thaw cycles. Suggest spin the vial prior to opening. The antibody solution should be gently mixed before use.

## Bioinformation

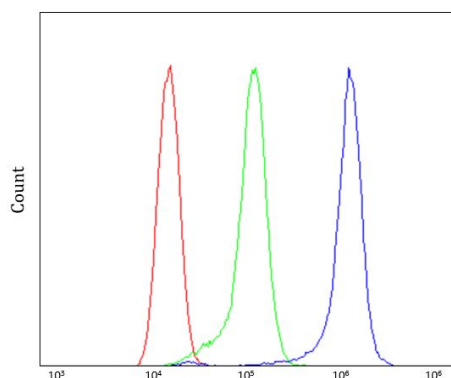
Gene Symbol	B2M
Gene Full Name	beta-2 microglobulin
Background	This gene encodes a serum protein found in association with the major histocompatibility complex (MHC) class I heavy chain on the surface of nearly all nucleated cells. The protein has a predominantly beta-pleated sheet structure that can form amyloid fibrils in some pathological conditions. The encoded antimicrobial protein displays antibacterial activity in amniotic fluid. A mutation in this gene has been shown to result in hypercatabolic hypoproteinemia.[provided by RefSeq, Aug 2014]
Function	Component of the class I major histocompatibility complex (MHC). Involved in the presentation of peptide antigens to the immune system.. [UniProt]
Calculated Mw	14 kDa
PTM	Disulfide bond. [UniProt]
Cellular Localization	Secreted. [UniProt]

## Images



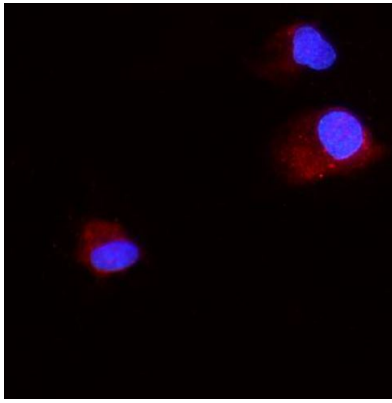
ARG45166 anti-beta 2 Microglobulin antibody ICC/IF image

Immunofluorescence: HEPA1-6 stained with ARG45166 anti-beta 2 Microglobulin antibody at 2 µg/ml dilution.



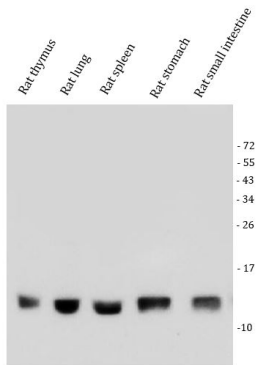
ARG45166 anti-beta 2 Microglobulin antibody FACS image

Flow Cytometry: RH35 stained with ARG45166 anti-beta 2 Microglobulin antibody at 1 µg/10<sup>6</sup> cells dilution.



ARG45166 anti-beta 2 Microglobulin antibody ICC/IF image

Immunofluorescence: NRK stained with ARG45166 anti-beta 2 Microglobulin antibody at 2 ug/ml dilution.



ARG45166 anti-beta 2 Microglobulin antibody WB image

Western blot: Rat thymus, rat lung, rat spleen, rat stomach, and rat small intestine stained with ARG45166 anti-beta 2 Microglobulin antibody at 0.25 µg/ml dilution.



ARG45166 anti-beta 2 Microglobulin antibody WB image

Western blot: Mouse thymus stained with ARG45166 anti-beta 2 Microglobulin antibody at 0.25 µg/ml dilution.