

ARG45120 anti-YTHDF2 antibody

Package: 50 µg
Store at: -20°C

Summary

Product Description	Rabbit Polyclonal antibody recognizes YTHDF2
Tested Reactivity	Hu, Ms, Rat
Tested Application	FACS, ICC/IF, IHC-P, WB
Host	Rabbit
Clonality	Polyclonal
Isotype	IgG
Target Name	YTHDF2
Species	Human
Immunogen	Synthetic peptide derived from Human YTHDF2.
Conjugation	Un-conjugated
Alternate Names	YTHDF2; YTH N6-Methyladenosine RNA Binding Protein F2; HGRG8; NY-REN-2; CAHL; YTH N(6)-Methyladenosine RNA Binding Protein 2; YTH N6-Methyladenosine RNA Binding Protein 2; YTH Domain-Containing Family Protein 2; High-Glucose-Regulated Protein 8; Renal Carcinoma Antigen NY-REN-2; CLL-Associated Antigen KW-14; YTH Domain Family, Member 2; DF2; YTH Domain Family; 9430020E02Rik

Application Instructions

Application table	Application	Dilution
	FACS	1-3 µg/10 ⁶ cells
	ICC/IF	1:50 - 1:200
	IHC-P	1:50 - 1:200
	WB	1:500 - 1:1000
Application Note	* The dilutions indicate recommended starting dilutions and the optimal dilutions or concentrations should be determined by the scientist.	

Properties

Form	Liquid
Purification	Affinity purification with immunogen.
Buffer	0.9% NaCl, 0.2% Na ₂ HPO ₄ , 0.01% Sodium azide and 4% Trehalose.
Preservative	0.01% Sodium azide
Stabilizer	4% Trehalose
Storage instruction	For continuous use, store undiluted antibody at 2-8°C for up to a week. For long-term storage, aliquot and store at -20°C or below. Storage in frost free freezers is not recommended. Avoid repeated

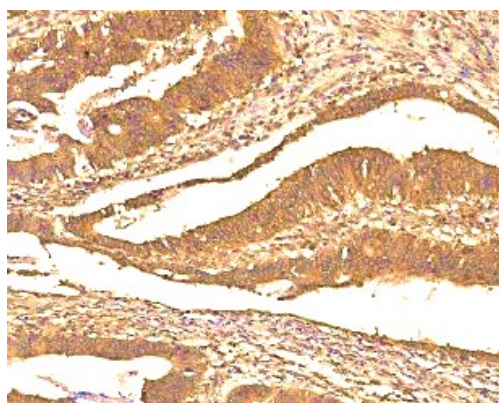
freeze/thaw cycles. Suggest spin the vial prior to opening. The antibody solution should be gently mixed before use.

Note For laboratory research only, not for drug, diagnostic or other use.

Bioinformation

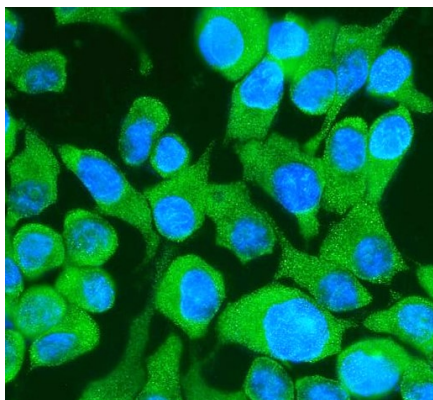
Gene Symbol	YTHDF2
Gene Full Name	YTH N6-Methyladenosine RNA Binding Protein F2
Background	This gene encodes a member of the YTH (YT521-B homology) superfamily containing YTH domain. The YTH domain is typical for the eukaryotes and is particularly abundant in plants. The YTH domain is usually located in the middle of the protein sequence and may function in binding to RNA. In addition to a YTH domain, this protein has a proline rich region which may be involved in signal transduction. An Alu-rich domain has been identified in one of the introns of this gene, which is thought to be associated with human longevity. In addition, reciprocal translocations between this gene and the Runx1 (AML1) gene on chromosome 21 has been observed in patients with acute myeloid leukemia. This gene was initially mapped to chromosome 14, which was later turned out to be a pseudogene. Alternatively spliced transcript variants encoding different isoforms have been identified in this gene. [provided by RefSeq, Oct 2012]
Function	May also recognize and bind RNAs modified by C5-methylcytosine (m5C) and act as a regulator of rRNA processing. [Uniprot]
Highlight	Related news: m6A reader YTHDF2 in mRNA decay and aggresome formation;
Calculated Mw	62 kDa
PTM	Acetylation, Phosphoprotein, Ubl conjugation. [Uniprot]
Cellular Localization	Cytoplasm, Nucleus. [Uniprot]

Images



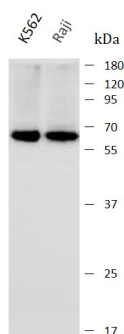
ARG45120 anti-YTHDF2 antibody IHC-P image

Immunohistochemistry: Human rectal cancer stained with ARG45120 anti-YTHDF2 antibody at 2 µg/ml dilution.



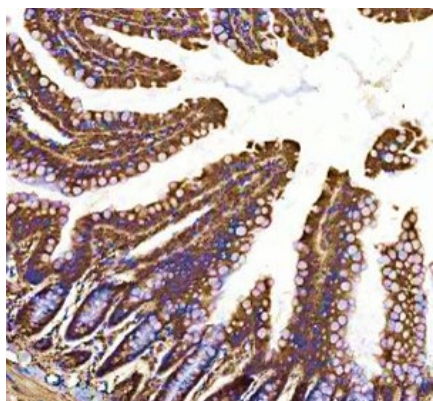
ARG45120 anti-YTHDF2 antibody ICC/IF image

Immunofluorescence: Hep stained with ARG45120 anti-YTHDF2 antibody at 5 $\mu\text{g/ml}$ dilution.



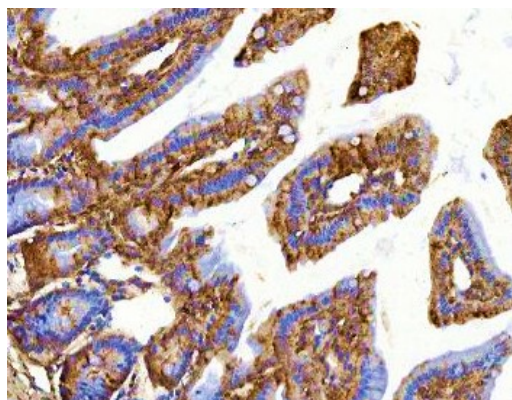
ARG45120 anti-YTHDF2 antibody WB image

Western blot: K562, Raji stained with ARG45120 anti-YTHDF2 antibody at 0.25 $\mu\text{g/ml}$ dilution.



ARG45120 anti-YTHDF2 antibody IHC-P image

Immunohistochemistry: Rat intestine stained with ARG45120 anti-YTHDF2 antibody at 2 $\mu\text{g/ml}$ dilution.



ARG45120 anti-YTHDF2 antibody IHC-P image

Immunohistochemistry: Mouse intestine stained with ARG45120 anti-YTHDF2 antibody at 2 $\mu\text{g/ml}$ dilution.

ARG45120 anti-YTHDF2 antibody WB image

Western blot: Mouse testis stained with ARG45120 anti-YTHDF2 antibody at 0.25 µg/ml dilution.

