

ARG45094 anti-GRC5 / PHF2 antibody

Package: 50 µl
Store at: -20°C

Summary

Product Description	Rabbit Polyclonal antibody recognizes GRC5 / PHF2
Tested Reactivity	Hu
Tested Application	WB
Host	Rabbit
Clonality	Polyclonal
Isotype	IgG
Target Name	GRC5 / PHF2
Species	Human
Immunogen	Synthetic peptide corresponding to residues from an internal region of the 120 kDa PHF protein
Conjugation	Un-conjugated
Alternate Names	PHF2; PHD Finger Protein 2; CENP-35; KIAA0662; JHDM1E; KDM7C; Jumonji C Domain-Containing Histone Demethylase 1E; Lysine-Specific Demethylase PHF2; Centromere Protein 35; GRC5; EC 1.14.11.-

Application Instructions

Application table	Application	Dilution
	WB	1:500-1:1000
Application Note	* The dilutions indicate recommended starting dilutions and the optimal dilutions or concentrations should be determined by the scientist.	

Properties

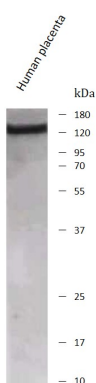
Form	Liquid
Purification	Antigen Affinity Purified.
Buffer	PBS, 0.02% NaN3
Storage instruction	For continuous use, store undiluted antibody at 2-8°C for up to a week. For long-term storage, aliquot and store at -20°C or below. Storage in frost free freezers is not recommended. Avoid repeated freeze/thaw cycles. Suggest spin the vial prior to opening. The antibody solution should be gently mixed before use.
Note	For laboratory research only, not for drug, diagnostic or other use.

Bioinformation

Gene Symbol	PHF2
Gene Full Name	PHD Finger Protein 2

Background	This gene encodes a protein which contains a zinc finger-like PHD (plant homeodomain) finger, distinct from other classes of zinc finger motifs, and a hydrophobic and highly conserved domain. The PHD finger shows the typical Cys4-His-Cys3 arrangement. PHD finger genes are thought to belong to a diverse group of transcriptional regulators possibly affecting eukaryotic gene expression by influencing chromatin structure. [provided by RefSeq, Jul 2008]
Function	Involved in the activation of toll-like receptor 4 (TLR4)-target inflammatory genes in macrophages by catalyzing the demethylation of trimethylated histone H4 lysine 20 (H4K20me3) at the gene promoters. [Uniprot]
Calculated Mw	121 kDa
PTM	Acetylation, Isopeptide bond, Phosphoprotein, Ubl conjugation. [Uniprot]
Cellular Localization	Centromere, Chromosome, Kinetochore, Nucleus. [Uniprot]

Images



ARG45094 anti-GRC5 / PHF2 antibody WB image

Western blot: Human placenta stained with ARG45094 anti-GRC5 / PHF2 antibody.