

ARG44561 anti-SEPT7 antibody

Package: 50 µl
Store at: -20°C

Summary

Product Description	Rabbit Polyclonal antibody recognizes SEPT7
Tested Reactivity	Hu, Ms, Rat
Tested Application	IHC-P, WB
Host	Rabbit
Clonality	Polyclonal
Isotype	IgG
Target Name	SEPT7
Species	Human
Immunogen	Human Septin 7 Recombinant fusion protein (a.a. 307-436).
Conjugation	Un-conjugated
Alternate Names	SEPTIN7; Septin 7; Septin-7; SEPT7A; CDC10; SEPT7; CDC3; CDC10 Protein Homolog; CDC10 (Cell Division Cycle 10, S. Cerevisiae, Homolog); CDC10 Cell Division Cycle 10 Homolog (S. Cerevisiae); NBLA02942

Application Instructions

Application table	Application	Dilution
	IHC-P	1:50 - 1:200
	WB	1:500 - 1:1000
Application Note	* The dilutions indicate recommended starting dilutions and the optimal dilutions or concentrations should be determined by the scientist.	

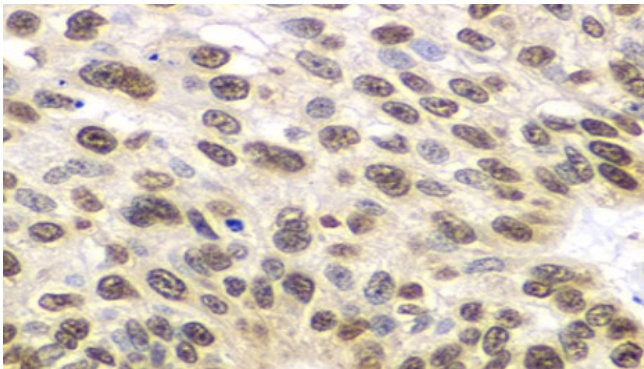
Properties

Form	Liquid
Purification	Affinity Purified Antibody
Buffer	PBS (pH 7.3), 0.02% Sodium azide and 50% Glycerol.
Preservative	0.02% Sodium azide
Stabilizer	50% Glycerol
Storage instruction	For continuous use, store undiluted antibody at 2-8°C for up to a week. For long-term storage, aliquot and store at -20°C or below. Storage in frost free freezers is not recommended. Avoid repeated freeze/thaw cycles. Suggest spin the vial prior to opening. The antibody solution should be gently mixed before use.
Note	For laboratory research only, not for drug, diagnostic or other use.

Bioinformation

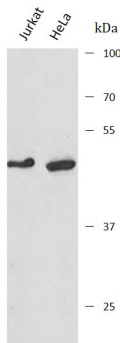
Gene Symbol	SEPTIN7
Gene Full Name	septin 7
Background	This gene encodes a protein that is highly similar to the CDC10 protein of <i>Saccharomyces cerevisiae</i> . The protein also shares similarity with Diff 6 of <i>Drosophila</i> and with H5 of mouse. Each of these similar proteins, including the yeast CDC10, contains a GTP-binding motif. The yeast CDC10 protein is a structural component of the 10 nm filament which lies inside the cytoplasmic membrane and is essential for cytokinesis. This human protein functions in gliomagenesis and in the suppression of glioma cell growth, and it is required for the association of centromere-associated protein E with the kinetochore. Alternative splicing results in multiple transcript variants. Several related pseudogenes have been identified on chromosomes 5, 7, 9, 10, 11, 14, 17 and 19. [provided by RefSeq, Jul 2011]
Function	Filament-forming cytoskeletal GTPase. Required for normal organization of the actin cytoskeleton. Required for normal progress through mitosis. Involved in cytokinesis. Required for normal association of CENPE with the kinetochore. Plays a role in ciliogenesis and collective cell movements. Forms a filamentous structure with SEPTIN12, SEPTIN6, SEPTIN2 and probably SEPTIN4 at the sperm annulus which is required for the structural integrity and motility of the sperm tail during postmeiotic differentiation (PubMed:25588830). [Uniprot]
Research Area	Cell Biology and Cellular Response antibody
Calculated Mw	51 kDa
PTM	Acetylation, Phosphoprotein. [Uniprot]
Cellular Localization	Cell projection, Centromere, Chromosome, Cilium, Cytoplasm, Cytoskeleton, Flagellum, Kinetochore. [Uniprot]

Images



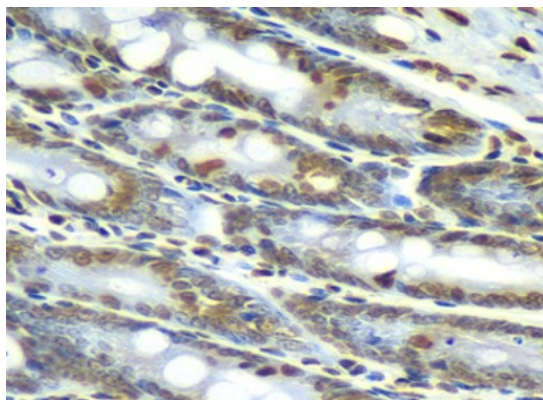
ARG44561 anti-SEPT7 antibody IHC-P image

Immunohistochemistry: Human lung cancer stained with ARG44561 anti-SEPT7 antibody at 1:100 dilution.



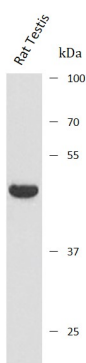
ARG44561 anti-SEPT7 antibody WB image

Western blot: Jurkat and HeLa stained with ARG44561 anti-SEPT7 antibody.



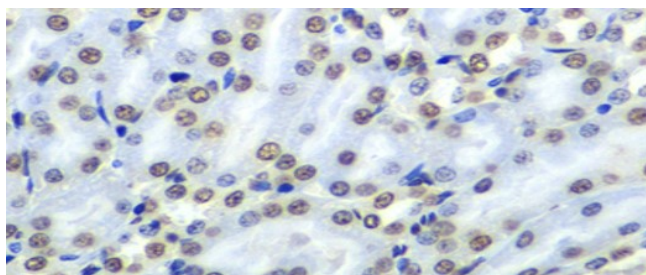
ARG44561 anti-SEPT7 antibody IHC-P image

Immunohistochemistry: Rat Intestine stained with ARG44561 anti-SEPT7 antibody at 1:100 dilution.



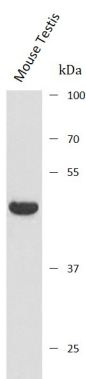
ARG44561 anti-SEPT7 antibody WB image

Western blot: Rat testis stained with ARG44561 anti-SEPT7 antibody.



ARG44561 anti-SEPT7 antibody IHC-P image

Immunohistochemistry: Mouse kidney stained with ARG44561 anti-SEPT7 antibody at 1:100 dilution.



ARG44561 anti-SEPT7 antibody WB image

Western blot: Mouse testis stained with ARG44561 anti-SEPT7 antibody.