

## ARG44528 anti-SLFN13 antibody

Package: 50 µg  
Store at: -20°C

### Summary

Product Description	Rabbit Polyclonal antibody recognizes SLFN13
Tested Reactivity	Hu
Tested Application	WB
Host	Rabbit
Clonality	Polyclonal
Isotype	IgG
Target Name	SLFN13
Species	Human
Immunogen	Human SLFN13 recombinant protein
Conjugation	Un-conjugated
Alternate Names	SLFN13; Schlafen Family Member 13; Schlafen-13; FLJ31952; HSLFN13

### Application Instructions

Application table	Application	Dilution
	WB	0.25-0.5 µg/ml
Application Note	The dilutions indicate recommended starting dilutions and the optimal dilutions or concentrations should be determined by the scientist.	

### Properties

Form	Liquid
Purification	Affinity purified with Immunogen.
Buffer	0.9% NaCl, 0.2% Na <sub>2</sub> HPO <sub>4</sub> , 0.05% Sodium azide and 4% Trehalose.
Preservative	0.05% Sodium azide
Stabilizer	4% Trehalose
Concentration	0.5 mg/ml
Storage instruction	For continuous use, store undiluted antibody at 2-8°C for up to a week. For long-term storage, aliquot and store at -20°C or below. Storage in frost free freezers is not recommended. Avoid repeated freeze/thaw cycles. Suggest spin the vial prior to opening. The antibody solution should be gently mixed before use.
Note	For laboratory research only, not for drug, diagnostic or other use.

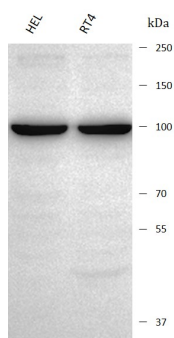
### Bioinformation

Gene Symbol	SLFN13
Gene Full Name	Schlafen Family Member 13
Background	Enables endoribonuclease activity. Involved in rRNA catabolic process and tRNA catabolic process. Located in cytoplasm
Function	Endoribonuclease that cleaves tRNAs and rRNAs.
Calculated Mw	102 kDa
Cellular Localization	Cytoplasm

## Images

---

ARG44528 anti-SLFN13 antibody WB image



Western blot: HEL and RT4 stained with ARG44528 anti-SLFN13 antibody at 0.5 µg/mL dilution.

---