

ARG44496 anti-HAUS3 antibody

Package: 50 µg
Store at: -20°C

Summary

Product Description	Rabbit Polyclonal antibody recognizes HAUS3
Tested Reactivity	Hu, Ms, Rat
Tested Application	FACS, ICC/IF, WB
Host	Rabbit
Clonality	Polyclonal
Isotype	IgG
Target Name	HAUS3
Species	Human
Immunogen	Human HAUS3 recombinant protein
Conjugation	Un-conjugated
Alternate Names	HAUS3; HAUS Augmin Like Complex Subunit 3; C4orf15; Dgt3; IT1; HAUS Augmin-Like Complex Subunit 3; MGC4701; Chromosome 4 Open Reading Frame 15

Application Instructions

Application table	Application	Dilution
	FACS	1-3 µg/10 ⁶ cells
	ICC/IF	5 µg/ml
	WB	0.25-0.5 µg/ml
Application Note	The dilutions indicate recommended starting dilutions and the optimal dilutions or concentrations should be determined by the scientist.	

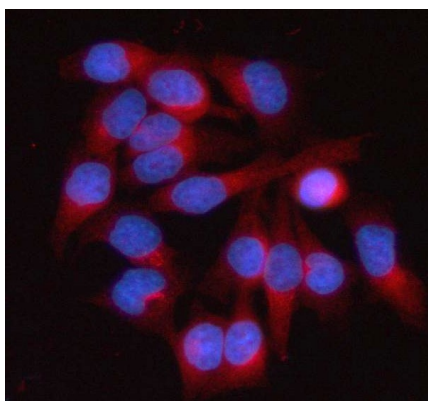
Properties

Form	Liquid
Purification	Affinity purified with Immunogen.
Buffer	0.9% NaCl, 0.2% Na ₂ HPO ₄ , 0.05% Sodium azide and 4% Trehalose.
Preservative	0.05% Sodium azide
Stabilizer	4% Trehalose
Concentration	0.5 mg/ml
Storage instruction	For continuous use, store undiluted antibody at 2-8°C for up to a week. For long-term storage, aliquot and store at -20°C or below. Storage in frost free freezers is not recommended. Avoid repeated freeze/thaw cycles. Suggest spin the vial prior to opening. The antibody solution should be gently mixed before use.

Bioinformation

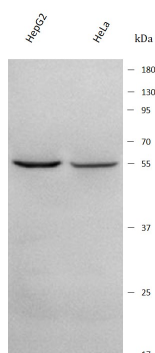
Gene Symbol	HAUS3
Gene Full Name	HAUS Augmin Like Complex Subunit 3
Background	This gene encodes a component of the HAUS augmin-like protein complex, which plays a key role in cytokinesis and mitosis. Disruption of the encoded protein causes mitotic defects resulting from fragmentation of centrosomes and microtubule destabilization. This gene shares its 5' exons with some transcripts from overlapping GeneID: 353497, which encodes a DNA polymerase. Alternative splicing results in multiple transcript variants.
Function	Contributes to mitotic spindle assembly, maintenance of centrosome integrity and completion of cytokinesis as part of the HAUS augmin-like complex.
Calculated Mw	70 kDa
PTM	Acetylation
Cellular Localization	Cytoplasm, Cytoskeleton, Microtubule

Images



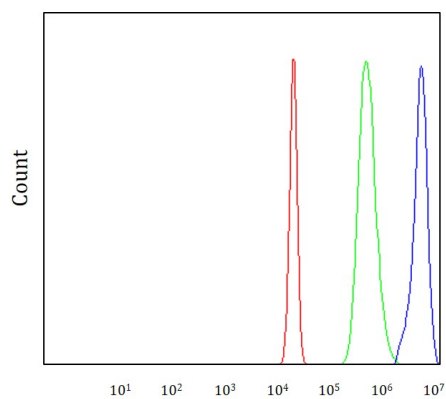
ARG44496 anti-HAUS3 antibody ICC/IF image

Immunofluorescence: HeLa stained with ARG44496 anti-HAUS3 antibody at 5 µg/mL dilution.



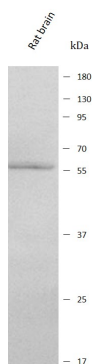
ARG44496 anti-HAUS3 antibody WB image

Western blot: HepG2 and HeLa stained with ARG44496 anti-HAUS3 antibody at 0.5 µg/mL dilution.



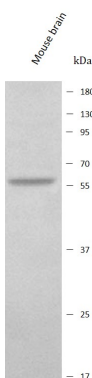
ARG44496 anti-HAUS3 antibody FACS image

Flow Cytometry: HepG2 stained with ARG44496 anti-HAUS3 antibody at 1 $\mu\text{g}/10^6$ cells dilution.



ARG44496 anti-HAUS3 antibody WB image

Western blot: Rat brain stained with ARG44496 anti-HAUS3 antibody at 0.5 $\mu\text{g}/\text{mL}$ dilution.



ARG44496 anti-HAUS3 antibody WB image

Western blot: Mouse brain stained with ARG44496 anti-HAUS3 antibody at 0.5 $\mu\text{g}/\text{mL}$ dilution.