

ARG44433 anti-LYPLA2 antibody

Package: 50 µg
Store at: -20°C

Summary

Product Description	Rabbit Polyclonal antibody recognizes LYPLA2
Tested Reactivity	Hu, Ms, Rat
Tested Application	FACS, ICC/IF, IHC-P, WB
Host	Rabbit
Clonality	Polyclonal
Isotype	IgG
Target Name	LYPLA2
Species	Human
Immunogen	Human LYPLA2 recombinant protein
Conjugation	Un-conjugated
Alternate Names	LYPLA2; Lysophospholipase 2; APT-2; Acyl-Protein Thioesterase 2; Lysophospholipase II; Palmitoyl-Protein Hydrolase; LysoPLA II; LPL-II; APT2; Testicular Tissue Protein Li 3

Application Instructions

Application table	Application	Dilution
	FACS	1-3 µg/1x10 ⁶ cells
	ICC/IF	5 µg/ml
	IHC-P	2-5 µg/ml
	WB	0.25-0.5 µg/ml
Application Note	The dilutions indicate recommended starting dilutions and the optimal dilutions or concentrations should be determined by the scientist.	

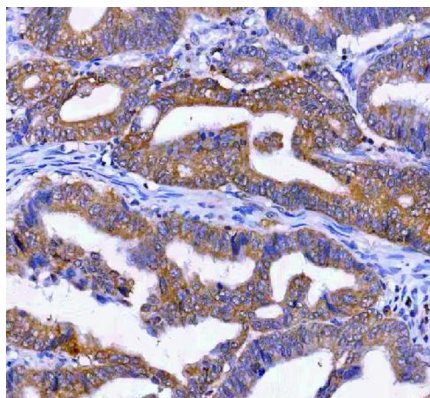
Properties

Form	Liquid
Purification	Affinity purified with Immunogen.
Buffer	0.9% NaCl, 0.2% Na ₂ HPO ₄ , 0.05% Sodium azide and 4% Trehalose.
Preservative	0.05% Sodium azide
Stabilizer	4% Trehalose
Concentration	0.5 mg/ml
Storage instruction	For continuous use, store undiluted antibody at 2-8°C for up to a week. For long-term storage, aliquot and store at -20°C or below. Storage in frost free freezers is not recommended. Avoid repeated freeze/thaw cycles. Suggest spin the vial prior to opening. The antibody solution should be gently mixed before use.

Bioinformation

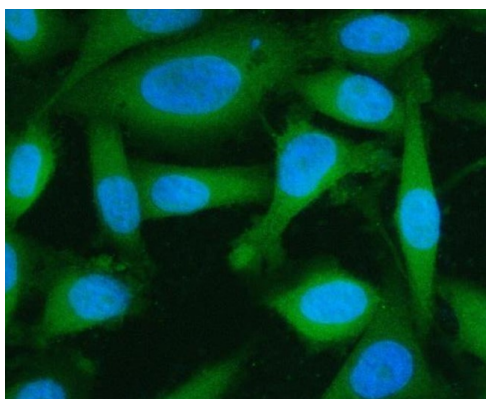
Gene Symbol	LYPLA2
Gene Full Name	Lysophospholipase 2
Background	Lysophospholipases are enzymes that act on biological membranes to regulate the multifunctional lysophospholipids. There are alternatively spliced transcript variants described for this gene but the full length nature is not known yet.
Function	Acts as a acyl-protein thioesterase hydrolyzing fatty acids from S-acylated cysteine residues in proteins such as trimeric G alpha proteins, GAP43, ZDHHC6 or HRAS
Calculated Mw	25 kDa
PTM	Lipoprotein, Palmitate, Phosphoprotein
Cellular Localization	Cytoplasm

Images



ARG44433 anti-LYPLA2 antibody IHC-P image

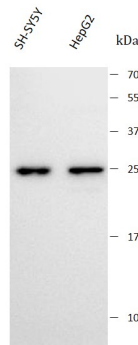
Immunohistochemistry: Human rectum adenocarcinoma stained with ARG44433 anti-LYPLA2 antibody at 2 µg/mL dilution.



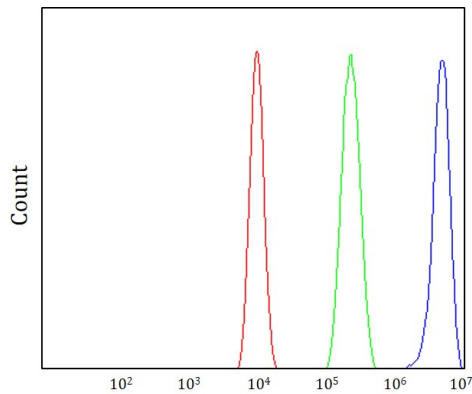
ARG44433 anti-LYPLA2 antibody ICC/IF image

Immunofluorescence: PC-3 stained with ARG44433 anti-LYPLA2 antibody at 5 µg/mL dilution.

ARG44433 anti-LYPLA2 antibody WB image

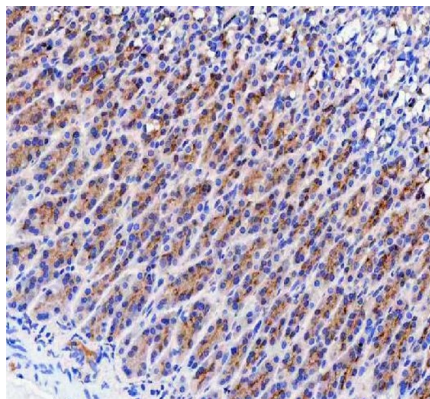


Western blot: SH-SY5Y and HepG2 stained with ARG44433 anti-LYPLA2 antibody at 0.5 $\mu\text{g/mL}$ dilution.



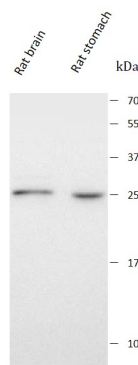
ARG44433 anti-LYPLA2 antibody FACS image

Flow Cytometry: HEL stained with ARG44433 anti-LYPLA2 antibody at 1 $\mu\text{g}/10^6$ cells dilution.



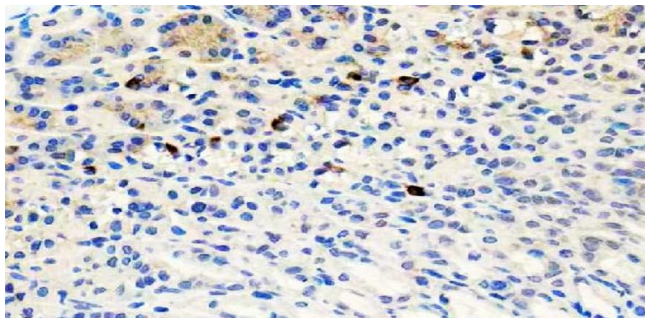
ARG44433 anti-LYPLA2 antibody IHC-P image

Immunohistochemistry: Rat stomach stained with ARG44433 anti-LYPLA2 antibody at 2 $\mu\text{g/mL}$ dilution.



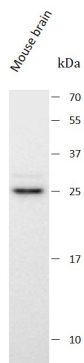
ARG44433 anti-LYPLA2 antibody WB image

Western blot: Rat brain and Rat stomach stained with ARG44433 anti-LYPLA2 antibody at 0.5 $\mu\text{g/mL}$ dilution.



ARG44433 anti-LYPLA2 antibody IHC-P image

Immunohistochemistry: Mouse stomach stained with ARG44433 anti-LYPLA2 antibody at 2 $\mu\text{g}/\text{mL}$ dilution.



ARG44433 anti-LYPLA2 antibody WB image

Western blot: Mouse brain stained with ARG44433 anti-LYPLA2 antibody at 0.5 $\mu\text{g}/\text{mL}$ dilution.