

## ARG44423 anti-LTB antibody

Package: 50 µg  
Store at: -20°C

### Summary

Product Description	Rabbit Polyclonal antibody recognizes LTB
Tested Reactivity	Ms, Rat
Tested Application	FACS, WB
Host	Rabbit
Clonality	Polyclonal
Isotype	IgG
Target Name	LTB
Species	Mouse
Immunogen	Mouse Ltb recombinant protein (aa. sequence: R68-G306).
Conjugation	Un-conjugated
Alternate Names	LTB; Lymphotoxin Beta; TNFSF3; TNFC; P33; Tumor Necrosis Factor Ligand Superfamily Member 3; TNF Superfamily Member 3; Necrosis Factor C; Lymphotoxin-Beta; LT-Beta; TNF-C

### Application Instructions

Application table	Application	Dilution
	FACS	1-3 µg/1x10 <sup>6</sup> cells
	WB	0.25-0.5 µg/ml
Application Note	The dilutions indicate recommended starting dilutions and the optimal dilutions or concentrations should be determined by the scientist.	

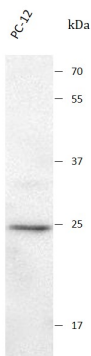
### Properties

Form	Liquid
Purification	Affinity purified with Immunogen.
Buffer	0.9% NaCl, 0.2% Na <sub>2</sub> HPO <sub>4</sub> , 0.05% Sodium azide and 4% Trehalose.
Preservative	0.05% Sodium azide
Stabilizer	4% Trehalose
Concentration	0.5 mg/ml
Storage instruction	For continuous use, store undiluted antibody at 2-8°C for up to a week. For long-term storage, aliquot and store at -20°C or below. Storage in frost free freezers is not recommended. Avoid repeated freeze/thaw cycles. Suggest spin the vial prior to opening. The antibody solution should be gently mixed before use.
Note	For laboratory research only, not for drug, diagnostic or other use.

Gene Symbol	LTB
Gene Full Name	Lymphotoxin Beta
Background	Lymphotoxin beta is a type II membrane protein of the TNF family. It anchors lymphotoxin-alpha to the cell surface through heterotrimer formation. The predominant form on the lymphocyte surface is the lymphotoxin-alpha 1/beta 2 complex (e.g. 1 molecule alpha/2 molecules beta) and this complex is the primary ligand for the lymphotoxin-beta receptor. The minor complex is lymphotoxin-alpha 2/beta 1. LTB is an inducer of the inflammatory response system and involved in normal development of lymphoid tissue. Lymphotoxin-beta isoform b is unable to complex with lymphotoxin-alpha suggesting a function for lymphotoxin-beta which is independent of lymphotoxin-alpha. Alternative splicing results in multiple transcript variants encoding different isoforms.
Function	Cytokine that binds to LTBR/TNFRSF3. May play a specific role in immune response regulation. Provides the membrane anchor for the attachment of the heterotrimeric complex to the cell surface. Isoform 2 is probably non-functional.
Calculated Mw	25 kDa
PTM	Glycoprotein
Cellular Localization	Membrane

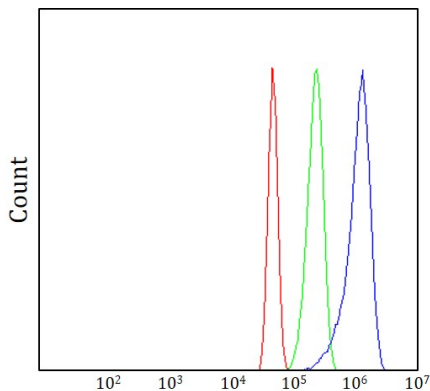
Images

ARG44423 anti-LTB antibody WB image



Western blot: PC-12 stained with ARG44423 anti-LTB antibody at 0.5 µg/mL dilution.

ARG44423 anti-LTB antibody FACS image



Flow Cytometry: RAW264.7 stained with ARG44423 anti-LTB antibody at 1 µg/10^6 cells dilution.