

## ARG44422 anti-LCMT2 antibody

Package: 50 µg  
Store at: -20°C

### Summary

Product Description	Rabbit Polyclonal antibody recognizes LCMT2
Tested Reactivity	Hu, Ms, Rat
Tested Application	ICC/IF, WB
Host	Rabbit
Clonality	Polyclonal
Isotype	IgG
Target Name	LCMT2
Species	Human
Immunogen	Human LCMT2 recombinant protein (aa. sequence: A29-N595).
Conjugation	Un-conjugated
Alternate Names	LCMT2; Leucine Carboxyl Methyltransferase 2; TYW4; KIAA0547; PPM2; TRNA(Phe) (7-(3-Amino-3-(Methoxycarbonyl)Propyl)Wyosine(37)-N)-Methoxycarbonyltransferase; TRNA(Phe) (7-(3-Amino-3-Carboxypropyl)Wyosine(37)-O)-Methyltransferase

### Application Instructions

Application table	Application	Dilution
	ICC/IF	5 µg/ml
	WB	0.1-0.25 µg/ml
Application Note	The dilutions indicate recommended starting dilutions and the optimal dilutions or concentrations should be determined by the scientist.	

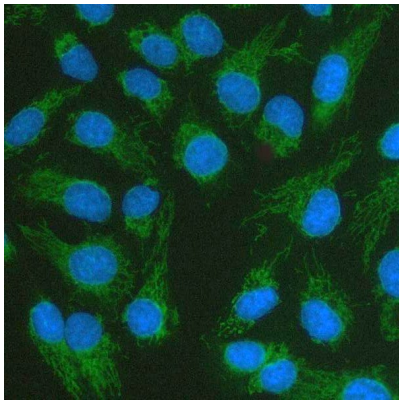
### Properties

Form	Liquid
Purification	Affinity purified with Immunogen.
Buffer	0.9% NaCl, 0.2% Na <sub>2</sub> HPO <sub>4</sub> , 0.05% Sodium azide and 4% Trehalose.
Preservative	0.05% Sodium azide
Stabilizer	4% Trehalose
Concentration	0.5 mg/ml
Storage instruction	For continuous use, store undiluted antibody at 2-8°C for up to a week. For long-term storage, aliquot and store at -20°C or below. Storage in frost free freezers is not recommended. Avoid repeated freeze/thaw cycles. Suggest spin the vial prior to opening. The antibody solution should be gently mixed before use.
Note	For laboratory research only, not for drug, diagnostic or other use.

Bioinformation

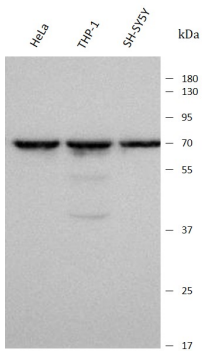
Gene Symbol	LCMT2
Gene Full Name	Leucine Carboxyl Methyltransferase 2
Background	The protein encoded by this intronless gene belongs to the highly variable methyltransferase superfamily. This gene is the inferred homolog of the <i>Saccharomyces cerevisiae</i> carboxymethyltransferase gene PPM2 that is essential for the synthesis of the hypermodified guanosine Wybutosine (yW).
Function	Probable S-adenosyl-L-methionine-dependent methyltransferase that acts as a component of the wybutosine biosynthesis pathway. Wybutosine is a hyper modified guanosine with a tricyclic base found at the 3'-position adjacent to the anticodon of eukaryotic phenylalanine tRNA.
Calculated Mw	76 kDa

Images



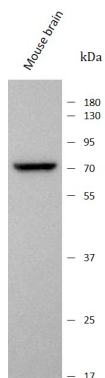
ARG44422 anti-LCMT2 antibody ICC/IF image

Immunofluorescence: U2OS stained with ARG44422 anti-LCMT2 antibody at 5 µg/mL dilution.



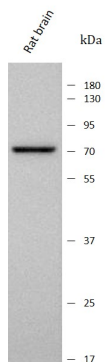
ARG44422 anti-LCMT2 antibody WB image

Western blot: HeLa, THP-1 and SH-SY5Y stained with ARG44422 anti-LCMT2 antibody at 0.5 µg/mL dilution.



ARG44422 anti-LCMT2 antibody WB image

Western blot: Mouse brain stained with ARG44422 anti-LCMT2 antibody at 0.5  $\mu\text{g}/\text{mL}$  dilution.



ARG44422 anti-LCMT2 antibody WB image

Western blot: Rat brain stained with ARG44422 anti-LCMT2 antibody at 0.5  $\mu\text{g}/\text{mL}$  dilution.