

ARG44421 anti-LDHD antibody

Package: 50 µg
Store at: -20°C

Summary

Product Description	Rabbit Polyclonal antibody recognizes LDHD
Tested Reactivity	Hu, Ms, Rat
Tested Application	FACS, WB
Host	Rabbit
Clonality	Polyclonal
Isotype	IgG
Target Name	LDHD
Species	Human
Immunogen	Human LDHD recombinant protein (aa. sequence: R56-Q498).
Conjugation	Un-conjugated
Alternate Names	LDHD; Lactate Dehydrogenase D; Probable D-Lactate Dehydrogenase, Mitochondrial; D-Lactate Dehydrogenase

Application Instructions

Application table	Application	Dilution
	FACS	1-3 µg/1x10 ⁶ cells
	WB	0.25-0.5 µg/ml
Application Note	The dilutions indicate recommended starting dilutions and the optimal dilutions or concentrations should be determined by the scientist.	

Properties

Form	Liquid
Purification	Affinity purified with Immunogen.
Buffer	0.9% NaCl, 0.2% Na ₂ HPO ₄ , 0.05% Sodium azide and 4% Trehalose.
Preservative	0.05% Sodium azide
Stabilizer	4% Trehalose
Concentration	0.5 mg/ml
Storage instruction	For continuous use, store undiluted antibody at 2-8°C for up to a week. For long-term storage, aliquot and store at -20°C or below. Storage in frost free freezers is not recommended. Avoid repeated freeze/thaw cycles. Suggest spin the vial prior to opening. The antibody solution should be gently mixed before use.
Note	For laboratory research only, not for drug, diagnostic or other use.

Bioinformation

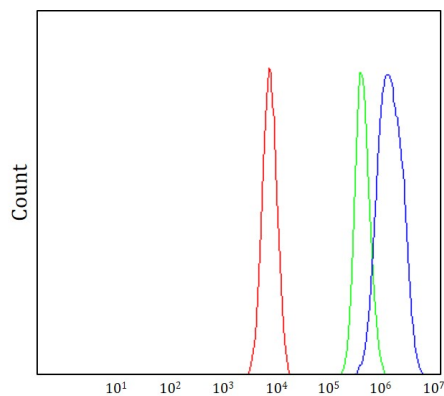
Gene Symbol	LDHD
Gene Full Name	Lactate Dehydrogenase D
Background	The protein encoded by this gene belongs to the D-isomer specific 2-hydroxyacid dehydrogenase family. The similar protein in yeast has both D-lactate and D-glycerate dehydrogenase activities. Alternative splicing occurs at this locus and two transcript variants encoding distinct isoforms have been identified.
Function	Involved in D-lactate, but not L-lactate catabolic process.
Calculated Mw	55 kDa
PTM	Acetylation
Cellular Localization	Mitochondrion

Images



ARG44421 anti-LDHD antibody WB image

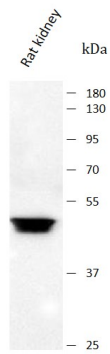
Western blot: Human hepatocellular carcinoma paracancerous stained with ARG44421 anti-LDHD antibody at 0.5 µg/mL dilution.



ARG44421 anti-LDHD antibody FACS image

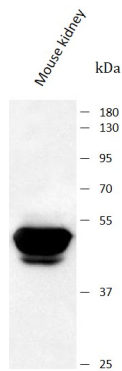
Flow Cytometry: K562 stained with ARG44421 anti-LDHD antibody at 1 µg/10⁶ cells dilution.

ARG44421 anti-LDHD antibody WB image



Western blot: Rat kidney stained with ARG44421 anti-LDHD antibody at 0.5 $\mu\text{g}/\text{mL}$ dilution.

ARG44421 anti-LDHD antibody WB image



Western blot: Mouse kidney stained with ARG44421 anti-LDHD antibody at 0.5 $\mu\text{g}/\text{mL}$ dilution.