

## ARG44415 anti-LRRC59 antibody

Package: 50 µg  
Store at: -20°C

### Summary

Product Description	Rabbit Polyclonal antibody recognizes LRRC59
Tested Reactivity	Hu, Ms, Rat
Tested Application	FACS, ICC/IF, IHC-P, WB
Host	Rabbit
Clonality	Polyclonal
Isotype	IgG
Target Name	LRRC59
Species	Human
Immunogen	Human LRRC59 recombinant protein (aa. sequence: L20-Q307).
Conjugation	Un-conjugated
Alternate Names	LRRC59; Leucine Rich Repeat Containing 59

### Application Instructions

Application table	Application	Dilution
	FACS	1-3 µg/1x10 <sup>6</sup> cells
	ICC/IF	5 µg/ml
	IHC-P	2-5 µg/ml
	WB	0.1-0.25 µg/ml
Application Note	The dilutions indicate recommended starting dilutions and the optimal dilutions or concentrations should be determined by the scientist.	

### Properties

Form	Liquid
Purification	Affinity purified with Immunogen.
Buffer	0.9% NaCl, 0.2% Na <sub>2</sub> HPO <sub>4</sub> , 0.05% Sodium azide and 4% Trehalose.
Preservative	0.05% Sodium azide
Stabilizer	4% Trehalose
Concentration	0.5 mg/ml
Storage instruction	For continuous use, store undiluted antibody at 2-8°C for up to a week. For long-term storage, aliquot and store at -20°C or below. Storage in frost free freezers is not recommended. Avoid repeated freeze/thaw cycles. Suggest spin the vial prior to opening. The antibody solution should be gently mixed before use.

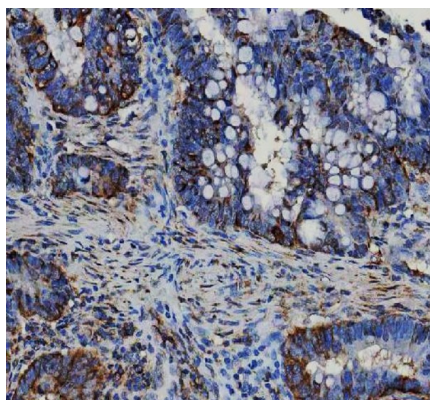
**Note**

For laboratory research only, not for drug, diagnostic or other use.

## Bioinformation

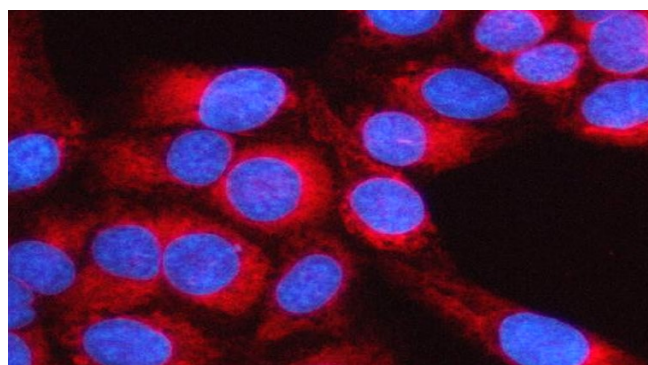
Gene Symbol	LRRC59
Gene Full Name	Leucine Rich Repeat Containing 59
Background	Enables RNA binding activity and cadherin binding activity. Predicted to be involved in positive regulation of Ras protein signal transduction and signal transduction. Located in endoplasmic reticulum and mitochondrial nucleoid.
Function	Required for nuclear import of FGF1, but not that of FGF2. Might regulate nuclear import of exogenous FGF1 by facilitating interaction with the nuclear import machinery and by transporting cytosolic FGF1 to, and possibly through, the nuclear pores.
Calculated Mw	35 kDa
PTM	Acetylation, Phosphoprotein
Cellular Localization	Endoplasmic reticulum, Membrane, Microsome, Nucleus

## Images



ARG44415 anti-LRRC59 antibody IHC-P image

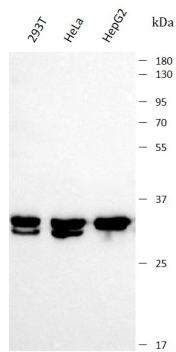
Immunohistochemistry: Human colorectal adenocarcinoma stained with ARG44415 anti-LRRC59 antibody at 2 µg/mL dilution.



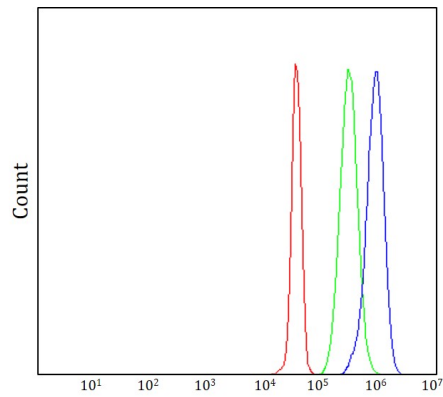
ARG44415 anti-LRRC59 antibody ICC/IF image

Immunofluorescence: U2OS stained with ARG44415 anti-LRRC59 antibody at 5 µg/mL dilution.

#### ARG44415 anti-LRRC59 antibody WB image

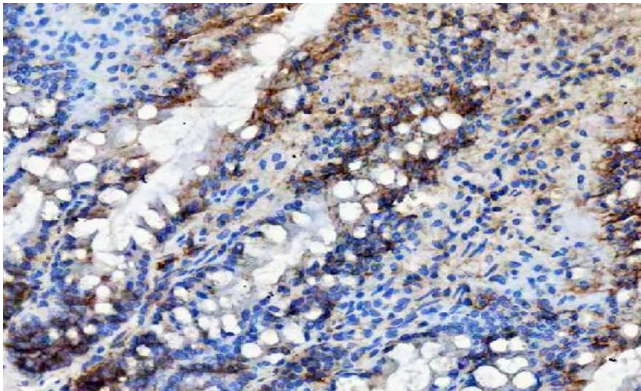


Western blot: 293T , HeLa and HepG2 stained with ARG44415 anti-LRRC59 antibody at 0.5  $\mu\text{g}/\text{mL}$  dilution.



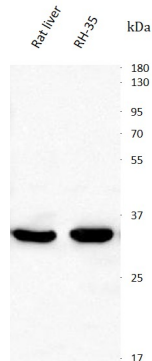
#### ARG44415 anti-LRRC59 antibody FACS image

Flow Cytometry: JK stained with ARG44415 anti-LRRC59 antibody at 1  $\mu\text{g}/10^6$  cells dilution.



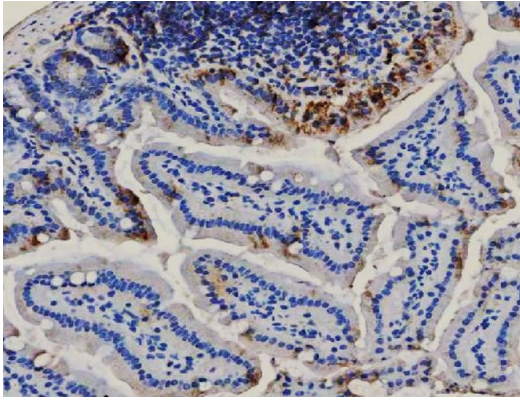
#### ARG44415 anti-LRRC59 antibody IHC-P image

Immunohistochemistry: Rat colon stained with ARG44415 anti-LRRC59 antibody at 2  $\mu\text{g}/\text{mL}$  dilution.



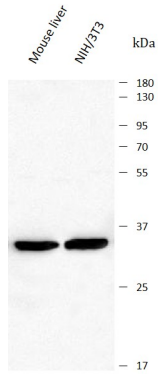
#### ARG44415 anti-LRRC59 antibody WB image

Western blot: Rat liver and RH-35 stained with ARG44415 anti-LRRC59 antibody at 0.5  $\mu\text{g}/\text{mL}$  dilution.



ARG44415 anti-LRRC59 antibody IHC-P image

Immunohistochemistry: Mouse colon stained with ARG44415 anti-LRRC59 antibody at 2  $\mu\text{g}/\text{mL}$  dilution.



ARG44415 anti-LRRC59 antibody WB image

Western blot: Mouse liver and NIH/3T3 stained with ARG44415 anti-LRRC59 antibody at 0.5  $\mu\text{g}/\text{mL}$  dilution.