

ARG44397 anti-LAD1 antibody

Package: 50 µg
Store at: -20°C

Summary

Product Description	Rabbit Polyclonal antibody recognizes LAD1
Tested Reactivity	Hu
Tested Application	FACS, ICC/IF, WB
Host	Rabbit
Clonality	Polyclonal
Isotype	IgG
Target Name	LAD1
Species	Human
Immunogen	Human LAD1 recombinant protein (aa. sequence: E60-Q483).
Conjugation	Un-conjugated
Alternate Names	LAD1; Ladinin 1; Ladinin-1; Lad-1; Linear IgA Bullous Dermatitis Antigen; Linear IgA Disease Antigen Homolog; Linear IgA Disease Antigen; LadA; LAD

Application Instructions

Application table	Application	Dilution
	FACS	1-3 µg/1x10 ⁶ cells
	ICC/IF	5 µg/ml
	WB	0.25-0.5 µg/ml
Application Note	The dilutions indicate recommended starting dilutions and the optimal dilutions or concentrations should be determined by the scientist.	

Properties

Form	Liquid
Purification	Affinity purified with Immunogen.
Buffer	0.9% NaCl, 0.2% Na ₂ HPO ₄ , 0.05% Sodium azide and 4% Trehalose.
Preservative	0.05% Sodium azide
Stabilizer	4% Trehalose
Concentration	0.5 mg/ml
Storage instruction	For continuous use, store undiluted antibody at 2-8°C for up to a week. For long-term storage, aliquot and store at -20°C or below. Storage in frost free freezers is not recommended. Avoid repeated freeze/thaw cycles. Suggest spin the vial prior to opening. The antibody solution should be gently mixed before use.

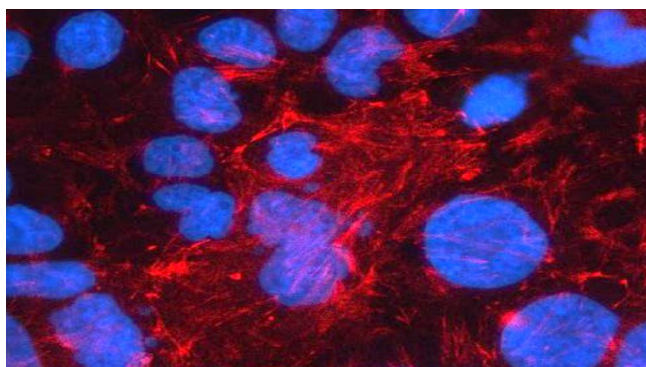
Note

For laboratory research only, not for drug, diagnostic or other use.

Bioinformation

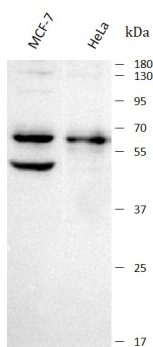
Gene Symbol	LAD1
Gene Full Name	Ladinin 1
Background	The protein encoded by this gene may be an anchoring filament that is a component of basement membranes. It may contribute to the stability of the association of the epithelial layers with the underlying mesenchyme.
Function	Anchoring filament protein which is a component of the basement membrane zone.
Calculated Mw	57 kDa
PTM	Methylation, Phosphoprotein
Cellular Localization	Basement membrane, Extracellular matrix, Secreted

Images



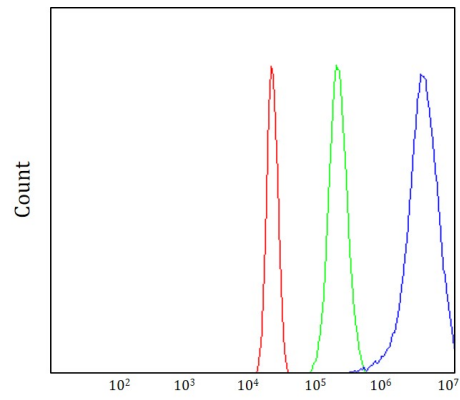
ARG44397 anti-LAD1 antibody ICC/IF image

Immunofluorescence: Caco-2 stained with ARG44397 anti-LAD1 antibody at 5 µg/mL dilution.



ARG44397 anti-LAD1 antibody WB image

Western blot: MCF-7 and HeLa stained with ARG44397 anti-LAD1 antibody at 0.5 µg/mL dilution.



ARG44397 anti-LAD1 antibody FACS image

Flow Cytometry: HepG2 stained with ARG44397 anti-LAD1 antibody at $1 \mu\text{g}/10^6$ cells dilution.