

ARG44286 anti-Semaphorin 3F antibody

Package: 100 µl
Store at: -20°C

Summary

Product Description	Rabbit Polyclonal antibody recognizes Semaphorin 3F
Tested Reactivity	Hu, Ms, Rat
Tested Application	WB
Host	Rabbit
Clonality	Polyclonal
Isotype	IgG
Target Name	Semaphorin 3F
Species	Human
Immunogen	Semaphorin 3F synthetic peptide
Conjugation	Un-conjugated
Alternate Names	SEMA3F; Semaphorin 3F; SEMAK; Sema Domain, Immunoglobulin Domain (Ig), Short Basic Domain, Secreted, (Semaphorin) 3F; Semaphorin-3F; Semaphorin IV; Sema IV; SEMA4

Application Instructions

Application table	Application	Dilution
	WB	1:1000
Application Note	* The dilutions indicate recommended starting dilutions and the optimal dilutions or concentrations should be determined by the scientist.	

Properties

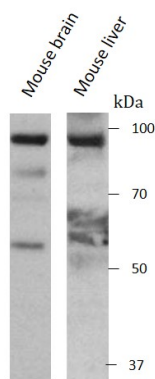
Form	Liquid
Purification	Antigen Affinity Purified
Buffer	PBS with 1 mg/ml BSA, 0.05% Sodium azide and 50% glycerol
Preservative	0.05% Sodium azide
Stabilizer	1 mg/ml BSA and 50% glycerol
Storage instruction	For continuous use, store undiluted antibody at 2-8°C for up to a week. For long-term storage, aliquot and store at -20°C. Storage in frost free freezers is not recommended. Avoid repeated freeze/thaw cycles. Suggest spin the vial prior to opening. The antibody solution should be gently mixed before use.
Note	For laboratory research only, not for drug, diagnostic or other use.

Bioinformation

Gene Symbol	SEMA3F
-------------	--------

Gene Full Name	Semaphorin 3F
Background	This gene encodes a member of the semaphorin III family of secreted signaling proteins that are involved in axon guidance during neuronal development. The encoded protein contains an N-terminal Sema domain, an immunoglobulin loop and a C-terminal basic domain. This gene is expressed by the endothelial cells where it was found to act in an autocrine fashion to induce apoptosis, inhibit cell proliferation and survival, and function as an anti-tumorigenic agent. Alternative splicing results in multiple transcript variants encoding different isoforms.
Function	May play a role in cell motility and cell adhesion.
Calculated Mw	88 kDa
PTM	Disulfide bond, Glycoprotein
Cellular Localization	Secreted

Images



ARG44286 anti-Semaphorin 3F antibody WB image

Western blot: Mouse brain and liver stained with ARG44286 anti-Semaphorin 3F antibody.