

ARG44285 anti-SCAI antibody

Package: 100 µl
Store at: -20°C

Summary

Product Description	Rabbit Polyclonal antibody recognizes SCAI
Tested Reactivity	Hu, Ms, Rat, Chk
Tested Application	WB
Host	Rabbit
Clonality	Polyclonal
Isotype	IgG
Target Name	SCAI
Species	Mouse
Immunogen	SCAI synthetic peptide
Conjugation	Un-conjugated
Alternate Names	SCAI; Suppressor Of Cancer Cell Invasion; NET40; Suppressor Of Cancer Cell Invasion Protein; Protein SCAI; FLJ36664; C9orf126; Chromosome 9 Open Reading Frame 126; C9ORF126

Application Instructions

Application table	Application	Dilution
	WB	1:1000
Application Note	* The dilutions indicate recommended starting dilutions and the optimal dilutions or concentrations should be determined by the scientist.	

Properties

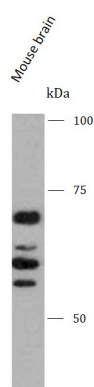
Form	Liquid
Purification	Antigen Affinity Purified
Buffer	PBS with 1 mg/ml BSA, 0.05% Sodium azide and 50% glycerol
Preservative	0.05% Sodium azide
Stabilizer	1 mg/ml BSA and 50% glycerol
Storage instruction	For continuous use, store undiluted antibody at 2-8°C for up to a week. For long-term storage, aliquot and store at -20°C. Storage in frost free freezers is not recommended. Avoid repeated freeze/thaw cycles. Suggest spin the vial prior to opening. The antibody solution should be gently mixed before use.
Note	For laboratory research only, not for drug, diagnostic or other use.

Bioinformation

Gene Symbol	SCAI
-------------	------

Gene Full Name	Suppressor Of Cancer Cell Invasion
Background	This gene encodes a regulator of cell migration. The encoded protein appears to function in the RhoA (ras homolog gene family, member A)-Dia1 (diaphanous homolog 1) signal transduction pathway. Alternatively spliced transcript variants have been described.
Function	Tumor suppressor which functions to suppress MRTFA-induced SRF transcriptional activity. May function in the RHOA-DIAPH1 signal transduction pathway and regulate cell migration through transcriptional regulation of ITGB1.
Calculated Mw	70 kDa
PTM	Phosphoprotein
Cellular Localization	Cytoplasm, Membrane, Nucleus

Images



ARG44285 anti-SCAI antibody WB image

Western blot: Mouse brain stained with ARG44285 anti-SCAI antibody.
