

ARG44244 anti-CD154 / CD40L antibody [24-31] (APC)

Package: 100 tests
Store at: 4°C

Summary

Product Description	APC-conjugated Mouse Monoclonal antibody [24-31] recognizes CD154 / CD40L
Tested Reactivity	Hu, NHuPrm
Tested Application	FACS
Host	Mouse
Clonality	Monoclonal
Clone	24-31
Isotype	IgG1
Target Name	CD154 / CD40L
Species	Human
Immunogen	Human CD154 fusion protein.
Conjugation	APC
Alternate Names	TNFSF5; IMD3; T-cell antigen Gp39; HIGM1; CD40-L; gp39; CD40 ligand; Tumor necrosis factor ligand superfamily member 5; CD40L; CD154; TRAP; CD antigen CD154; hCD40L; IGM; T-BAM; TNF-related activation protein

Application Instructions

Application table	Application	Dilution
	FACS	10 µl / 10 ⁶ cells
Application Note	* The dilutions indicate recommended starting dilutions and the optimal dilutions or concentrations should be determined by the scientist.	

Properties

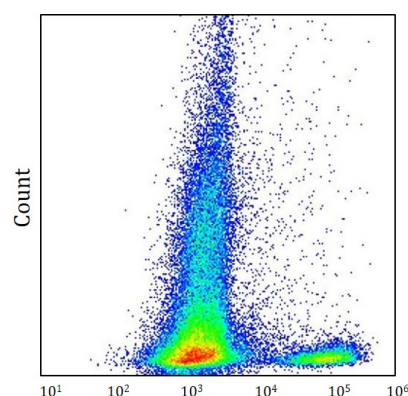
Form	Liquid
Purification	Purified
Buffer	PBS (pH 7.4) and 15 mM Sodium azide.
Preservative	15 mM Sodium azide
Storage instruction	Aliquot and store in the dark at 4°C. Keep protected from prolonged exposure to light. Do not freeze. Suggest spin the vial prior to opening. The antibody solution should be gently mixed before use.
Note	For laboratory research only, not for drug, diagnostic or other use.

Bioinformation

Gene Symbol	CD40LG
-------------	--------

Gene Full Name	CD40 ligand
Background	The protein encoded by this gene is expressed on the surface of T cells. It regulates B cell function by engaging CD40 on the B cell surface. A defect in this gene results in an inability to undergo immunoglobulin class switch and is associated with hyper-IgM syndrome. [provided by RefSeq, Jul 2008]
Function	Mediates B-cell proliferation in the absence of co-stimulus as well as IgE production in the presence of IL-4. Involved in immunoglobulin class switching. Release of soluble CD40L from platelets is partially regulated by GP IIb/IIIa, actin polymerization, and an matrix metalloproteinases (MMP) inhibitor-sensitive pathway. [UniProt]
PTM	The soluble form derives from the membrane form by proteolytic processing. N-linked glycan is a mixture of high mannose and complex type. Glycan structure does not influence binding affinity to CD40. Not O-glycosylated. [UniProt]
Cellular Localization	Cell membrane; Single-pass type II membrane protein. Cell surface. CD40 ligand, soluble form: Secreted. [UniProt]

Images



ARG44244 anti-CD154 / CD40L antibody [24-31] (APC) FACS image

Flow Cytometry: Human whole blood stained with ARG44244 anti-CD154 / CD40L antibody [24-31] (APC) at 10 µl / 100 µl whole blood dilution.