

ARG44221 anti-MSLNL antibody

Package: 50 µg
Store at: -20°C

Summary

Product Description	Rabbit Polyclonal antibody recognizes MSLNL
Tested Reactivity	Hu, Ms, Rat
Tested Application	FACS, ICC/IF, IHC-P, WB
Host	Rabbit
Clonality	Polyclonal
Isotype	IgG
Target Name	MSLNL
Species	Human
Immunogen	Recombinant protein of Human MSLNL
Conjugation	Un-conjugated
Alternate Names	MSLNL; Mesothelin Like; MPFL; Pre-Pro-Megakaryocyte-Potentiating-Factor-Like; C16orf37; Chromosome 16 Open Reading Frame 37; Mesothelin-Like Protein; MPF-Like; C16ORF37

Application Instructions

Application table	Application	Dilution
	FACS	1-3 µg/1x10 ⁶ cells
	ICC/IF	5 µg/ml
	IHC-P	2-5 µg/ml
	WB	0.1-0.25 µg/ml
	* The dilutions indicate recommended starting dilutions and the optimal dilutions or concentrations should be determined by the scientist.	

Properties

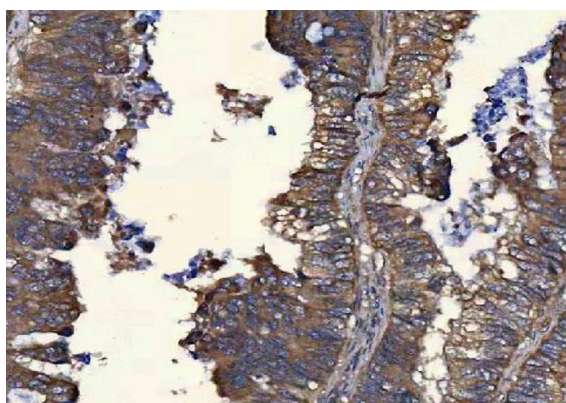
Form	Liquid
Purification	Affinity purification with immunogen.
Buffer	0.9% NaCl, 0.2% Na ₂ HPO ₄ , 0.05% Sodium azide and 5% BSA.
Preservative	0.05% Sodium azide
Stabilizer	5% BSA
Concentration	0.5 mg/ml
Storage instruction	For continuous use, store undiluted antibody at 2-8°C for up to a week. For long-term storage, aliquot and store at -20°C or below. Storage in frost free freezers is not recommended. Avoid repeated freeze/thaw cycles. Suggest spin the vial prior to opening. The antibody solution should be gently mixed before use.

Note For laboratory research only, not for drug, diagnostic or other use.

Bioinformation

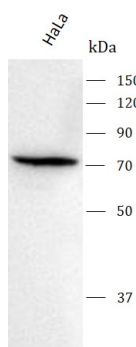
Gene Symbol	MSLNL
Gene Full Name	Mesothelin Like
Background	Predicted to be involved in cell-matrix adhesion. Predicted to be located in membrane. Predicted to be integral component of membrane. Predicted to be active in cell surface.
Function	May play a role in cellular adhesion.
Calculated Mw	70 kDa
PTM	Glycoprotein
Cellular Localization	Membrane

Images



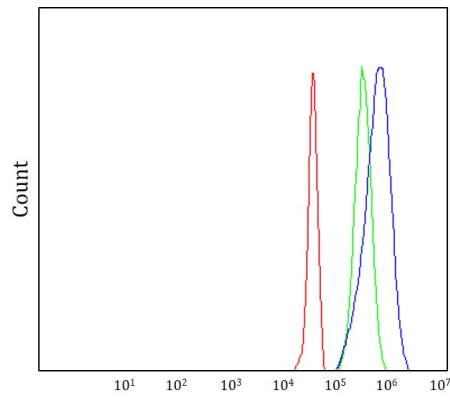
ARG44221 anti-MSLNL antibody IHC-P image

Immunohistochemistry: Human colorectal adenocarcinoma stained with ARG44221 anti-MSLNL antibody at 2 µg/mL dilution.



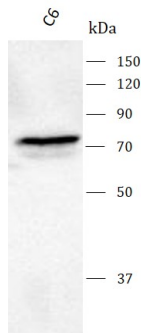
ARG44221 anti-MSLNL antibody WB image

Western blot: HeLa stained with ARG44221 anti-MSLNL antibody at 0.5 µg/mL dilution.



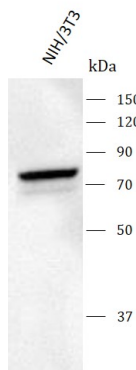
ARG44221 anti-MSLNL antibody FACS image

Flow Cytometry: JK stained with ARG44221 anti-MSLNL antibody at $1\text{ }\mu\text{g}/1 \times 10^6$ cells dilution.



ARG44221 anti-MSLNL antibody WB image

Western blot: C6 stained with ARG44221 anti-MSLNL antibody at $0.5\text{ }\mu\text{g}/\text{mL}$ dilution.



ARG44221 anti-MSLNL antibody WB image

Western blot: NIH/3T3 stained with ARG44221 anti-MSLNL antibody at $0.5\text{ }\mu\text{g}/\text{mL}$ dilution.