

ARG44220 anti-Malectin antibody

Package: 50 µg
Store at: -20°C

Summary

Product Description	Rabbit Polyclonal antibody recognizes Malectin
Tested Reactivity	Hu, Ms, Rat
Tested Application	FACS, IHC-P, WB
Host	Rabbit
Clonality	Polyclonal
Isotype	IgG
Target Name	Malectin
Species	Human
Immunogen	Recombinant protein of Human Malectin
Conjugation	Un-conjugated
Alternate Names	MLEC; Malectin; KIAA0152; Oligosaccharyltransferase Complex Subunit (Non-Catalytic)

Application Instructions

Application table	Application	Dilution
	FACS	1-3 µg/1x10 ⁶ cells
	IHC-P	2-5 µg/ml
	WB	0.25-0.5 µg/ml
Application Note	* The dilutions indicate recommended starting dilutions and the optimal dilutions or concentrations should be determined by the scientist.	

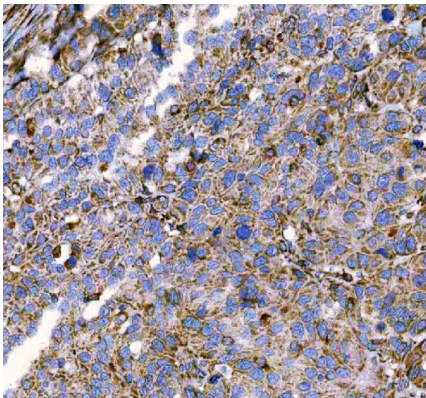
Properties

Form	Liquid
Purification	Affinity purification with immunogen.
Buffer	0.9% NaCl, 0.2% Na ₂ HPO ₄ , 0.05% Sodium azide and 5% BSA.
Preservative	0.05% Sodium azide
Stabilizer	5% BSA
Concentration	0.5 mg/ml
Storage instruction	For continuous use, store undiluted antibody at 2-8°C for up to a week. For long-term storage, aliquot and store at -20°C or below. Storage in frost free freezers is not recommended. Avoid repeated freeze/thaw cycles. Suggest spin the vial prior to opening. The antibody solution should be gently mixed before use.
Note	For laboratory research only, not for drug, diagnostic or other use.

Bioinformation

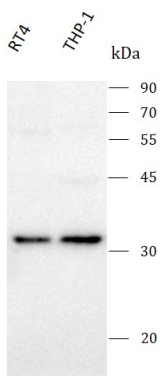
Gene Symbol	MLEC
Gene Full Name	Malectin
Background	This gene encodes the carbohydrate-binding protein malectin which is a Type I membrane-anchored endoplasmic reticulum protein. This protein has an affinity for Glc2Man9GlcNAc2 (G2M9) N-glycans and is involved in regulating glycosylation in the endoplasmic reticulum. This protein has also been shown to interact with ribophorin I and may be involved in the directing the degradation of misfolded proteins. Alternate splicing results in multiple transcript variants.
Function	Carbohydrate-binding protein with a strong ligand preference for Glc2-N-glycan. May play a role in the early steps of protein N-glycosylation.
Calculated Mw	32 kDa
PTM	Glycoprotein
Cellular Localization	Endoplasmic reticulum, Membrane

Images



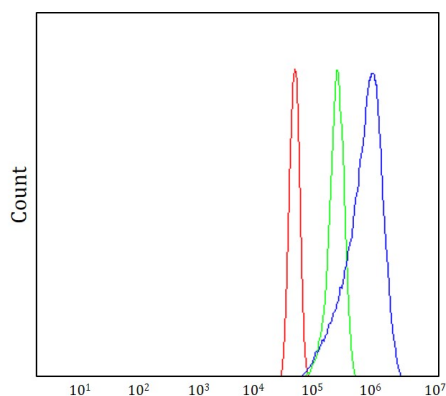
ARG44220 anti-Malectin antibody IHC-P image

Immunohistochemistry: Human bladder urothelial carcinoma stained with ARG44220 anti-Malectin antibody at 2 µg/mL dilution.



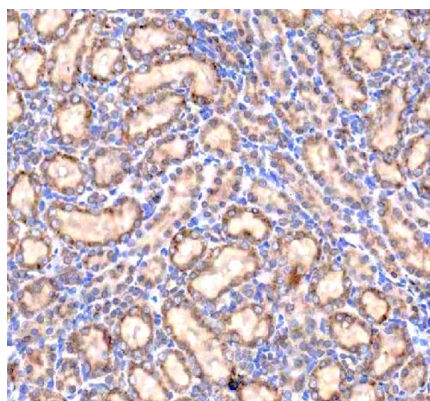
ARG44220 anti-Malectin antibody WB image

Western blot: RT4 and THP-1 stained with ARG44220 anti-Malectin antibody at 0.5 µg/mL dilution.



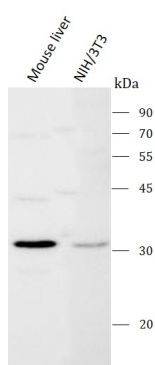
ARG44220 anti-Malectin antibody FACS image

Flow Cytometry: SiHa stained with ARG44220 anti-Malectin antibody at $1\text{ }\mu\text{g}/1\times 10^6$ cells dilution.



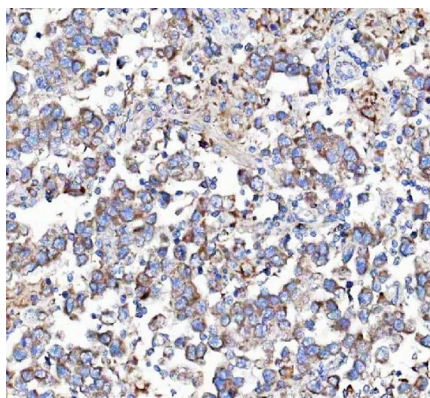
ARG44220 anti-Malectin antibody IHC-P image

Immunohistochemistry: Rat kidney stained with ARG44220 anti-Malectin antibody at $2\text{ }\mu\text{g}/\text{mL}$ dilution.



ARG44220 anti-Malectin antibody WB image

Western blot: Mouse liver and NIH/3T3 stained with ARG44220 anti-Malectin antibody at $0.5\text{ }\mu\text{g}/\text{mL}$ dilution.



ARG44220 anti-Malectin antibody IHC-P image

Immunohistochemistry: Human testicular germ cell tumors stained with ARG44220 anti-Malectin antibody at $2\text{ }\mu\text{g}/\text{mL}$ dilution.