

ARG44213 anti-LHX6 antibody

Package: 50 µg
Store at: -20°C

Summary

Product Description	Rabbit Polyclonal antibody recognizes LHX6
Tested Reactivity	Hu
Tested Application	ICC/IF, IHC-P, WB
Host	Rabbit
Clonality	Polyclonal
Isotype	IgG
Target Name	LHX6
Species	Human
Immunogen	Recombinant protein of Human LHX6
Conjugation	Un-conjugated
Alternate Names	LHX6; LIM Homeobox 6; LHX6.1; HLHX6; LIM/Homeobox Protein Lhx6.1; LIM/Homeobox Protein Lhx6; LIM Homeodomain Protein 6.1; LIM Homeobox Protein 6

Application Instructions

Application table	Application	Dilution
	ICC/IF	5 µg/ml
	IHC-P	2-5 µg/ml
	WB	0.25-0.5 µg/ml
Application Note	* The dilutions indicate recommended starting dilutions and the optimal dilutions or concentrations should be determined by the scientist.	

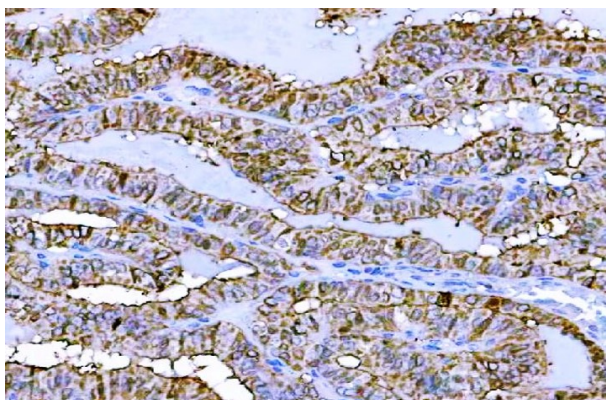
Properties

Form	Liquid
Purification	Affinity purification with immunogen.
Buffer	0.9% NaCl, 0.2% Na ₂ HPO ₄ , 0.05% Sodium azide and 5% BSA.
Preservative	0.05% Sodium azide
Stabilizer	5% BSA
Concentration	0.5 mg/ml
Storage instruction	For continuous use, store undiluted antibody at 2-8°C for up to a week. For long-term storage, aliquot and store at -20°C or below. Storage in frost free freezers is not recommended. Avoid repeated freeze/thaw cycles. Suggest spin the vial prior to opening. The antibody solution should be gently mixed before use.

Bioinformation

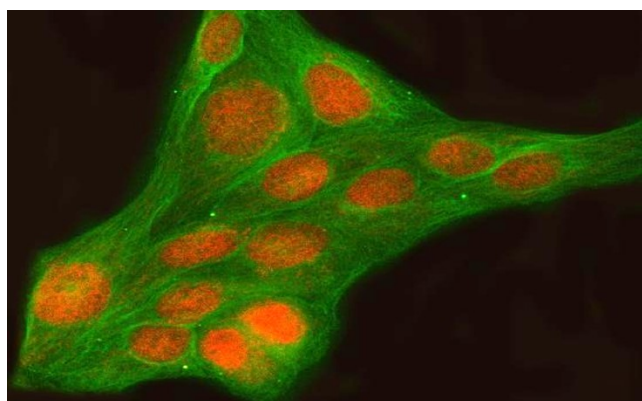
Gene Symbol	LHX6
Gene Full Name	Lim Homeobox 6
Background	This gene encodes a member of a large protein family that contains the LIM domain, a unique cysteine-rich zinc-binding domain. The encoded protein has tandem LIM domains as well as a DNA-binding homeodomain. The protein functions as a transcription factor involved in embryogenesis and head development and is highly expressed in neural crest derived mesenchyme cells. Alternative splicing results in multiple transcript variants encoding distinct isoforms.
Function	Probable transcription factor required for the expression of a subset of genes involved in interneurons migration and development. Functions in the specification of cortical interneuron subtypes and in the migration of GABAergic interneuron precursors from the subpallium to the cerebral cortex.
Calculated Mw	40 kDa
Cellular Localization	Nucleus

Images



ARG44213 anti-LHX6 antibody IHC-P image

Immunohistochemistry: Human thyroid cancer stained with ARG44213 anti-LHX6 antibody at 2 µg/mL dilution.



ARG44213 anti-LHX6 antibody ICC/IF image

Immunofluorescence: U2OS stained with ARG44213 anti-LHX6 antibody at 5 µg/mL dilution.

ARG44213 anti-LHX6 antibody WB image

Western blot: HeLa, 293T, HepG2 and Caco-2 stained with ARG44213 anti-LHX6 antibody at 0.5 $\mu\text{g}/\text{mL}$ dilution.

