

ARG44204 anti-MMS19 antibody

Package: 50 µg
Store at: -20°C

Summary

Product Description	Rabbit Polyclonal antibody recognizes MMS19
Tested Reactivity	Hu, Ms
Tested Application	FACS, ICC/IF, IHC-P, WB
Host	Rabbit
Clonality	Polyclonal
Isotype	IgG
Target Name	MMS19
Species	Human
Immunogen	Recombinant protein of Human MMS19
Conjugation	Un-conjugated
Alternate Names	MMS19; MMS19 Homolog, Cytosolic Iron-Sulfur Assembly Component; HMMS19; MMS19L; MET18; CIAO4; MMS19 Nucleotide Excision Repair Protein Homolog; MMS19-Like Protein; MET18 Homolog; MMS19 Nucleotide Excision Repair Homolog (S. Cerevisiae); MMS19 Cytosolic Iron-Sulfur Assembly Component; MMS19-Like (MET18 Homolog, S. Cerevisiae); MMS19 Nucleotide Excision Repair Homolog; MET18 Homolog (S. Cerevisiae); Homolog Of Yeast MMS19

Application Instructions

Application table	Application	Dilution
	FACS	1-3 µg/1x10 ⁶ cells
	ICC/IF	5 µg/ml
	IHC-P	2-5 µg/ml
	WB	0.25-0.5 µg/ml
Application Note	* The dilutions indicate recommended starting dilutions and the optimal dilutions or concentrations should be determined by the scientist.	

Properties

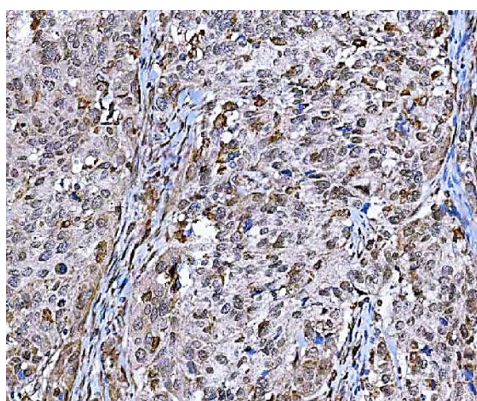
Form	Liquid
Purification	Affinity purification with immunogen.
Buffer	0.9% NaCl, 0.2% Na ₂ HPO ₄ , 0.05% Sodium azide and 5% BSA.
Preservative	0.05% Sodium azide
Stabilizer	5% BSA
Concentration	0.5 mg/ml

Storage instruction	For continuous use, store undiluted antibody at 2-8°C for up to a week. For long-term storage, aliquot and store at -20°C or below. Storage in frost free freezers is not recommended. Avoid repeated freeze/thaw cycles. Suggest spin the vial prior to opening. The antibody solution should be gently mixed before use.
Note	For laboratory research only, not for drug, diagnostic or other use.

Bioinformation

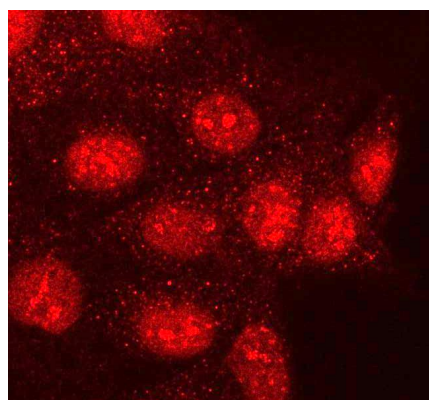
Gene Symbol	MMS19
Gene Full Name	Mms19 Homolog, Cytosolic Iron-Sulfur Assembly Component
Background	Enables estrogen receptor binding activity and transcription coactivator activity. Involved in several processes, including iron-sulfur cluster assembly; positive regulation of nucleobase-containing compound metabolic process; and protein maturation by iron-sulfur cluster transfer. Located in cytosol; nucleoplasm; and spindle. Part of CIA complex and MMXD complex.
Function	Key component of the cytosolic iron-sulfur protein assembly (CIA) complex, a multiprotein complex that mediates the incorporation of iron-sulfur cluster into apoproteins specifically involved in DNA metabolism and genomic integrity.
Calculated Mw	113 kDa
PTM	Acetylation, Phosphoprotein, Ubl conjugation
Cellular Localization	Cytoplasm, Cytoskeleton, Nucleus

Images



ARG44204 anti-MMS19 antibody IHC-P image

Immunohistochemistry: Human bladder urothelial carcinoma stained with ARG44204 anti-MMS19 antibody at 2 µg/mL dilution.

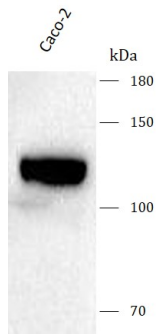


ARG44204 anti-MMS19 antibody ICC/IF image

Immunofluorescence: HeLa stained with ARG44204 anti-MMS19 antibody at 5 µg/mL dilution.

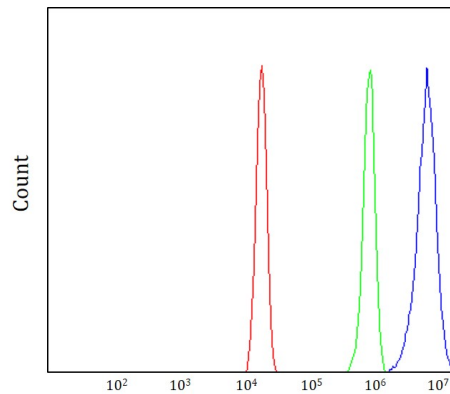
ARG44204 anti-MMS19 antibody WB image

Western blot: Caco-2 stained with ARG44204 anti-MMS19 antibody at 0.5 $\mu\text{g}/\text{mL}$ dilution.



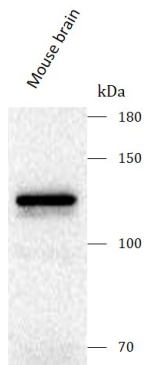
ARG44204 anti-MMS19 antibody FACS image

Flow Cytometry: HeLa stained with ARG44204 anti-MMS19 antibody at 1 $\mu\text{g}/1 \times 10^6$ cells dilution.



ARG44204 anti-MMS19 antibody WB image

Western blot: Mouse brain stained with ARG44204 anti-MMS19 antibody at 0.5 $\mu\text{g}/\text{mL}$ dilution.



ARG44204 anti-MMS19 antibody IHC-P image

Immunohistochemistry: Human colorectal adenocarcinoma stained with ARG44204 anti-MMS19 antibody at 2 $\mu\text{g}/\text{mL}$ dilution.

