

ARG44183 anti-NUCKS1 antibody

Package: 50 µg
Store at: -20°C

Summary

Product Description	Rabbit Polyclonal antibody recognizes NUCKS1
Tested Reactivity	Hu, Ms, Rat
Tested Application	FACS, IHC-P, WB
Host	Rabbit
Clonality	Polyclonal
Isotype	IgG
Target Name	NUCKS1
Species	Human
Immunogen	Recombinant protein of Human NUCKS1
Conjugation	Un-conjugated
Alternate Names	NUCKS1; Nuclear Casein Kinase And Cyclin Dependent Kinase Substrate 1; NUCKS; Nuclear Ubiquitous Casein And Cyclin-Dependent Kinase Substrate 1; P1; Nuclear Ubiquitous Casein Kinase And Cyclin-Dependent Kinase Substrate; Potential LAG1 Interactor; JC7

Application Instructions

Application table	Application	Dilution
	FACS	1-3 µg/1x10 ⁶ cells
	IHC-P	2-5 µg/ml
	WB	0.25-0.5 µg/ml
Application Note	* The dilutions indicate recommended starting dilutions and the optimal dilutions or concentrations should be determined by the scientist.	

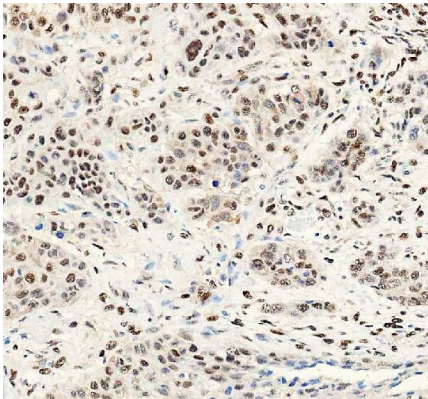
Properties

Form	Liquid
Purification	Affinity purification with immunogen.
Buffer	0.9% NaCl, 0.2% Na ₂ HPO ₄ , 0.05% Sodium azide and 5% BSA.
Preservative	0.05% Sodium azide
Stabilizer	5% BSA
Concentration	0.5 mg/ml
Storage instruction	For continuous use, store undiluted antibody at 2-8°C for up to a week. For long-term storage, aliquot and store at -20°C or below. Storage in frost free freezers is not recommended. Avoid repeated freeze/thaw cycles. Suggest spin the vial prior to opening. The antibody solution should be gently mixed before use.

Bioinformation

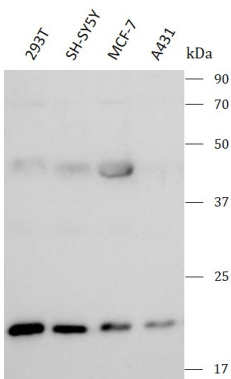
Gene Symbol	NUCKS1
Gene Full Name	Nuclear Casein Kinase And Cyclin Dependent Kinase Substrate 1
Background	This gene encodes a nuclear protein that is highly conserved in vertebrates. The conserved regions of the protein contain several consensus phosphorylation sites for casein kinase II and cyclin-dependent kinases, two putative nuclear localization signals, and a basic DNA-binding domain. It is phosphorylated in vivo by Cdk1 during mitosis of the cell cycle.
Function	Chromatin-associated protein involved in DNA repair by promoting homologous recombination (HR).
Calculated Mw	27 kDa
PTM	Phosphoprotein
Cellular Localization	Chromosome, Nucleus

Images



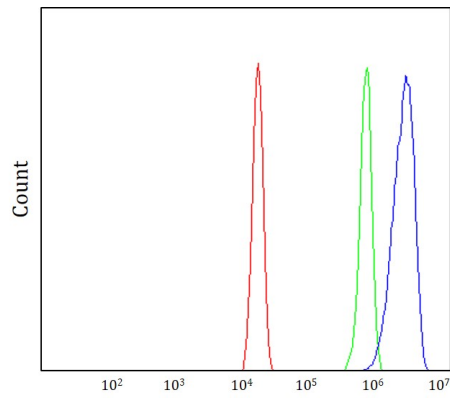
ARG44183 anti-NUCKS1 antibody IHC-P image

Immunohistochemistry: Human esophageal squamous carcinoma stained with ARG44183 anti-NUCKS1 antibody at 2 µg/mL dilution.



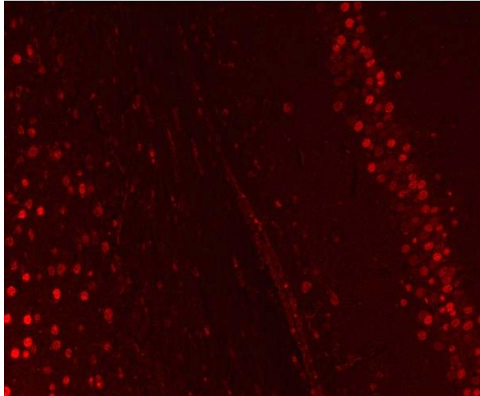
ARG44183 anti-NUCKS1 antibody WB image

Western blot: 293T, SH-SY5Y, MCF-7 and A431 stained with ARG44183 anti-NUCKS1 antibody at 0.5 µg/mL dilution.



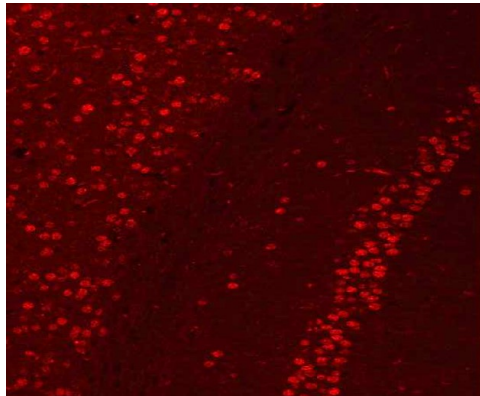
ARG44183 anti-NUCKS1 antibody FACS image

Flow Cytometry: HeLa stained with ARG44183 anti-NUCKS1 antibody at 1 $\mu\text{g}/1 \times 10^6$ cells dilution.



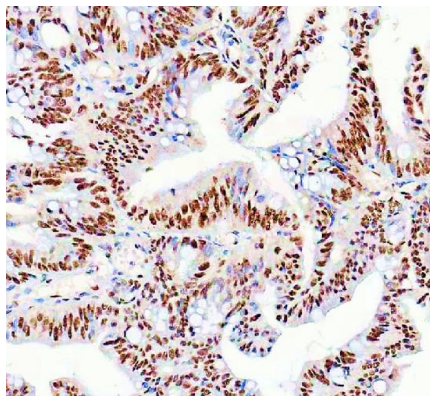
ARG44183 anti-NUCKS1 antibody IHC-P image

Immunohistochemistry: Rat brain stained with ARG44183 anti-NUCKS1 antibody at 5 $\mu\text{g}/\text{mL}$ dilution.



ARG44183 anti-NUCKS1 antibody IHC-P image

Immunohistochemistry: Mouse brain stained with ARG44183 anti-NUCKS1 antibody at 5 $\mu\text{g}/\text{mL}$ dilution.



ARG44183 anti-NUCKS1 antibody IHC-P image

Immunohistochemistry: Human rectum adenocarcinoma stained with ARG44183 anti-NUCKS1 antibody at 2 $\mu\text{g}/\text{mL}$ dilution.