

## ARG44174 anti-NUB1 antibody

Package: 50 µg  
Store at: -20°C

### Summary

Product Description	Rabbit Polyclonal antibody recognizes NUB1
Tested Reactivity	Hu, Ms, Rat, Mk
Tested Application	FACS, ICC/IF, IHC-P, WB
Host	Rabbit
Clonality	Polyclonal
Isotype	IgG
Target Name	NUB1
Species	Human
Immunogen	Recombinant protein of Human NUB1
Conjugation	Un-conjugated
Alternate Names	NUB1; Negative Regulator Of Ubiquitin Like Proteins 1; NYREN18; NUB1L; BS4; Renal Carcinoma Antigen NY-REN-18; NEDD8 Ultimate Buster-1; NEDD8 Ultimate Buster 1; Negative Regulator Of Ubiquitin-Like Proteins 1

### Application Instructions

Application table	Application	Dilution
	FACS	1-3 µg / 10 <sup>6</sup> cells
	ICC/IF	5 µg/ml
	IHC-P	2-5 µg/ml
	WB	0.1-0.25 µg/ml
Application Note	* The dilutions indicate recommended starting dilutions and the optimal dilutions or concentrations should be determined by the scientist.	

### Properties

Form	Liquid
Purification	Affinity purification with immunogen.
Buffer	0.9% NaCl, 0.2% Na <sub>2</sub> HPO <sub>4</sub> , 0.05% Sodium azide and 5% BSA.
Preservative	0.05% Sodium azide
Stabilizer	5% BSA
Concentration	0.5 mg/ml
Storage instruction	For continuous use, store undiluted antibody at 2-8°C for up to a week. For long-term storage, aliquot and store at -20°C or below. Storage in frost free freezers is not recommended. Avoid repeated freeze/thaw cycles. Suggest spin the vial prior to opening. The antibody solution should be gently mixed

before use.

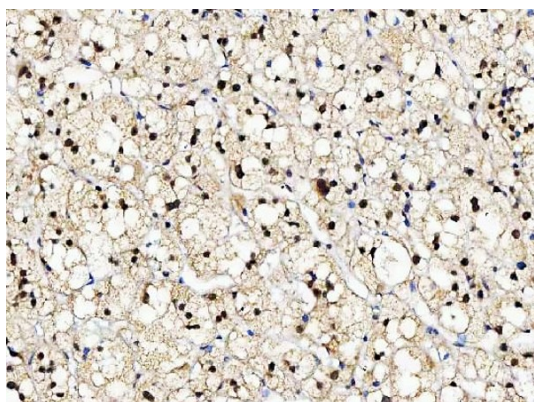
#### Note

For laboratory research only, not for drug, diagnostic or other use.

## Bioinformation

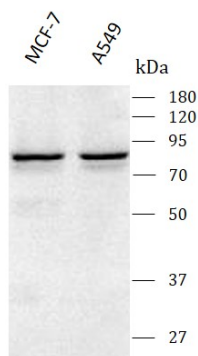
Gene Symbol	NUB1
Gene Full Name	Negative Regulator Of Ubiquitin Like Proteins 1
Background	This gene encodes a protein that functions as a negative regulator of NEDD8, a ubiquitin-like protein that conjugates with cullin family members in order to regulate vital biological events. The protein encoded by this gene regulates the NEDD8 conjugation system post-transcriptionally by recruiting NEDD8 and its conjugates to the proteasome for degradation. This protein interacts with the product of the AIPL1 gene, which is associated with Leber congenital amaurosis, an inherited retinopathy, and mutations in that gene can abolish interaction with this protein, which may contribute to the pathogenesis. This protein is also known to accumulate in Lewy bodies in Parkinson's disease and dementia with Lewy bodies, and in glial cytoplasmic inclusions in multiple system atrophy, with this abnormal accumulation being specific to alpha-synucleinopathy lesions. Alternative splicing of this gene results in multiple transcript variants.
Function	Specific down-regulator of the NEDD8 conjugation system. Recruits NEDD8, UBD, and their conjugates to the proteasome for degradation. Isoform 1 promotes the degradation of NEDD8 more efficiently than isoform 2.
Calculated Mw	71 kDa
Cellular Localization	Nucleus

## Images



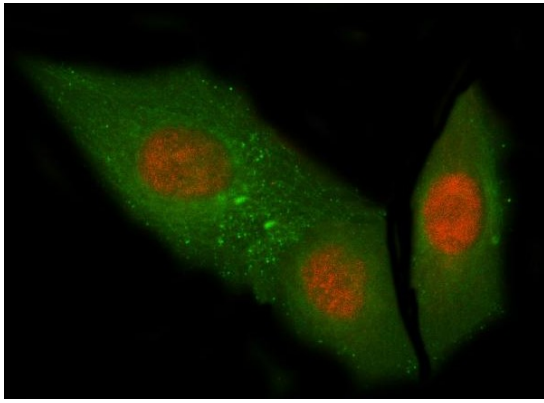
ARG44174 anti-NUB1 antibody IHC-P image

Immunohistochemistry: Human adrenal adenomas stained with ARG44174 anti-NUB1 antibody at 2 µg/mL dilution.



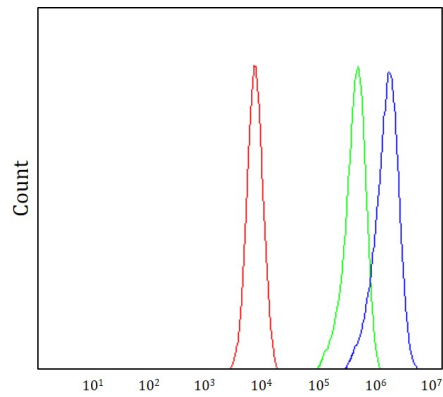
ARG44174 anti-NUB1 antibody WB image

Western blot: MCF-7 and A549 stained with ARG44174 anti-NUB1 antibody at 0.25 µg/mL dilution.



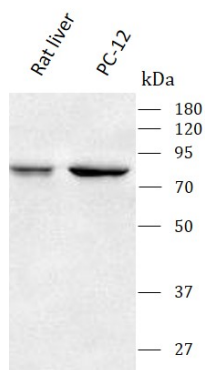
ARG44174 anti-NUB1 antibody ICC/IF image

Immunofluorescence: HeLa stained with ARG44174 anti-NUB1 antibody at 5  $\mu\text{g}/\text{mL}$  dilution.



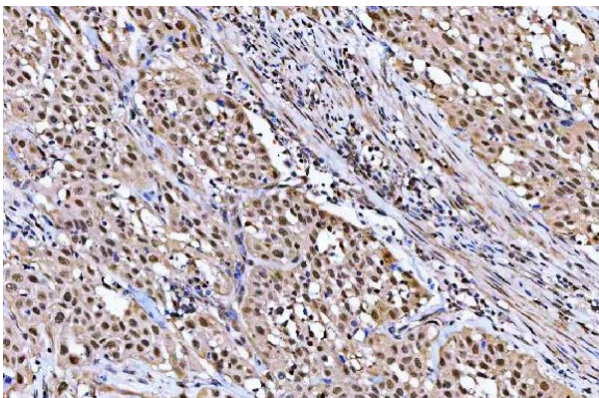
ARG44174 anti-NUB1 antibody FACS image

Flow Cytometry: K562 stained with ARG44174 anti-NUB1 antibody at 1  $\mu\text{g}/1 \times 10^6$  cells dilution.



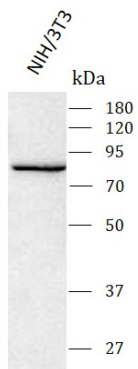
ARG44174 anti-NUB1 antibody WB image

Western blot: Rat liver and PC-12 stained with ARG44174 anti-NUB1 antibody at 0.25  $\mu\text{g}/\text{mL}$  dilution.



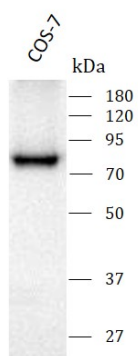
ARG44174 anti-NUB1 antibody IHC-P image

Immunohistochemistry: Human bladder urothelial carcinoma stained with ARG44174 anti-NUB1 antibody at 2  $\mu\text{g}/\text{mL}$  dilution.



ARG44174 anti-NUB1 antibody WB image

Western blot: NIH/3T3 stained with ARG44174 anti-NUB1 antibody at 0.25  $\mu\text{g}/\text{mL}$  dilution.



ARG44174 anti-NUB1 antibody WB image

Western blot: COS-7 stained with ARG44174 anti-NUB1 antibody at 0.25  $\mu\text{g}/\text{mL}$  dilution.