

ARG44169 anti-NXPE3 antibody

Package: 50 µg
Store at: -20°C

Summary

Product Description	Rabbit Polyclonal antibody recognizes NXPE3
Tested Reactivity	Hu
Tested Application	FACS, ICC/IF, WB
Host	Rabbit
Clonality	Polyclonal
Isotype	IgG
Target Name	NXPE3
Species	Human
Immunogen	Recombinant protein of Human NXPE3
Conjugation	Un-conjugated
Alternate Names	NXPE3; Neurexophilin And PC-Esterase Domain Family Member 3; FAM55C; Family With Sequence Similarity 55, Member C; NXPE Family Member 3; MGC15606; Neurexophilin And PC-Esterase Domain Family, Member 3; Protein FAM55C; MSTP115; MST115

Application Instructions

Application table	Application	Dilution
	FACS	1-3 µg / 10 ⁶ cells
	ICC/IF	5 µg/ml
	WB	0.25-0.5 µg/ml
Application Note	* The dilutions indicate recommended starting dilutions and the optimal dilutions or concentrations should be determined by the scientist.	

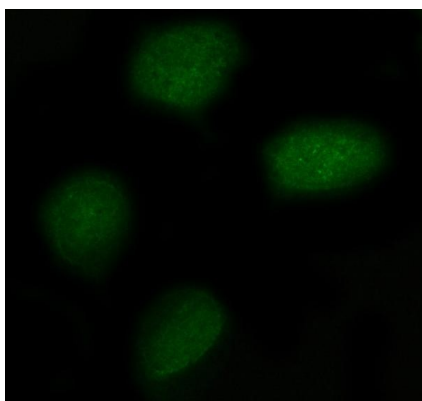
Properties

Form	Liquid
Purification	Affinity purification with immunogen.
Buffer	0.9% NaCl, 0.2% Na ₂ HPO ₄ , 0.05% Sodium azide and 5% BSA.
Preservative	0.05% Sodium azide
Stabilizer	5% BSA
Concentration	0.5 mg/ml
Storage instruction	For continuous use, store undiluted antibody at 2-8°C for up to a week. For long-term storage, aliquot and store at -20°C or below. Storage in frost free freezers is not recommended. Avoid repeated freeze/thaw cycles. Suggest spin the vial prior to opening. The antibody solution should be gently mixed before use.

Bioinformation

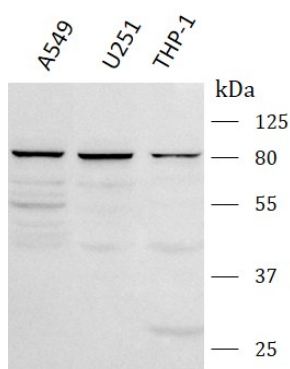
Gene Symbol	NXPE3
Gene Full Name	Neurexophilin And PC-Esterase Domain Family Member 3
Background	This gene encodes a member of the neurexophilin family of neuropeptide-like glycoproteins. The encoded protein contains a variable N-terminal domain, a highly conserved neurexophilin and PC-esterase (NXPE) central domain, a short linker region, and a cysteine-rich C-terminal domain. This protein binds alpha neurexins, a group of presynaptic transmembrane receptors that promote adhesion between dendrites and axons. Alternative splicing results in multiple transcript variants.
Calculated Mw	64 kDa
PTM	Glycoprotein
Cellular Localization	Secreted

Images



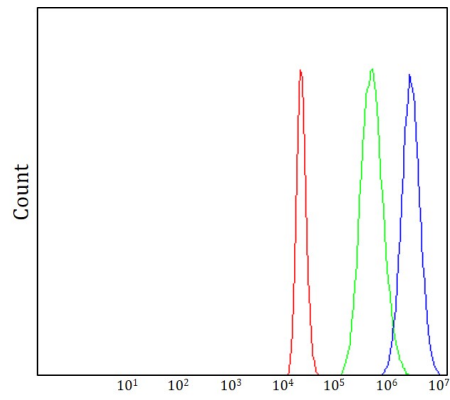
ARG44169 anti-NXPE3 antibody ICC/IF image

Immunofluorescence: U2OS stained with ARG44169 anti-NXPE3 antibody at 5 µg/mL dilution.



ARG44169 anti-NXPE3 antibody WB image

Western blot: A549, U251 and THP-1 stained with ARG44169 anti-NXPE3 antibody at 0.5 µg/mL dilution.



ARG44169 anti-NXPE3 antibody FACS image

Flow Cytometry: THP-1 stained with ARG44169 anti-NXPE3 antibody at $1\text{ }\mu\text{g}/1 \times 10^6$ cells dilution.