

ARG44167 anti-NSG1 / D4S234E antibody

Package: 50 µg
Store at: -20°C

Summary

| | |
|---------------------|---|
| Product Description | Rabbit Polyclonal antibody recognizes NSG1 / D4S234E |
| Tested Reactivity | Hu, Ms, Rat |
| Tested Application | FACS, IHC-P, WB |
| Host | Rabbit |
| Clonality | Polyclonal |
| Isotype | IgG |
| Target Name | NSG1 / D4S234E |
| Species | Human |
| Immunogen | Recombinant protein of Human NSG1 / D4S234E |
| Conjugation | Un-conjugated |
| Alternate Names | NSG1; Neuronal Vesicle Trafficking Associated 1; NEEP21; D4S234E; P21; Neuronal Vesicle Trafficking-Associated Protein 1; Neuron-Enriched Endosomal Protein Of 21 KDa; Neuron-Specific Protein Family Member 1; Neuron Specific Gene Family Member 1; D4S234; Carboxyterminally EE-Tagged Neuron-Enriched Endosomal 21 KDa Protein; DNA Segment On Chromosome 4 (Unique) 234 Expressed Sequence; Neuron-Enriched Endosomal Protein Of 21 KD; Brain Neuron Cytoplasmic Protein |

Application Instructions

| Application table | Application | Dilution |
|-------------------|--|--------------------------------|
| | FACS | 1-3 µg / 10 ⁶ cells |
| | IHC-P | 2-5 µg/ml |
| | WB | 0.25-0.5 µg/ml |
| Application Note | * The dilutions indicate recommended starting dilutions and the optimal dilutions or concentrations should be determined by the scientist. | |

Properties

| | |
|---------------------|---|
| Form | Liquid |
| Purification | Affinity purification with immunogen. |
| Buffer | 0.9% NaCl, 0.2% Na ₂ HPO ₄ , 0.05% Sodium azide and 5% BSA. |
| Preservative | 0.05% Sodium azide |
| Stabilizer | 5% BSA |
| Concentration | 0.5 mg/ml |
| Storage instruction | For continuous use, store undiluted antibody at 2-8°C for up to a week. For long-term storage, aliquot and store at -20°C or below. Storage in frost free freezers is not recommended. Avoid repeated |

freeze/thaw cycles. Suggest spin the vial prior to opening. The antibody solution should be gently mixed before use.

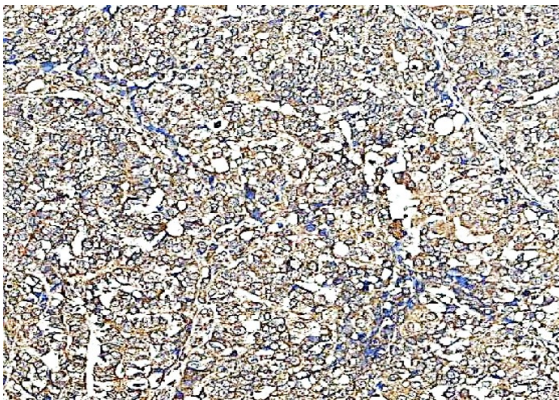
Note

For laboratory research only, not for drug, diagnostic or other use.

Bioinformation

| | |
|-----------------------|---|
| Gene Symbol | NSG1 |
| Gene Full Name | Neuronal Vesicle Trafficking Associated 1 |
| Background | Predicted to enable clathrin light chain binding activity. Involved in apoptotic process. Located in endoplasmic reticulum. |
| Function | Plays a role in the recycling mechanism in neurons of multiple receptors, including AMPAR, APP and L1CAM and acts at the level of early endosomes to promote sorting of receptors toward a recycling pathway. Regulates sorting and recycling of GRIA2 through interaction with GRIP1 and then contributes to the regulation of synaptic transmission and plasticity by affecting the recycling and targeting of AMPA receptors to the synapse. |
| Calculated Mw | 21 kDa |
| Cellular Localization | Cell projection, Cytoplasmic vesicle, Endoplasmic reticulum, Endosome, Golgi apparatus, Lysosome, Membrane |

Images



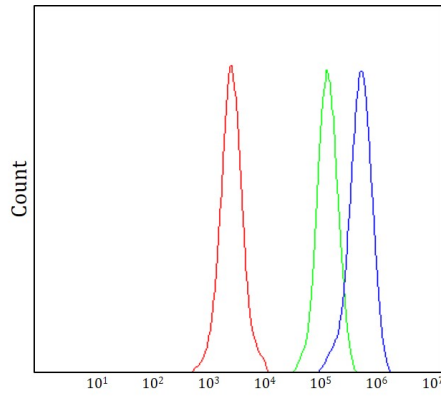
ARG44167 anti-NSG1 / D4S234E antibody IHC-P image

Immunohistochemistry: Human bladder urothelial carcinoma stained with ARG44167 anti-NSG1 / D4S234E antibody at 2 µg/mL dilution.



ARG44167 anti-NSG1 / D4S234E antibody WB image

Western blot: SH-SY5Y stained with ARG44167 anti-NSG1 / D4S234E antibody at 0.5 µg/mL dilution.



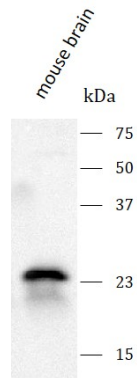
ARG44167 anti-NSG1 / D4S234E antibody FACS image

Flow Cytometry: JK cells stained with ARG44167 anti-NSG1 / D4S234E antibody at $1\text{ }\mu\text{g}/1\times 10^6$ cells dilution.



ARG44167 anti-NSG1 / D4S234E antibody WB image

Western blot: Rat brain stained with ARG44167 anti-NSG1 / D4S234E antibody at $0.5\text{ }\mu\text{g}/\text{mL}$ dilution.



ARG44167 anti-NSG1 / D4S234E antibody WB image

Western blot: Mouse brain stained with ARG44167 anti-NSG1 / D4S234E antibody at $0.5\text{ }\mu\text{g}/\text{mL}$ dilution.



ARG44167 anti-NSG1 / D4S234E antibody IHC-P image

Immunohistochemistry: Human large B-cell lymphoma stained with ARG44167 anti-NSG1 / D4S234E antibody at $2\text{ }\mu\text{g}/\text{mL}$ dilution.