

ARG44116 anti-NUP107 antibody

Package: 50 µg
Store at: -20°C

Summary

Product Description	Rabbit Polyclonal recognizes NUP107
Tested Reactivity	Hu, Ms, Rat
Tested Application	FACS, ICC/IF, WB
Host	Rabbit
Clonality	Polyclonal
Isotype	IgG
Target Name	NUP107
Species	Human
Immunogen	Human NUP107 recombinant protein (Position: K30-H790).
Conjugation	Un-conjugated
Alternate Names	NUP107; Nucleoporin 107; Nuclear Pore Complex Protein Nup107; NUP84; Nucleoporin 107kDa; 107 KDa Nucleoporin; Nucleoporin Nup107; ODG6; GAMOS7; NPHS11; ODG6

Application Instructions

Application table	Application	Dilution
	FACS	1 - 3 µg/10 ⁶ cells
	ICC/IF	5 µg/ml
	WB	0.25-0.5 µg/ml
Application Note	The dilutions indicate recommended starting dilutions and the optimal dilutions or concentrations should be determined by the scientist.	

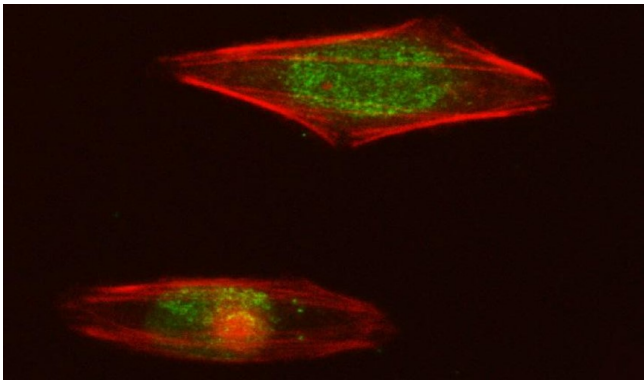
Properties

Form	Liquid
Purification	Affinity purification with immunogen.
Buffer	0.9% NaCl, 0.2% Na ₂ HPO ₄ , 0.05% Sodium azide and 4% Trehalose.
Preservative	0.05% Sodium azide
Stabilizer	4% Trehalose
Concentration	0.5 mg/ml
Storage instruction	For continuous use, store undiluted antibody at 2-8°C for up to a week. For long-term storage, aliquot and store at -20°C or below. Storage in frost free freezers is not recommended. Avoid repeated freeze/thaw cycles. Suggest spin the vial prior to opening. The antibody solution should be gently mixed before use.

Bioinformation

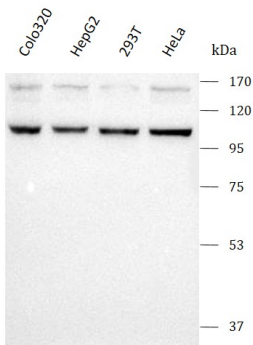
Gene Symbol	NUP107
Gene Full Name	Nucleoporin 107
Background	This gene encodes a member of the nucleoporin family. The protein is localized to the nuclear rim and is an essential component of the nuclear pore complex (NPC). All molecules entering or leaving the nucleus either diffuse through or are actively transported by the NPC. Alternate transcriptional splice variants of this gene have been observed but have not been thoroughly characterized. [provided by RefSeq, Jul 2008]
Function	Plays a role in the nuclear pore complex (NPC) assembly and/or maintenance.
Research Area	Controls and Markers antibody; Gene Regulation antibody; Signaling Transduction antibody
Calculated Mw	107 kDa
PTM	Acetylation, Methylation, Phosphoprotein
Cellular Localization	Centromere, Chromosome, Kinetochore, Membrane, Nuclear pore complex, Nucleus

Images



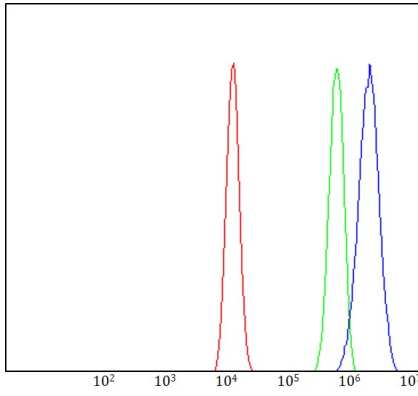
ARG44116 Anti-NUP107 Antibody ICC/IF image

Immunofluorescence: U2OS stained with ARG44116 Anti-NUP107 Antibody at 5 µg/ml dilution.



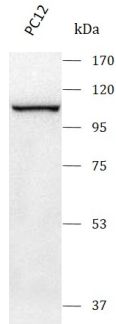
ARG44116 Anti-NUP107 Antibody WB image

Western blot: Colo320, HepG2, 293T and HeLa stained with ARG44116 Anti-NUP107 Antibody at 0.5 µg/ml dilution.



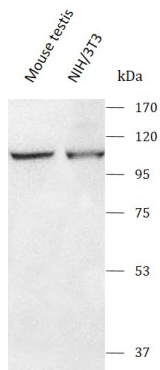
ARG44116 Anti-NUP107 Antibody FACS image

Flow Cytometry: HEL stained with ARG44116 Anti-NUP107 Antibody at $1 \mu\text{g}/10^6$ cells dilution.



ARG44116 Anti-NUP107 Antibody WB image

Western blot: PC-12 stained with ARG44116 Anti-NUP107 Antibody at $0.5 \mu\text{g}/\text{ml}$ dilution.



ARG44116 Anti-NUP107 Antibody WB image

Western blot: Mouse testis and NIH/3T3 stained with ARG44116 Anti-NUP107 Antibody at $0.5 \mu\text{g}/\text{ml}$ dilution.