

ARG44088
anti-NAT10 / hALP antibodyPackage: 50 µg
Store at: -20°C

Summary

Product Description	Rabbit Polyclonal recognizes NAT10 / hALP
Tested Reactivity	Hu
Tested Application	FACS, ICC/IF, WB
Host	Rabbit
Clonality	Polyclonal
Isotype	IgG
Target Name	NAT10 / hALP
Species	Human
Immunogen	Human NAT10 recombinant protein (Position: Q22-L740).
Conjugation	Un-conjugated
Alternate Names	N-acetyltransferase 10; NET43; EC 2.3.1.-; ALP

Application Instructions

Application table	Application	Dilution
	FACS	1 - 3 µg/10 ⁶ cells
	ICC/IF	5 µg/ml
	WB	0.25 - 0.5 µg/ml
Application Note	The dilutions indicate recommended starting dilutions and the optimal dilutions or concentrations should be determined by the scientist.	

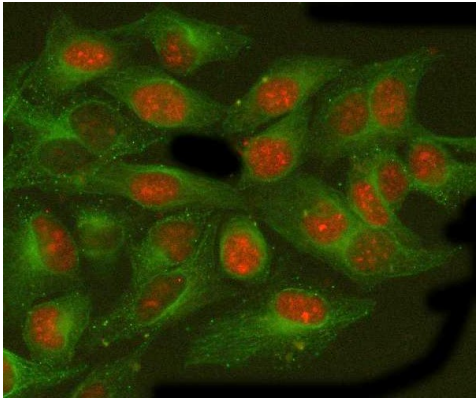
Properties

Form	Liquid
Purification	Affinity purification with immunogen.
Buffer	0.9% NaCl, 0.2% Na ₂ HPO ₄ , 0.05% Sodium azide and 4% Trehalose.
Preservative	0.05% Sodium azide
Stabilizer	4% Trehalose
Concentration	0.5 mg/ml
Storage instruction	For continuous use, store undiluted antibody at 2-8°C for up to a week. For long-term storage, aliquot and store at -20°C or below. Storage in frost free freezers is not recommended. Avoid repeated freeze/thaw cycles. Suggest spin the vial prior to opening. The antibody solution should be gently mixed before use.
Note	For laboratory research only, not for drug, diagnostic or other use.

Bioinformation

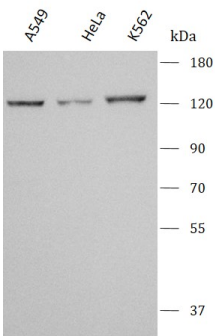
Gene Symbol	NAT10
Gene Full Name	N-acetyltransferase 10 (GCN5-related)
Function	Has protein acetyltransferase activity in vitro. Can acetylate both histones and microtubules. Histone acetylation may regulate transcription and mitotic chromosome de-condensation. Activates telomerase activity by stimulating the transcription of TERT, and may also regulate telomerase function by affecting the balance of telomerase subunit assembly, disassembly, and localization. Acetylates alpha-tubulin, which may affect microtubule stability and cell division. [UniProt]
Research Area	Cell Biology and Cellular Response antibody; Gene Regulation antibody; Signaling Transduction antibody
Calculated Mw	116 kDa

Images



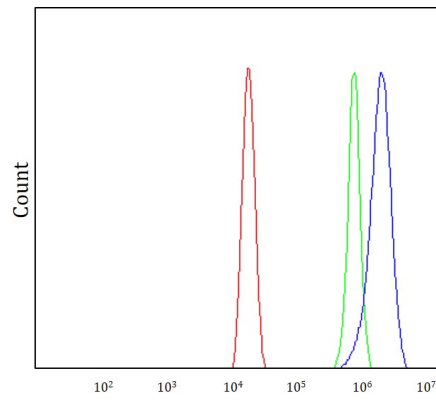
ARG44088 anti-NAT10 / hALP antibody ICC/IF image

Immunofluorescence: HeLa stained with ARG44088 anti-NAT10 / hALP antibody at 5 µg/ml dilution.



ARG44088 anti-NAT10 / hALP antibody WB image

Western blot: A549, HeLa and K562 stained with ARG44088 anti-NAT10 / hALP antibody at 0.5 µg/mL dilution.



ARG44088 anti-NAT10 / hALP antibody FACS image

Flow Cytometry: HeLa stained with ARG44088 anti-NAT10 / hALP antibody at $1 \mu\text{g}/10^6$ cells dilution.