

ARG44080 anti-PSPC1 antibody

Package: 50 µg
Store at: -20°C

Summary

Product Description	Rabbit Polyclonal recognizes PSPC1
Tested Reactivity	Hu, Ms, Rat
Tested Application	FACS, ICC/IF, IHC-P, WB
Host	Rabbit
Clonality	Polyclonal
Isotype	IgG
Target Name	PSPC1
Species	Human
Immunogen	Human PSPC1 recombinant protein (Position: E96-Q489).
Conjugation	Un-conjugated
Alternate Names	Paraspeckle component 1; Paraspeckle protein 1; PSP1

Application Instructions

Application table	Application	Dilution
	FACS	1 - 3 µg/10 ⁶ cells
	ICC/IF	5 µg/ml
	IHC-P	2 - 5 µg/ml
	WB	0.1 - 0.25 µg/ml
Application Note	The dilutions indicate recommended starting dilutions and the optimal dilutions or concentrations should be determined by the scientist.	

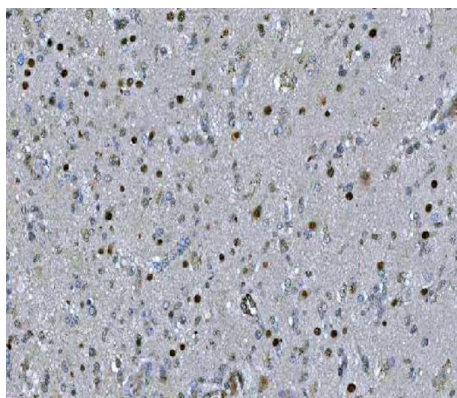
Properties

Form	Liquid
Purification	Affinity purification with immunogen.
Buffer	0.9% NaCl, 0.2% Na ₂ HPO ₄ , 0.05% Sodium azide and 4% Trehalose.
Preservative	0.05% Sodium azide
Stabilizer	4% Trehalose
Concentration	0.5 mg/ml
Storage instruction	For continuous use, store undiluted antibody at 2-8°C for up to a week. For long-term storage, aliquot and store at -20°C or below. Storage in frost free freezers is not recommended. Avoid repeated freeze/thaw cycles. Suggest spin the vial prior to opening. The antibody solution should be gently mixed before use.

Bioinformation

Gene Symbol	PSPC1
Gene Full Name	paraspeckle component 1
Background	<p>This gene encodes a nucleolar protein that localizes to punctate subnuclear structures that occur close to splicing speckles, known as paraspeckles. These paraspeckles are composed of RNA-protein structures that include a non-coding RNA, NEAT1/Men epsilon/beta, and the Drosophila Behavior Human Splicing family of proteins, which include the product of this gene and the P54NRB/NONO and PSF/SFPQ proteins. Paraspeckles may function in the control of gene expression via an RNA nuclear retention mechanism. The protein encoded by this gene is found in paraspeckles in transcriptionally active cells, but it localizes to unique cap structures at the nucleolar periphery when RNA polymerase II transcription is inhibited, or during telophase. Alternative splicing of this gene results in multiple transcript variants. A related pseudogene, which is also located on chromosome 13, has been identified. [provided by RefSeq, Aug 2011]</p>
Function	<p>Regulates, cooperatively with NONO and SFPQ, androgen receptor-mediated gene transcription activity in Sertoli cell line (By similarity). Binds to poly(A), poly(G) and poly(U) RNA homopolymers. Regulates the circadian clock by repressing the transcriptional activator activity of the CLOCK-ARNTL/BMAL1 heterodimer (By similarity). Together with NONO, required for the formation of nuclear paraspeckles. [UniProt]</p>
Calculated Mw	59 kDa
Cellular Localization	<p>Nucleus, nucleolus. Nucleus matrix. Cytoplasm. Nucleus speckle. Note=In punctate subnuclear structures often located adjacent to splicing speckles, called paraspeckles. Colocalizes with NONO and SFPQ in paraspeckles and perinucleolar caps in an RNA-dependent manner. May cycle between paraspeckles and nucleolus. In telophase, when daughter nuclei form, localizes to perinucleolar caps. [UniProt]</p>

Images

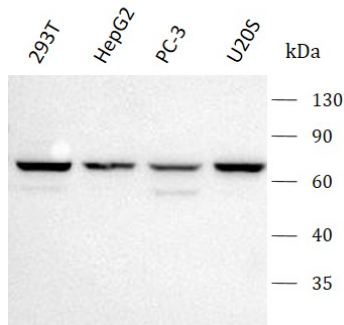


ARG44080 anti-PSPC1 antibody IHC-P image

Immunohistochemistry: Human glioblastoma stained with ARG44080 anti-PSPC1 antibody at 2 µg/ml dilution.

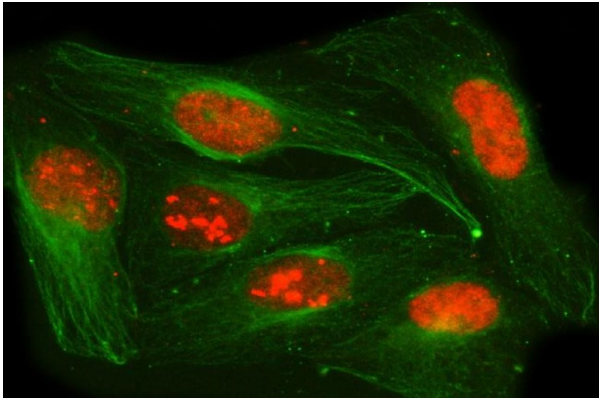
ARG44080 anti-PSPC1 antibody WB image

Western blot: 293T, HepG2, PC-3 and U2OS stained with ARG44080 anti-PSPC1 antibody at 0.5 $\mu\text{g}/\text{mL}$ dilution.



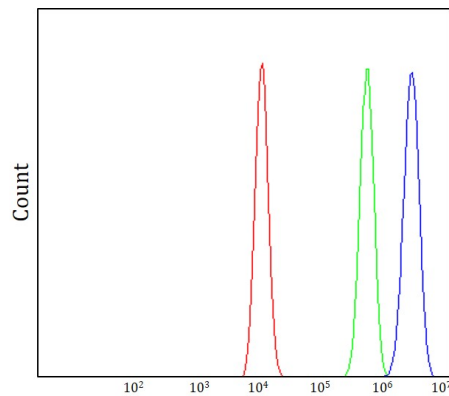
ARG44080 anti-PSPC1 antibody ICC/IF image

Immunofluorescence: U2OS stained with ARG44080 anti-PSPC1 antibody at 5 $\mu\text{g}/\text{ml}$ dilution.



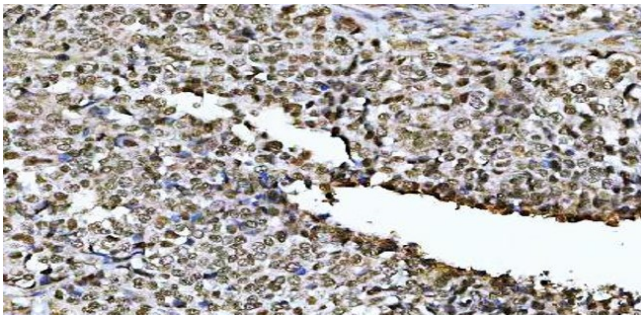
ARG44080 anti-PSPC1 antibody FACS image

Flow Cytometry: HEL stained with ARG44080 anti-PSPC1 antibody at 1 $\mu\text{g}/10^6$ cells dilution.



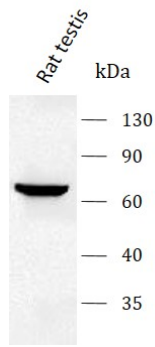
ARG44080 anti-PSPC1 antibody IHC-P image

Immunohistochemistry: Human ovarian serous adenocarcinoma stained with ARG44080 anti-PSPC1 antibody at 2 $\mu\text{g}/\text{ml}$ dilution.



ARG44080 anti-PSPC1 antibody WB image

Western blot: Rat testis stained with ARG44080 anti-PSPC1 antibody at 0.5 $\mu\text{g}/\text{mL}$ dilution.



ARG44080 anti-PSPC1 antibody WB image

Western blot: Mouse testis stained with ARG44080 anti-PSPC1 antibody at 0.5 $\mu\text{g}/\text{mL}$ dilution.

