

ARG44017 anti-TIM1 / KIM1 antibody

Package: 50 µg
Store at: -20°C

Summary

Product Description	Rabbit Polyclonal antibody recognizes TIM1 / KIM1
Tested Reactivity	Hu, Ms
Tested Application	IHC-P, WB
Host	Rabbit
Clonality	Polyclonal
Isotype	IgG
Target Name	TIM1 / KIM1
Species	Human
Immunogen	Human TIM1 / KIM1 recombinantprotein
Conjugation	Un-conjugated
Alternate Names	HAVCR1; Hepatitis A Virus Cellular Receptor 1; TIM-1; TIMD1; TIM1; KIM1; Kidney Injury Molecule 1; HAVCR-1; HAVCR; CD365; T-Cell Immunoglobulin Mucin Family Member 1; T-Cell Immunoglobulin Mucin Receptor 1; T-Cell Membrane Protein 1; TIMD-1; KIM-1; TIM; T-Cell Immunoglobulin And Mucin Domain-Containing Protein 1; T Cell Immunoglobulin Domain And Mucin Domain Protein 1; CD365 Antigen; HAVcr

Application Instructions

Application table	Application	Dilution
	IHC-P	10 µg/mL
	WB	1-8 µg/mL
Application Note	* The dilutions indicate recommended starting dilutions and the optimal dilutions or concentrations should be determined by the scientist.	

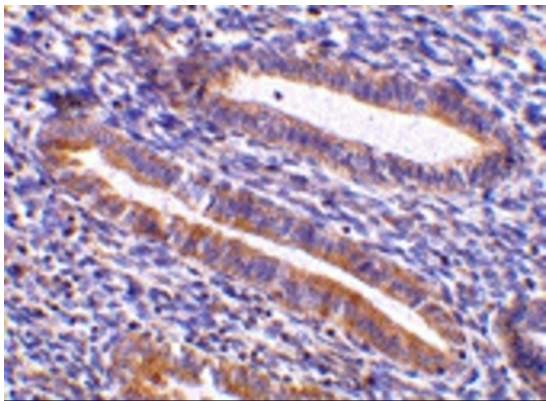
Properties

Form	Liquid
Purification	Affinity purified.
Buffer	PBS containing 0.02% sodium azide
Preservative	0.02% sodium azide
Concentration	1 mg/ml
Storage instruction	For continuous use, store undiluted antibody at 2-8°C for up to a week. For long-term storage, aliquot and store at -20°C or below. Storage in frost free freezers is not recommended. Avoid repeated freeze/thaw cycles. Suggest spin the vial prior to opening. The antibody solution should be gently mixed before use.
Note	For laboratory research only, not for drug, diagnostic or other use.

Bioinformation

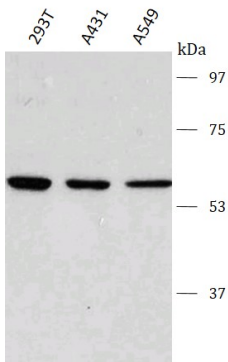
Gene Symbol	HAVCR1
Gene Full Name	Hepatitis A Virus Cellular Receptor 1
Background	The protein encoded by this gene is a membrane receptor for both human hepatitis A virus (HHAV) and TIMD4. The encoded protein may be involved in the moderation of asthma and allergic diseases. The reference genome represents an allele that retains a MTTVP amino acid segment that confers protection against atopy in HHAV seropositive individuals. The protein is a receptor for multiple other viruses, including Ebola virus, Marburg virus, Dengue virus, and Zika virus and is a possible entry factor for SARS-CoV-2 and other coronaviruses.
Function	Phosphatidylserine receptor that plays an important functional role in regulatory B-cells homeostasis including generation, expansion and suppressor functions.
Calculated Mw	39 kDa
PTM	Disulfide bond, Glycoprotein, Isopeptide bond, Ubl conjugation
Cellular Localization	Cell membrane, Membrane

Images



ARG44017 anti-TIM1 / KIM1 antibody IHC-P image

Immunohistochemistry: Human uterus stained with ARG44017 anti-TIM1 / KIM1 antibody at 10 µg/mL dilution.



ARG44017 anti-TIM1 / KIM1 antibody WB image

Western blot: 293T, A431 and A549 stained with ARG44017 anti-TIM1 / KIM1 antibody at 8 µg/ml dilution.