

ARG44001 anti-PSME1 antibody

Package: 50 µg
Store at: -20°C

Summary

Product Description	Rabbit Polyclonal antibody recognizes PSME1
Tested Reactivity	Hu, Ms, Rat
Tested Application	ELISA, FACS, ICC/IF, WB
Host	Rabbit
Clonality	Polyclonal
Isotype	IgG
Target Name	PSME1
Species	Human
Immunogen	Human PSME1 recombinant protein
Conjugation	Un-conjugated
Alternate Names	PSME1; Proteasome Activator Subunit 1; PA28alpha; IFI5111; Proteasome (Prosome, Macropain) Activator Subunit 1 (PA28 Alpha); Activator Of Multicatalytic Protease Subunit 1; Interferon Gamma Up-Regulated I-5111 Protein; Proteasome Activator Complex Subunit 1; 11S Regulator Complex Subunit Alpha; IGUP I-5111; Epididymis Secretory Sperm Binding Protein Li 129m; Interferon-Gamma-Inducible Protein 5111; Proteasome Activator 28 Subunit Alpha; Interferon-Gamma IEF SSP 5111; 29-KD MCP Activator Subunit; HEL-S-129m; REG-Alpha; REGalpha; PA28A; PA28a

Application Instructions

Application table	Application	Dilution
	ELISA	0.1-0.5 µg/ml
	FACS	1-3 µg/1x10 ⁶
	ICC/IF	5 µg/ml
	WB	0.1-0.25 µg/ml
Application Note	* The dilutions indicate recommended starting dilutions and the optimal dilutions or concentrations should be determined by the scientist.	

Properties

Form	Liquid
Purification	Affinity purified with Immunogen.
Buffer	0.9% NaCl, 0.2% Na2HPO4 and 4% Trehalose.
Stabilizer	4% Trehalose
Concentration	0.5 mg/ml
Storage instruction	For continuous use, store undiluted antibody at 2-8°C for up to a week. For long-term storage, aliquot

and store at -20°C or below. Storage in frost free freezers is not recommended. Avoid repeated freeze/thaw cycles. Suggest spin the vial prior to opening. The antibody solution should be gently mixed before use.

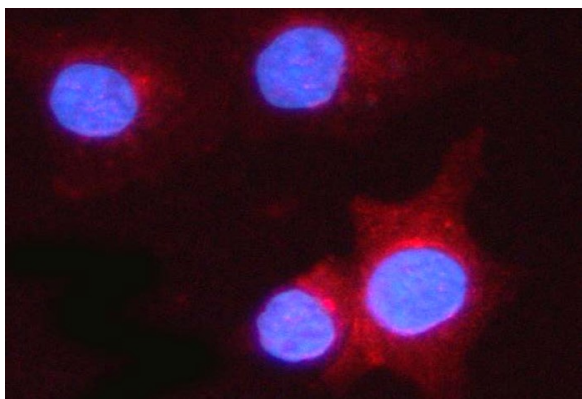
Note

For laboratory research only, not for drug, diagnostic or other use.

Bioinformation

Gene Symbol	PSME1
Gene Full Name	Proteasome Activator Subunit 1
Background	<p>The 26S proteasome is a multicatalytic proteinase complex with a highly ordered structure composed of 2 complexes, a 20S core and a 19S regulator. The 20S core is composed of 4 rings of 28 non-identical subunits; 2 rings are composed of 7 alpha subunits and 2 rings are composed of 7 beta subunits. The 19S regulator is composed of a base, which contains 6 ATPase subunits and 2 non-ATPase subunits, and a lid, which contains up to 10 non-ATPase subunits. Proteasomes are distributed throughout eukaryotic cells at a high concentration and cleave peptides in an ATP/ubiquitin-dependent process in a non-lysosomal pathway. An essential function of a modified proteasome, the immunoproteasome, is the processing of class I MHC peptides. The immunoproteasome contains an alternate regulator, referred to as the 11S regulator or PA28, that replaces the 19S regulator. Three subunits (alpha, beta and gamma) of the 11S regulator have been identified. This gene encodes the alpha subunit of the 11S regulator, one of the two 11S subunits that is induced by gamma-interferon. Three alpha and three beta subunits combine to form a heterohexameric ring. Alternative splicing results in multiple transcript variants.</p>
Function	<p>Implicated in immunoproteasome assembly and required for efficient antigen processing. The PA28 activator complex enhances the generation of class I binding peptides by altering the cleavage pattern of the proteasome.</p>
Calculated Mw	29 kDa
Cellular Localization	Proteasome

Images

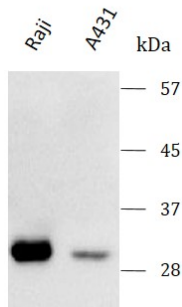


ARG44001 anti-PSME1 antibody ICC/IF image

Immunofluorescence: A549 cells stained with ARG44001 anti-PSME1 antibody 5 µg/ml dilution.

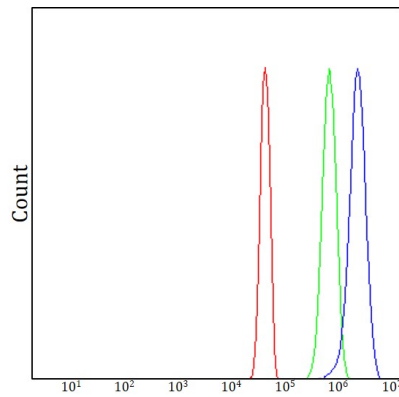
ARG44001 anti-PSME1 antibody WB image

Western blot: Raji and A431 stained with ARG44001 anti-PSME1 antibody at 0.5 $\mu\text{g}/\text{mL}$ dilution.



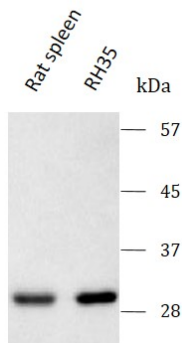
ARG44001 anti-PSME1 antibody FACS image

Flow Cytometry: JK cells stained with ARG44001 anti-PSME1 antibody (blue) at 1 $\mu\text{g}/1 \times 10^6$ cells dilution.



ARG44001 anti-PSME1 antibody WB image

Western blot: Rat spleen and RH35 stained with ARG44001 anti-PSME1 antibody at 0.5 $\mu\text{g}/\text{mL}$ dilution.



ARG44001 anti-PSME1 antibody WB image

Western blot: Mouse spleen and RAW264.7 stained with ARG44001 anti-PSME1 antibody at 0.5 $\mu\text{g}/\text{mL}$ dilution.

