

## ARG43992 anti-Proteasome 20S LMP2 antibody

Package: 50 µg  
Store at: -20°C

### Summary

Product Description	Rabbit Polyclonal antibody recognizes Proteasome 20S LMP2
Tested Reactivity	Hu, Ms, Rat
Tested Application	ELISA, FACS, IHC-P, WB
Host	Rabbit
Clonality	Polyclonal
Isotype	IgG
Target Name	Proteasome 20S LMP2
Species	Human
Immunogen	Human Proteasome 20S LMP2 recombinant protein
Conjugation	Un-conjugated
Alternate Names	PSMB9; Proteasome 20S Subunit Beta 9; RING12; PSMB6i; Beta1i; LMP2 ; Multicatalytic Endopeptidase Complex Chain 7; Really Interesting New Gene 12 Protein; Large Multifunctional Peptidase 2; Proteasome Subunit Beta Type-9; Low Molecular Mass Protein 2; Proteasome Subunit Beta-1i; Proteasome Subunit Beta 9; Proteasome Chain 7; Macropain Chain 7; EC 3.4.25.1; Proteasome (Prosome, Macropain) Subunit, Beta Type, 9 ; Proteasome Catalytic Subunit 1i; Proteasome Subunit Beta 6i; Proteasome Subunit Beta1i; Proteasome-Related Gene; Proteasome Subunit B1i; PRAAS3

### Application Instructions

Application table	Application	Dilution
	ELISA	0.1-0.5 µg/ml
	FACS	1-3 µg/1x10 <sup>6</sup>
	IHC-P	2-5 µg/ml
	WB	0.25-0.5 µg/ml
Application Note	* The dilutions indicate recommended starting dilutions and the optimal dilutions or concentrations should be determined by the scientist.	

### Properties

Form	Liquid
Purification	Affinity purified with Immunogen.
Buffer	0.9% NaCl, 0.2% Na2HPO4 and 4% Trehalose.
Stabilizer	4% Trehalose
Concentration	0.5 mg/ml
Storage instruction	For continuous use, store undiluted antibody at 2-8°C for up to a week. For long-term storage, aliquot

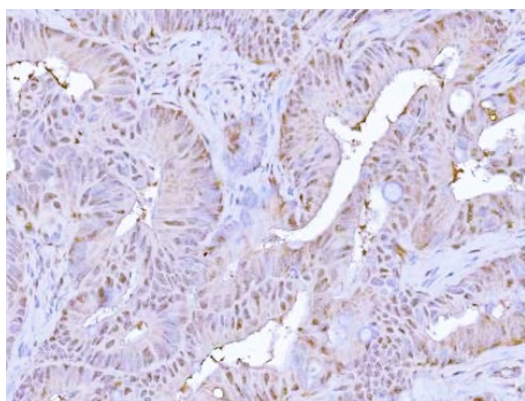
and store at -20°C or below. Storage in frost free freezers is not recommended. Avoid repeated freeze/thaw cycles. Suggest spin the vial prior to opening. The antibody solution should be gently mixed before use.

**Note** For laboratory research only, not for drug, diagnostic or other use.

## Bioinformation

Gene Symbol	PSMB9
Gene Full Name	Proteasome 20S Subunit Beta 9
Background	The proteasome is a multicatalytic proteinase complex with a highly ordered ring-shaped 20S core structure. The core structure is composed of 4 rings of 28 non-identical subunits; 2 rings are composed of 7 alpha subunits and 2 rings are composed of 7 beta subunits. Proteasomes are distributed throughout eukaryotic cells at a high concentration and cleave peptides in an ATP/ubiquitin-dependent process in a non-lysosomal pathway. An essential function of a modified proteasome, the immunoproteasome, is the processing of class I MHC peptides. This gene encodes a member of the proteasome B-type family, also known as the T1B family, that is a 20S core beta subunit. This gene is located in the class II region of the MHC (major histocompatibility complex). Expression of this gene is induced by gamma interferon and this gene product replaces catalytic subunit 1 (proteasome beta 6 subunit) in the immunoproteasome. Proteolytic processing is required to generate a mature subunit.
Function	The proteasome is a multicatalytic proteinase complex which is characterized by its ability to cleave peptides with Arg, Phe, Tyr, Leu, and Glu adjacent to the leaving group at neutral or slightly basic pH. The proteasome has an ATP-dependent proteolytic activity. This subunit is involved in antigen processing to generate class I binding peptides. Replacement of PSMB6 by PSMB9 increases the capacity of the immunoproteasome to cleave model peptides after hydrophobic and basic residues.
Calculated Mw	23 kDa
PTM	Acetylation, Zymogen
Cellular Localization	Cytoplasm, Nucleus, Proteasome

## Images

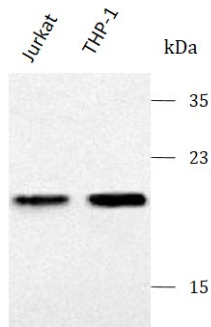


ARG43992 anti-Proteasome 20S LMP2 antibody IHC-P image

Immunohistochemistry: Human rectum adenocarcinoma stained with ARG43992 anti-Proteasome 20S LMP2 antibody at 2 µg/ml dilution.

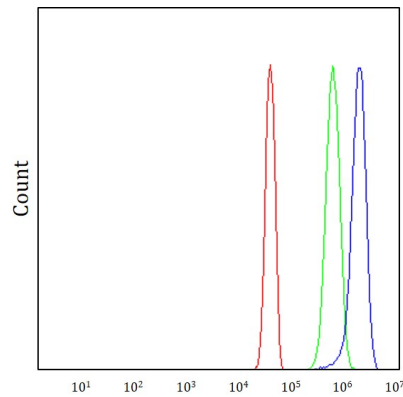
#### ARG43992 anti-Proteasome 20S LMP2 antibody WB image

Western blot: Jurkat and THP-1 stained with ARG43992 anti-Proteasome 20S LMP2 antibody at 0.5 µg/mL dilution.



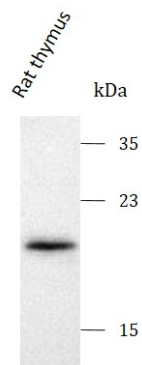
#### ARG43992 anti-Proteasome 20S LMP2 antibody FACS image

Flow Cytometry: JK cells stained with ARG43992 anti-Proteasome 20S LMP2 antibody (blue) at 1 µg/1x10<sup>6</sup> cells dilution.



#### ARG43992 anti-Proteasome 20S LMP2 antibody WB image

Western blot: Rat thymus ARG43992 anti-Proteasome 20S LMP2 antibody at 0.5 µg/mL dilution.



#### ARG43992 anti-Proteasome 20S LMP2 antibody WB image

Western blot: Mouse thymus ARG43992 anti-Proteasome 20S LMP2 antibody at 0.5 µg/mL dilution.

