

ARG43975 anti-PRPF31 / RP11 antibody

Package: 50 µg
Store at: -20°C

Summary

Product Description	Rabbit Polyclonal antibody recognizes PRPF31 / RP11
Tested Reactivity	Hu, Ms, Rat
Tested Application	ELISA, FACS, ICC/IF, WB
Host	Rabbit
Clonality	Polyclonal
Isotype	IgG
Target Name	PRPF31 / RP11
Species	Human
Immunogen	Human PRPF31 / RP11 recombinant protein
Conjugation	Un-conjugated
Alternate Names	PRPF31; Pre-mRNA Processing Factor 31; HPrp31; PRP31; U4/U6 Small Nuclear Ribonucleoprotein Prp31; NY-BR-99; SNRNP61; Serologically Defined Breast Cancer Antigen NY-BR-99; U4/U6 SnRNP 61 KDa Protein; Protein 61K; RP11; PRP31 Pre-mRNA Processing Factor 31 Homolog; Pre-mRNA-Processing Factor 31

Application Instructions

Application table	Application	Dilution
	ELISA	0.1-0.5 µg/ml
	FACS	1-3 µg/1x10 ⁶
	ICC/IF	5 µg/ml
	WB	0.25-0.5 µg/ml
Application Note	* The dilutions indicate recommended starting dilutions and the optimal dilutions or concentrations should be determined by the scientist.	

Properties

Form	Liquid
Purification	Affinity purified with Immunogen.
Buffer	0.9% NaCl, 0.2% Na ₂ HPO ₄ and 4% Trehalose.
Stabilizer	4% Trehalose
Concentration	0.5 mg/ml
Storage instruction	For continuous use, store undiluted antibody at 2-8°C for up to a week. For long-term storage, aliquot and store at -20°C or below. Storage in frost free freezers is not recommended. Avoid repeated freeze/thaw cycles. Suggest spin the vial prior to opening. The antibody solution should be gently mixed

before use.

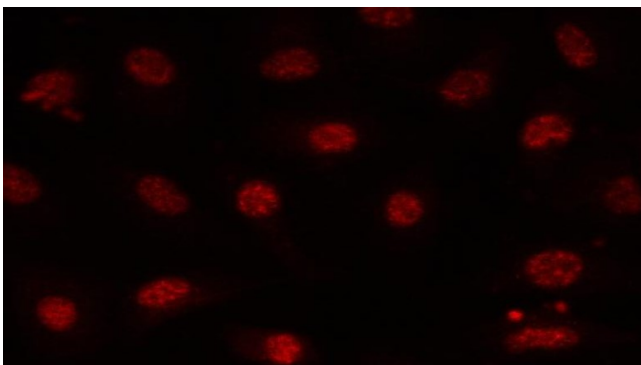
Note

For laboratory research only, not for drug, diagnostic or other use.

Bioinformation

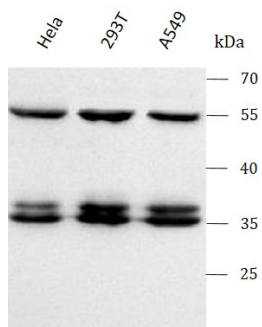
Gene Symbol	PRPF31
Gene Full Name	Pre-mRNA Processing Factor 31
Background	This gene encodes a component of the spliceosome complex and is one of several retinitis pigmentosa-causing genes. When the gene product is added to the spliceosome complex, activation occurs.
Function	Required for the assembly of the U4/U5/U6 tri-snRNP complex, one of the building blocks of the spliceosome.
Calculated Mw	55 kDa
PTM	Acetylation, Isopeptide bond, Phosphoprotein, Ubl conjugation
Cellular Localization	Nucleus, Spliceosome

Images



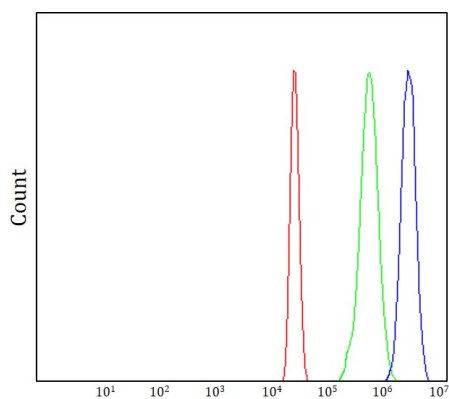
ARG43975 anti-PRPF31 / RP11 antibody ICC/IF image

Immunofluorescence: A549 cells stained with ARG43975 anti-PRPF31 / RP11 antibody at 5 µg/ml dilution.



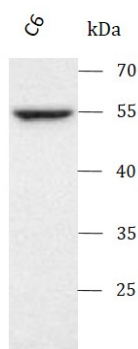
ARG43975 anti-PRPF31 / RP11 antibody WB image

Western blot: HeLa, 293T and A549 stained with ARG43975 anti-PRPF31 / RP11 antibody at 0.5 µg/mL dilution.



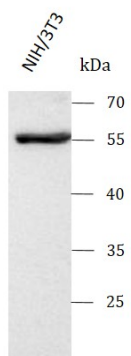
ARG43975 anti-PRPF31 / RP11 antibody FACS image

Flow Cytometry: U937 cells stained with ARG43975 anti-PRPF31 / RP11 antibody (blue) at 1 µg/1x10⁶ cells dilution.



ARG43975 anti-PRPF31 / RP11 antibody WB image

Western blot: C6 stained with ARG43975 anti-PRPF31 / RP11 antibody at 0.5 µg/mL dilution.



ARG43975 anti-PRPF31 / RP11 antibody WB image

Western blot: NIH/3T3 stained with ARG43975 anti-PRPF31 / RP11 antibody at 0.5 µg/mL dilution.