

**ARG43938**  
**anti-OMD antibody**Package: 50 µg  
Store at: -20°C

### Summary

Product Description	Rabbit Polyclonal antibody recognizes OMD
Tested Reactivity	Hu, Ms
Tested Application	ELISA, FACS, WB
Host	Rabbit
Clonality	Polyclonal
Isotype	IgG
Target Name	OMD
Species	Human
Immunogen	Human OMD recombinant protein
Conjugation	Un-conjugated
Alternate Names	OMD; Osteomodulin; SLRR2C ; Osteoadherin; Keratan Sulfate Proteoglycan Osteomodulin; Osteoadherin Proteoglycan; KSPG Osteomodulin; OSAD

### Application Instructions

Application table	Application	Dilution
	ELISA	0.1-0.5 µg/ml
	FACS	1-3 µg/1x10 <sup>6</sup> cells
	WB	0.25-0.5 µg/ml
Application Note	* The dilutions indicate recommended starting dilutions and the optimal dilutions or concentrations should be determined by the scientist.	

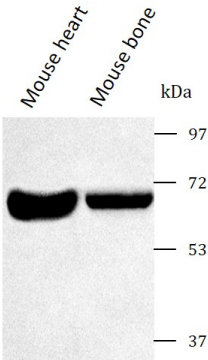
### Properties

Form	Liquid
Purification	Affinity purified with Immunogen.
Buffer	0.9% NaCl, 0.2% Na <sub>2</sub> HPO <sub>4</sub> and 4% Trehalose.
Stabilizer	4% Trehalose
Concentration	0.5 mg/ml
Storage instruction	For continuous use, store undiluted antibody at 2-8°C for up to a week. For long-term storage, aliquot and store at -20°C or below. Storage in frost free freezers is not recommended. Avoid repeated freeze/thaw cycles. Suggest spin the vial prior to opening. The antibody solution should be gently mixed before use.
Note	For laboratory research only, not for drug, diagnostic or other use.

Bioinformation

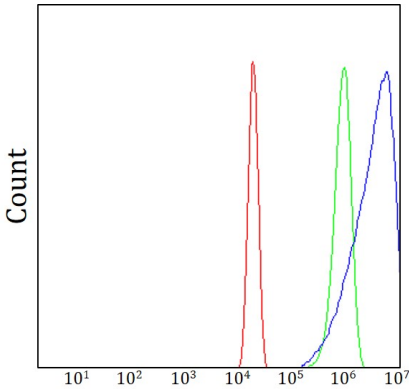
Gene Symbol	OMD
Gene Full Name	Osteomodulin
Background	Predicted to be involved in cell adhesion and regulation of bone mineralization. Located in extracellular exosome.
Function	May be implicated in biomineralization processes. Has a function in binding of osteoblasts via the alpha(V)beta3-integrin.
Calculated Mw	49 kDa
PTM	Disulfide bond, Glycoprotein, Proteoglycan, Sulfation
Cellular Localization	Extracellular matrix, Secreted

Images



ARG43938 anti-OMD antibody WB image

Western blot: Mouse heart and Mouse bone with ARG43938 anti-OMD antibody at 0.5 µg/mL dilution.



ARG43938 anti-OMD antibody FACS image

Flow Cytometry: U20S cells stained with ARG43938 anti-OMD antibody (blue) at 1 µg/1x10<sup>6</sup> cells dilution.