

ARG43905 anti-TM2D3 antibody

Package: 50 µg
Store at: -20°C

Summary

Product Description	Rabbit Polyclonal antibody recognizes TM2D3
Tested Reactivity	Hu
Tested Application	ELISA, FACS, ICC/IF, WB
Host	Rabbit
Clonality	Polyclonal
Isotype	IgG
Target Name	TM2D3
Species	Human
Immunogen	Human TM2D3 recombinant protein
Conjugation	Un-conjugated
Alternate Names	TM2D3; TM2 Domain Containing 3; BLP2; Beta-Amyloid-Binding Protein-Like Protein 2; TM2 Domain-Containing Protein 3; BBP-Like Protein 2; Almondex Homolog; FLJ22604

Application Instructions

Application table	Application	Dilution
	ELISA	0.1-0.5 µg/ml
	FACS	1-3 µg/1x10 ⁶ cells
	ICC/IF	5 µg/ml
	WB	0.25-0.5 µg/ml
Application Note	* The dilutions indicate recommended starting dilutions and the optimal dilutions or concentrations should be determined by the scientist.	

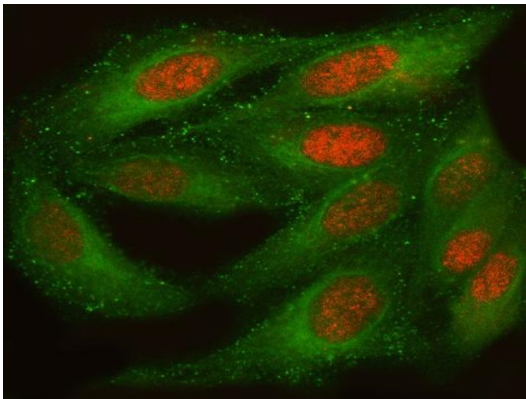
Properties

Form	Liquid
Purification	Affinity purified with Immunogen.
Buffer	0.9% NaCl, 0.2% Na ₂ HPO ₄ and 4% Trehalose.
Stabilizer	4% Trehalose
Concentration	0.5 mg/ml
Storage instruction	For continuous use, store undiluted antibody at 2-8°C for up to a week. For long-term storage, aliquot and store at -20°C or below. Storage in frost free freezers is not recommended. Avoid repeated freeze/thaw cycles. Suggest spin the vial prior to opening. The antibody solution should be gently mixed before use.

Bioinformation

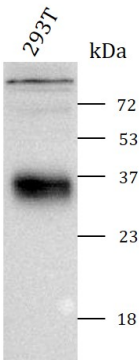
Gene Symbol	TM2D3
Gene Full Name	TM2 Domain Containing 3
Background	The protein encoded by this gene contains a structural module related to that of the seven transmembrane domain G protein-coupled receptor superfamily. This protein has sequence and structural similarities to the beta-amyloid binding protein (BBP), but, unlike BBP, it does not regulate a response to beta-amyloid peptide. This protein may have regulatory roles in cell death or proliferation signal cascades. Several alternatively spliced transcript variants of this gene are described but the full length nature of some variants has not been determined. Multiple polyadenylation sites have been found in this gene.
Calculated Mw	27 kDa
PTM	Glycoprotein
Cellular Localization	Membrane

Images



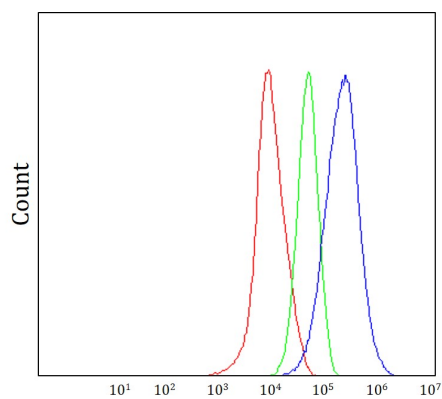
ARG43905 anti-TM2D3 antibody ICC/IF image

Immunofluorescence: HeLa cells stained with ARG43905 anti-TM2D3 antibody at 5 µg/ml dilution.



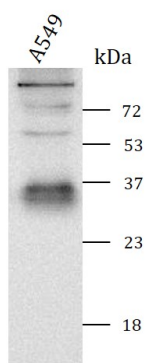
ARG43905 anti-TM2D3 antibody WB image

Western blot: 293T stained with ARG43905 anti-TM2D3 antibody at 0.5 µg/mL dilution.



ARG43905 anti-TM2D3 antibody FACS image

Flow Cytometry: HepG2 cells stained with ARG43905 anti-TM2D3 antibody (blue) at $1\text{ }\mu\text{g}/1\times 10^6$ cells dilution.



ARG43905 anti-TM2D3 antibody WB image

Western blot: A549 stained with ARG43905 anti-TM2D3 antibody at $0.5\text{ }\mu\text{g}/\text{mL}$ dilution.