

## ARG43895 anti-PNPLA6 / NTE antibody

Package: 50 µg  
Store at: -20°C

### Summary

Product Description	Rabbit Polyclonal antibody recognizes PNPLA6 / NTE
Tested Reactivity	Hu
Tested Application	ELISA, FACS, ICC/IF, WB
Host	Rabbit
Clonality	Polyclonal
Isotype	IgG
Target Name	PNPLA6 / NTE
Species	Human
Immunogen	Human PNPLA6 / NTE recombinant protein
Conjugation	Un-conjugated
Alternate Names	PNPLA6; Patatin Like Phospholipase Domain Containing 6; NTE; Neuropathy Target Esterase; IPLA2delta; SPG39; Sws; Patatin-Like Phospholipase Domain-Containing Protein 6; EC 3.1.1.5; Patatin-Like Phospholipase Domain Containing 6; NTEMND; BNHS; LNMS; OMCS

### Application Instructions

Application table	Application	Dilution
	ELISA	0.1-0.5 µg/ml
	FACS	1-3 µg/1x10 <sup>6</sup>
	ICC/IF	5 µg/ml
	WB	0.25-0.5 µg/ml
Application Note	* The dilutions indicate recommended starting dilutions and the optimal dilutions or concentrations should be determined by the scientist.	

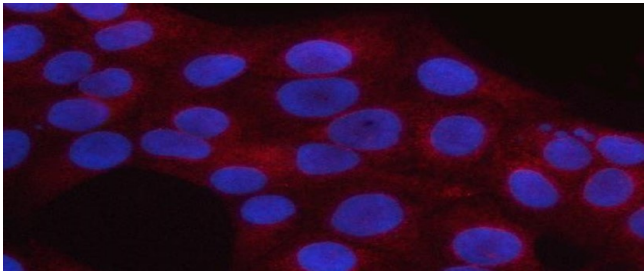
### Properties

Form	Liquid
Purification	Affinity purified with Immunogen.
Buffer	0.9% NaCl, 0.2% Na <sub>2</sub> HPO <sub>4</sub> and 4% Trehalose.
Stabilizer	4% Trehalose
Concentration	0.5 mg/ml
Storage instruction	For continuous use, store undiluted antibody at 2-8°C for up to a week. For long-term storage, aliquot and store at -20°C or below. Storage in frost free freezers is not recommended. Avoid repeated freeze/thaw cycles. Suggest spin the vial prior to opening. The antibody solution should be gently mixed before use.

Bioinformation

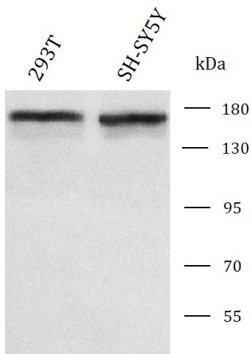
Gene Symbol	PNPLA6
Gene Full Name	Patatin Like Phospholipase Domain Containing 6
Background	This gene encodes a phospholipase that deacetylates intracellular phosphatidylcholine to produce glycerophosphocholine. It is thought to function in neurite outgrowth and process elongation during neuronal differentiation. The protein is anchored to the cytoplasmic face of the endoplasmic reticulum in both neurons and non-neuronal cells. Mutations in this gene result in autosomal recessive spastic paraplegia, and the protein is the target for neurodegeneration induced by organophosphorus compounds and chemical warfare agents. Multiple transcript variants encoding different isoforms have been found for this gene.
Function	Phospholipase B that deacylates intracellular phosphatidylcholine (PtdCho), generating glycerophosphocholine (GroPtdCho). This deacylation occurs at both sn-2 and sn-1 positions of PtdCho. Catalyzes the hydrolysis of several naturally occurring membrane-associated lipids.
Calculated Mw	151 kDa
PTM	Glycoprotein, Phosphoprotein
Cellular Localization	Membrane

Images



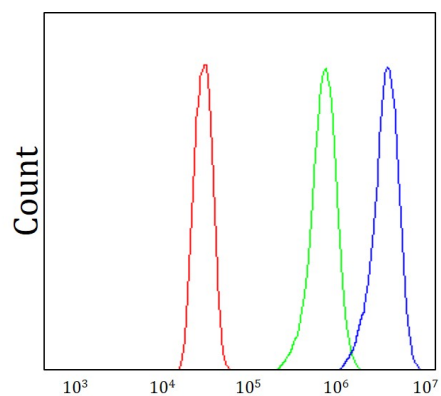
ARG43895 anti-PNPLA6 / NTE antibody ICC/IF image

Immunofluorescence: U2OS cells stained with ARG43895 anti-PNPLA6 / NTE antibody at 5 µg/ml dilution.



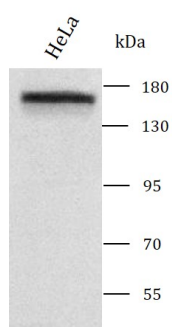
ARG43895 anti-PNPLA6 / NTE antibody WB image

Western blot: 293T and SH-SY5Y stained with ARG43895 anti-PNPLA6 / NTE antibody at 0.5 µg/mL dilution.



ARG43895 anti-PNPLA6 / NTE antibody FACS image

Flow Cytometry: SiHa cells stained with ARG43895 anti-PNPLA6 / NTE antibody (blue) at  $1 \mu\text{g}/1 \times 10^6$  cells dilution.



ARG43895 anti-PNPLA6 / NTE antibody WB image

Western blot: HeLa stained with ARG43895 anti-PNPLA6 / NTE antibody at  $0.5 \mu\text{g}/\text{mL}$  dilution.