

## ARG43880 anti-Recoverin antibody

Package: 50 µg  
Store at: -20°C

### Summary

Product Description	Rabbit Polyclonal antibody recognizes Recoverin
Tested Reactivity	Hu
Tested Application	ELISA, IHC-P, WB
Host	Rabbit
Clonality	Polyclonal
Isotype	IgG
Target Name	Recoverin
Species	Human
Immunogen	Human Recoverin recombinant protein
Conjugation	Un-conjugated
Alternate Names	RCVRN; Recoverin; RCV1; Cancer-Associated Retinopathy Protein; Cancer Associated Retinopathy Antigen; Protein CAR

### Application Instructions

Application table	Application	Dilution
	ELISA	0.1-0.5 µg/ml
	IHC-P	2-5 µg/ml
	WB	0.25-0.5 µg/ml
Application Note	* The dilutions indicate recommended starting dilutions and the optimal dilutions or concentrations should be determined by the scientist.	

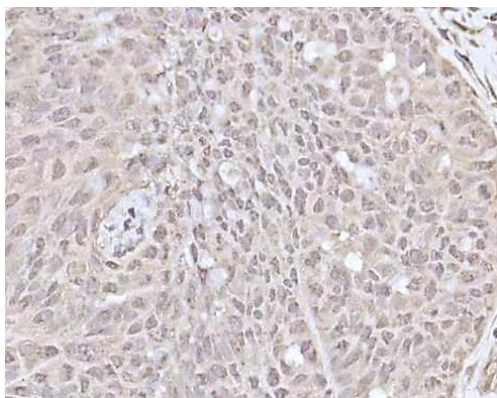
### Properties

Form	Liquid
Purification	Affinity purified with Immunogen.
Buffer	0.9% NaCl, 0.2% Na <sub>2</sub> HPO <sub>4</sub> and 4% Trehalose.
Stabilizer	4% Trehalose
Concentration	0.5 mg/ml
Storage instruction	For continuous use, store undiluted antibody at 2-8°C for up to a week. For long-term storage, aliquot and store at -20°C or below. Storage in frost free freezers is not recommended. Avoid repeated freeze/thaw cycles. Suggest spin the vial prior to opening. The antibody solution should be gently mixed before use.
Note	For laboratory research only, not for drug, diagnostic or other use.

## Bioinformation

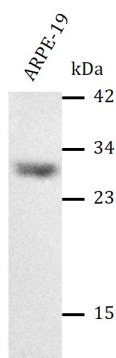
Gene Symbol	RCVRN
Gene Full Name	Recoverin
Background	This gene encodes a member of the recoverin family of neuronal calcium sensors. The encoded protein contains three calcium-binding EF-hand domains and may prolong the termination of the phototransduction cascade in the retina by blocking the phosphorylation of photo-activated rhodopsin. Recoverin may be the antigen responsible for cancer-associated retinopathy.
Function	Plays a role in scotopic vision/enhances vision in dim light by enhancing signal transfer between rod photoreceptors and rod bipolar cells
Calculated Mw	23 kDa
PTM	Disulfide bond; Lipoprotein; Myristate; Oxidation
Cellular Localization	Cell projection; Membrane

## Images



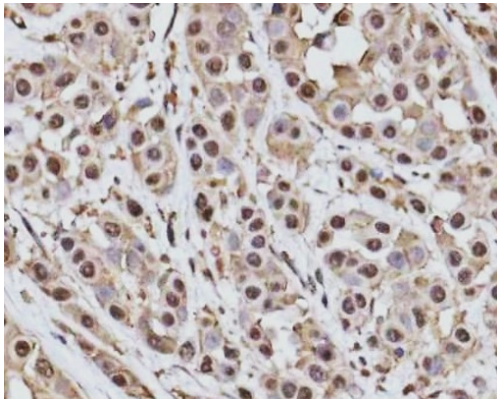
ARG43880 anti-Recoverin antibody IHC-P image

Immunohistochemistry: Human ovarian cancer stained with ARG43880 anti-Recoverin antibody at 2 µg/ml dilution.



ARG43880 anti-Recoverin antibody WB image

Western blot: ARPE-19 stained with ARG43880 anti-Recoverin antibody at 0.5 µg/mL dilution.



ARG43880 anti-Recoverin antibody IHC-P image

Immunohistochemistry: Human breast cancer stained with ARG43880 anti-Recoverin antibody at 2 µg/ml dilution.