

ARG43849 anti-Semaphorin 4D antibody [133-1C6] (FITC)

Package: 100 tests
Store at: 4°C

Summary

| | |
|---------------------|---|
| Product Description | FITC-conjugated Mouse Monoclonal antibody recognizes Semaphorin 4D. |
| Tested Reactivity | Hu |
| Tested Application | FACS |
| Host | Mouse |
| Clonality | Monoclonal |
| Clone | 133-1C6 |
| Isotype | IgM |
| Target Name | Semaphorin 4D |
| Species | Human |
| Immunogen | PHA stimulated human PBL |
| Conjugation | FITC |
| Alternate Names | SEMA4D; Semaphorin 4D; CD100; C9orf164; Coll-4; SEMAJ; Sema Domain, Immunoglobulin Domain (Ig), Transmembrane Domain (TM) And Short Cytoplasmic Domain, (Semaphorin) 4D; Semaphorin-4D; FLJ39737; BB18; GR3; A8; Sema Domain, Immunoglobulin Domain (Ig), Transmembrane Domain (TM) And Short Cytoplasmic Domain, 4D; Chromosome 9 Open Reading Frame 164; CD100 Antigen; M-Sema G; M-Sema-G; COLL4 |

Application Instructions

| | | |
|-------------------|--|------------------------------|
| Application table | Application | Dilution |
| | FACS | 4 µl / 10 ⁶ cells |
| Application Note | * The dilutions indicate recommended starting dilutions and the optimal dilutions or concentrations should be determined by the scientist. | |

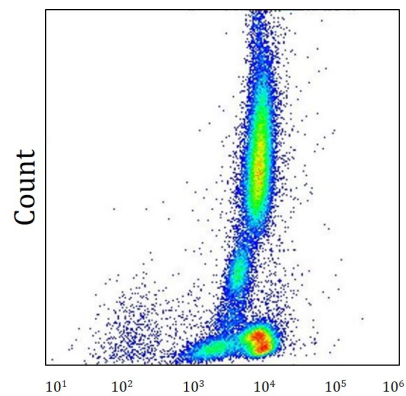
Properties

| | |
|---------------------|--|
| Form | Liquid |
| Purification | Protein-A affinity chromatography |
| Buffer | PBS (pH 8.0) and 15 mM Sodium azide |
| Preservative | 15 mM Sodium azide |
| Storage instruction | Aliquot and store in the dark at 4°C. Keep protected from prolonged exposure to light. Do not freeze. Suggest spin the vial prior to opening. The antibody solution should be gently mixed before use. |

Bioinformation

| | |
|-----------------------|---|
| Gene Symbol | SEMA4D |
| Gene Full Name | Semaphorin 4D |
| Background | Enables identical protein binding activity; semaphorin receptor binding activity; and transmembrane signaling receptor activity. Involved in several processes, including positive regulation of phosphatidylinositol 3-kinase signaling; regulation of neuron projection development; and regulation of phosphate metabolic process. Is integral component of plasma membrane. |
| Function | Induces endothelial cell migration through the activation of PTK2B/PYK2, SRC, and the phosphatidylinositol 3-kinase-AKT pathway. |
| PTM | Disulfide bond, Glycoprotein, Phosphoprotein |
| Cellular Localization | Cell membrane |

Images



ARG43849 anti-Semaphorin 4D antibody [133-1C6] (FITC) FACS image

Flow Cytometry: Human whole blood stained with ARG43849 anti-Semaphorin 4D antibody [133-1C6] (FITC) at 5 µg/ml.
