

ARG43825 anti-GSK3 beta phospho (Ser9) antibody

Package: 100 µl
Store at: -20°C

Summary

Product Description	Rabbit Polyclonal antibody recognizes GSK3 beta phospho (Ser9)
Tested Reactivity	Hu, Ms, Rat
Tested Application	ICC/IF, IHC-P, WB
Specificity	Human, Mouse, Rat
Host	Rabbit
Clonality	Polyclonal
Isotype	IgG
Target Name	GSK3 beta
Species	Human
Immunogen	Synthetic phosphopeptide around Ser9 of human GSK3 beta
Conjugation	Un-conjugated
Alternate Names	GSK3B; Glycogen Synthase Kinase 3 Beta; Serine/Threonine-Protein Kinase GSK3B; Glycogen Synthase Kinase-3 Beta; EC 2.7.11.26; GSK-3 Beta; EC 2.7.11.1; EC 2.7.11

Application Instructions

Application table	Application	Dilution
	ICC/IF	1:50-1:200
	IHC-P	1:50-1:100
	WB	1:500-1:1000
Application Note	* The dilutions indicate recommended starting dilutions and the optimal dilutions or concentrations should be determined by the scientist.	
Observed Size	47 kDa	

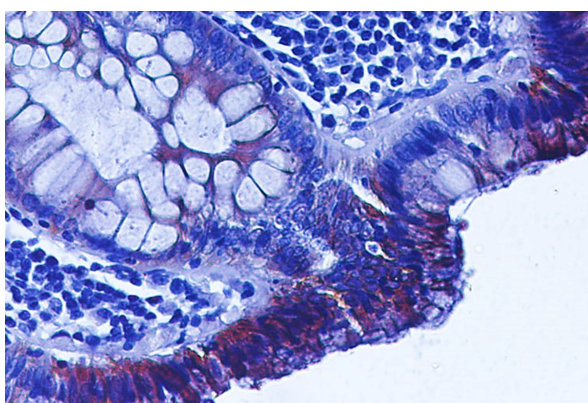
Properties

Form	Liquid
Purification	Affinity Purified
Buffer	Tris-Glycine, 0.15M NaCl, 40% Glycerol, 0.01% Sodium azide and 0.05% BSA
Preservative	0.01% Sodium azide
Stabilizer	40% Glycerol and 0.05% BSA
Storage instruction	For continuous use, store undiluted antibody at 2-8°C for up to a week. For long-term storage, aliquot and store at -20°C or below. Storage in frost free freezers is not recommended. Avoid repeated freeze/thaw cycles. Suggest spin the vial prior to opening. The antibody solution should be gently mixed before use.

Bioinformation

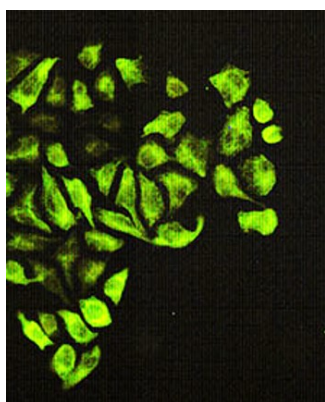
Gene Symbol	GSK3B
Gene Full Name	Glycogen Synthase Kinase 3 Beta
Background	The protein encoded by this gene is a serine-threonine kinase belonging to the glycogen synthase kinase subfamily. It is a negative regulator of glucose homeostasis and is involved in energy metabolism, inflammation, ER-stress, mitochondrial dysfunction, and apoptotic pathways. Defects in this gene have been associated with Parkinson disease and Alzheimer disease. [provided by RefSeq, Aug 2017]
Function	Constitutively active protein kinase that acts as a negative regulator in the hormonal control of glucose homeostasis, Wnt signaling and regulation of transcription factors and microtubules, by phosphorylating and inactivating glycogen synthase (GYS1 or GYS2), EIF2B, CTNNB1/beta-catenin, APC, AXIN1, DPYSL2/CRMP2, JUN, NFATC1/NFATC, MAPT/TAU and MACF1. [UniProt]
Calculated Mw	47 kDa
PTM	ADP-ribosylation, Phosphoprotein. [UniProt]
Cellular Localization	Cell membrane, Cytoplasm, Membrane, Nucleus. [UniProt]

Images



ARG43825 anti-GSK3 beta phospho (Ser9) antibody IHC-P image

Immunohistochemistry: Paraffin-embedded Human colon stained with ARG43825 anti-GSK3 beta phospho (Ser9) antibody at 1:50 dilution.



ARG43825 anti-GSK3 beta phospho (Ser9) antibody ICC/IF image

Immunofluorescence: HeLa cells stained with ARG43825 anti-GSK3 beta phospho (Ser9) antibody at 1:50 dilution.

ARG43825 anti-GSK3 beta phospho (Ser9) antibody WB image

mmunofluorescence: K562, C6, 3T3 and HeLa cells stained with ARG43825 anti-GSK3 beta phospho (Ser9) antibody at 1:500 dilution.

