

## ARG43816 anti-CD62P / P-Selectin antibody

Package: 50 µg  
Store at: -20°C

### Summary

Product Description	Rabbit Polyclonal antibody recognizes CD62P / P-Selectin.
Tested Reactivity	Ms, Rat
Tested Application	ELISA, FACS, ICC/IF, IHC-P, WB
Host	Rabbit
Clonality	Polyclonal
Isotype	IgG
Target Name	CD62P / P-Selectin
Immunogen	Recombinant protein around aa. 40-270 of mouse CD62P.
Conjugation	Un-conjugated
Alternate Names	SELP; Selectin P; PADGEM; GMP140; CD62P; CD62; PSEL; GRMP; Platelet Activation Dependent Granule-External Membrane Protein; Selectin P Granule Membrane Protein 140kDa; Antigen CD62; Leukocyte Endothelial Cell Adhesion Molecule 3; CD62 Antigen Like Family Member P; Granule Membrane Protein 140kDa; Granule Membrane Protein 140; P Selectin; GMP 140; LECAM3; Selectin P Granule Membrane Protein 140kD; Antigen CD62 Platelet Alpha-Granule Membrane Protein; Granulocyte Membrane Protein; CD62P Antigen; Antigen CD62; GMRP

### Properties

Form	Liquid
Purification	Affinity purification with immunogen.
Buffer	0.9% NaCl, 0.2% Na <sub>2</sub> HPO <sub>4</sub> , 0.05% Sodium azide and 4% Trehalose.
Preservative	0.05% Sodium azide
Stabilizer	4% Trehalose
Concentration	0.5 mg/ml
Storage instruction	For continuous use, store undiluted antibody at 2-8°C for up to a week. For long-term storage, aliquot and store at -20°C or below. Storage in frost free freezers is not recommended. Avoid repeated freeze/thaw cycles. Suggest spin the vial prior to opening. The antibody solution should be gently mixed before use.
Note	For laboratory research only, not for drug, diagnostic or other use.

### Bioinformation

Gene Symbol	SELP
Gene Full Name	Selectin P
Background	This gene encodes a 140 kDa protein that is stored in the alpha-granules of platelets and Weibel-Palade bodies of endothelial cells. This protein redistributes to the plasma membrane during platelet activation and degranulation and mediates the interaction of activated endothelial cells or platelets

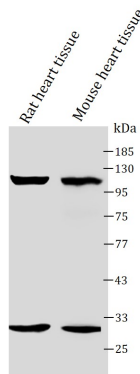
with leukocytes. The membrane protein is a calcium-dependent receptor that binds to sialylated forms of Lewis blood group carbohydrate antigens on neutrophils and monocytes. Alternative splice variants may occur but are not well documented.

Function	Ca <sup>2+</sup> -dependent receptor for myeloid cells that binds to carbohydrates on neutrophils and monocytes. Mediates the interaction of activated endothelial cells or platelets with leukocytes. The ligand recognized is sialyl-Lewis X. Mediates rapid rolling of leukocyte rolling over vascular surfaces during the initial steps in inflammation through interaction with SELPLG. [UniProt]
Calculated Mw	~ 140 kDa
PTM	Disulfide bond, Glycoprotein, Lipoprotein, Palmitate
Cellular Localization	Cell membrane

## Images

ARG43816 anti-CD62P / P-Selectin antibody WB image

Western blot: Mouse heart and Rat heart cell tissue stained with ARG43816 anti-CD62P / P-Selectin antibody at 1:1000 dilution.



ARG43816 anti-CD62P / P-Selectin antibody FACS image

Flow Cytometry: RAW264.7 cells stained with ARG43816 anti-CD62P / P-Selectin antibody at 1 :50 dilution.

