

## ARG43799 anti-KMT4 / Dot1L antibody

Package: 100 µl  
Store at: -20°C

### Summary

Product Description	Rabbit Polyclonal antibody recognizes KMT4 / Dot1L
Tested Reactivity	Hu, Ms
Tested Application	IHC-P, WB
Host	Rabbit
Clonality	Polyclonal
Isotype	IgG
Target Name	KMT4 / Dot1L
Species	Human
Immunogen	Recombinant fusion protein corresponding to Human KMT4 / Dot1L.
Conjugation	Un-conjugated
Alternate Names	KMT4; DOT1; Histone-lysine N-methyltransferase, H3 lysine-79 specific; H3-K79-HMTase; DOT1-like protein; Lysine N-methyltransferase 4; EC 2.1.1.43; Histone H3-K79 methyltransferase

### Application Instructions

Application table	Application	Dilution
	IHC-P	1:50 - 1:100
	WB	1:500 - 1:1000
Application Note	* The dilutions indicate recommended starting dilutions and the optimal dilutions or concentrations should be determined by the scientist.	
Positive Control	HeLa; Mouse testis	
Observed Size	~180 kDa	

### Properties

Form	Liquid
Purification	Affinity purified.
Buffer	50 mM Tris-Glycine (pH 7.4), 150 mM NaCl, 0.01% Sodium azide, 40% Glycerol and 0.05% BSA.
Preservative	0.01% Sodium azide
Stabilizer	40% Glycerol and 0.05% BSA
Concentration	Batch dependent
Storage instruction	For continuous use, store undiluted antibody at 2-8°C for up to a week. For long-term storage, aliquot and store at -20°C. Storage in frost free freezers is not recommended. Avoid repeated freeze/thaw cycles. Suggest spin the vial prior to opening. The antibody solution should be gently mixed before use.

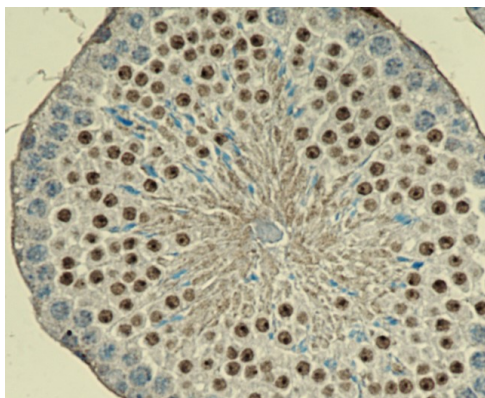
**Note**

For laboratory research only, not for drug, diagnostic or other use.

## Bioinformation

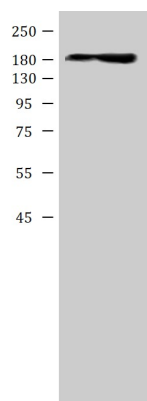
Gene Symbol	DOT1L
Gene Full Name	DOT1-like histone H3K79 methyltransferase
Background	The protein encoded by this gene is a histone methyltransferase that methylates lysine-79 of histone H3. It is inactive against free core histones, but shows significant histone methyltransferase activity against nucleosomes. [provided by RefSeq, Aug 2011]
Function	Histone methyltransferase. Methylates 'Lys-79' of histone H3. Nucleosomes are preferred as substrate compared to free histones. Binds to DNA. [UniProt]
Calculated Mw	165 kDa
PTM	Phosphoprotein
Cellular Localization	Nucleus. [UniProt]

## Images



ARG43799 anti-KMT4 / Dot1L antibody IHC-P image

Immunohistochemistry: Paraffin-embedded Mouse testis tissue stained with ARG43799 anti-KMT4 / Dot1L antibody.



ARG43799 anti-KMT4 / Dot1L antibody WB image

Western blot: 25 µg of HeLa cells stained with ARG43799 anti-KMT4 / Dot1L antibody at 1:1000 dilution.



#### ARG43799 anti-KMT4 / Dot1L antibody WB image

Western blot: 25 µg of Raw263.7 cell lysate stained with ARG43799 anti-KMT4 / Dot1L antibody at 1:1000 dilution.