

## ARG43689 anti-APC4 antibody

Package: 100 µl  
Store at: -20°C

### Summary

Product Description	Rabbit Polyclonal antibody recognizes APC4
Tested Reactivity	Hu
Predict Reactivity	Ms
Tested Application	IHC-P, WB
Host	Rabbit
Clonality	Polyclonal
Isotype	IgG
Target Name	APC4
Species	Human
Immunogen	Synthetic peptide corresponding to Human APC4.
Conjugation	Un-conjugated
Alternate Names	Anaphase-promoting complex subunit 4; Cyclosome subunit 4; APC4

### Application Instructions

Application table	Application	Dilution
	IHC-P	1:50 - 1:100
	WB	1:500 - 1:1000
Application Note	* The dilutions indicate recommended starting dilutions and the optimal dilutions or concentrations should be determined by the scientist.	
Positive Control	HepG2	
Observed Size	95-100 kDa	

### Properties

Form	Liquid
Purification	Affinity purified.
Buffer	PBS, 0.05% Sodium azide and 40% Glycerol.
Preservative	0.05% Sodium azide
Stabilizer	40% Glycerol
Concentration	Batch dependent
Storage instruction	For continuous use, store undiluted antibody at 2-8°C for up to a week. For long-term storage, aliquot and store at -20°C or below. Storage in frost free freezers is not recommended. Avoid repeated freeze/thaw cycles. Suggest spin the vial prior to opening. The antibody solution should be gently mixed

before use.

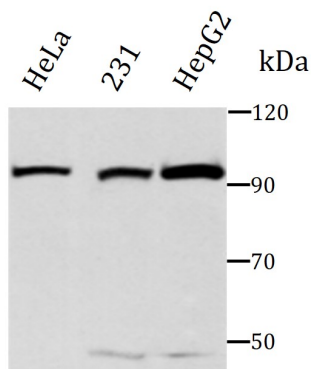
#### Note

For laboratory research only, not for drug, diagnostic or other use.

## Bioinformation

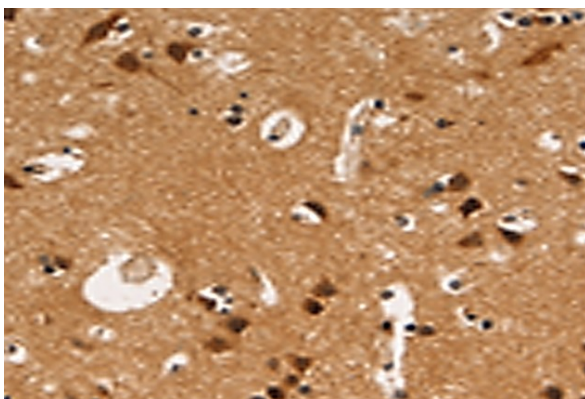
Gene Symbol	ANAPC4
Gene Full Name	anaphase promoting complex subunit 4
Background	A large protein complex, termed the anaphase-promoting complex (APC), or the cyclosome, promotes metaphase-anaphase transition by ubiquitinating its specific substrates such as mitotic cyclins and anaphase inhibitor, which are subsequently degraded by the 26S proteasome. Biochemical studies have shown that the vertebrate APC contains eight subunits. The composition of the APC is highly conserved in organisms from yeast to humans. The exact function of this gene product is not known. Two transcript variants encoding different isoforms have been found for this gene. [provided by RefSeq, Nov 2013]
Function	Component of the anaphase promoting complex/cyclosome (APC/C), a cell cycle-regulated E3 ubiquitin ligase that controls progression through mitosis and the G1 phase of the cell cycle. The APC/C complex acts by mediating ubiquitination and subsequent degradation of target proteins: it mainly mediates the formation of 'Lys-11'-linked polyubiquitin chains and, to a lower extent, the formation of 'Lys-48'- and 'Lys-63'-linked polyubiquitin chains. [UniProt]
Calculated Mw	92 kDa
PTM	Isopeptide bond; Phosphoprotein; Ubl conjugation
Cellular Localization	Nucleus [UniProt]

## Images



ARG43689 anti-APC4 antibody WB image

Western blot: HeLa, 231 and HepG2 cells lysates stained with ARG43689 anti-APC4 antibody at 1:1000 dilution.



ARG43689 anti-APC4 antibody IHC-P image

Immunohistochemistry: Formalin-fixed and paraffin-embedded Human brain stained with ARG43689 anti-APC4 antibody at 1:75 dilution. Antigen Retrieval: Heat mediated was performed using sodium Citrate buffer (pH 6.0).