

ARG43677 anti-NSE / Neuron Specific Enolase antibody

Package: 100 µl
Store at: -20°C

Summary

Product Description	Rabbit Polyclonal antibody recognizes NSE / Neuron Specific Enolase
Tested Reactivity	Hu, Ms, Rat
Tested Application	FACS, ICC/IF, IHC-P, WB
Host	Rabbit
Clonality	Polyclonal
Isotype	IgG
Target Name	NSE / Neuron Specific Enolase
Species	Human
Immunogen	Synthetic peptide corresponding to Human NSE / Neuron Specific Enolase.
Conjugation	Un-conjugated
Alternate Names	Neural enolase; NSE; Enolase 2; Gamma-enolase; 2-phospho-D-glycerate hydro-lyase; HEL-S-279; Neuron-specific enolase; EC 4.2.1.11

Application Instructions

Application table	Application	Dilution
	FACS	1:50 - 1:100
	ICC/IF	1:50 - 1:200
	IHC-P	1:50 - 1:100
	WB	1:500 - 1:1000
Application Note	* The dilutions indicate recommended starting dilutions and the optimal dilutions or concentrations should be determined by the scientist.	
Observed Size	~ 48 kDa	

Properties

Form	Liquid
Purification	Affinity purified.
Buffer	50 mM Tris-Glycine (pH 7.4), 150 mM NaCl, 0.01% Sodium azide, 40% Glycerol and 0.05% BSA.
Preservative	0.01% Sodium azide
Stabilizer	40% Glycerol and 0.05% BSA
Concentration	Batch dependent
Storage instruction	For continuous use, store undiluted antibody at 2-8°C for up to a week. For long-term storage, aliquot and store at -20°C. Storage in frost free freezers is not recommended. Avoid repeated freeze/thaw

cycles. Suggest spin the vial prior to opening. The antibody solution should be gently mixed before use.

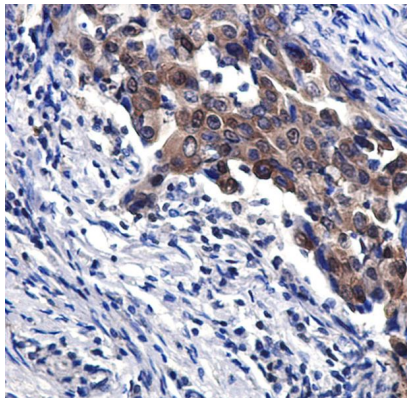
Note

For laboratory research only, not for drug, diagnostic or other use.

Bioinformation

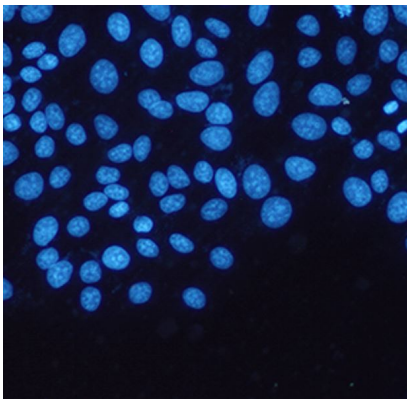
Gene Symbol	ENO2
Gene Full Name	enolase 2 (gamma, neuronal)
Background	This gene encodes one of the three enolase isoenzymes found in mammals. This isoenzyme, a homodimer, is found in mature neurons and cells of neuronal origin. A switch from alpha enolase to gamma enolase occurs in neural tissue during development in rats and primates. [provided by RefSeq, Jul 2008]
Function	Has neurotrophic and neuroprotective properties on a broad spectrum of central nervous system (CNS) neurons. Binds, in a calcium-dependent manner, to cultured neocortical neurons and promotes cell survival (By similarity). [UniProt]
Calculated Mw	47 kDa
PTM	Acetylation; Hydroxylation; Isopeptide bond; Phosphoprotein; Ubl conjugation
Cellular Localization	Cytoplasm. Cell membrane. Note=Can translocate to the plasma membrane in either the homodimeric (alpha/alpha) or heterodimeric (alpha/gamma) form. [UniProt]

Images



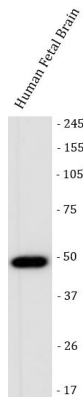
ARG43677 anti-NSE / Neuron Specific Enolase antibody IHC-P image

Immunohistochemistry: Human lung cancer stained with ARG43677 anti-NSE / Neuron Specific Enolase antibody.



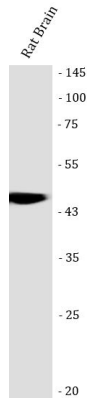
ARG43677 anti-NSE / Neuron Specific Enolase antibody ICC/IF image

Immunofluorescence: HeLa stained with ARG43677 anti-NSE / Neuron Specific Enolase antibody.



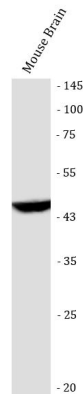
ARG43677 anti-NSE / Neuron Specific Enolase antibody WB image

Western blot: Human Fetal Brain stained with ARG43677 anti-NSE / Neuron Specific Enolase antibody.



ARG43677 anti-NSE / Neuron Specific Enolase antibody WB image

Western blot: Rat brain stained with ARG43677 anti-NSE / Neuron Specific Enolase antibody.



ARG43677 anti-NSE / Neuron Specific Enolase antibody WB image

Western blot: Mouse brain stained with ARG43677 anti-NSE / Neuron Specific Enolase antibody.