

ARG43660 anti-APC11 antibody

Package: 100 µl
Store at: -20°C

Summary

Product Description	Rabbit Polyclonal antibody recognizes APC11
Tested Reactivity	Hu, Ms
Tested Application	ICC/IF, IHC-P, WB
Host	Rabbit
Clonality	Polyclonal
Isotype	IgG
Target Name	APC11
Species	Human
Immunogen	Recombinant fragment within a.a. 1-90 of Human APC11.
Conjugation	Un-conjugated
Alternate Names	Hepatocellular carcinoma-associated RING finger protein; APC11; Cyclosome subunit 11; Apc11p; HSPC214; Anaphase-promoting complex subunit 11

Application Instructions

Application table	Application	Dilution
	ICC/IF	1:50 - 1:200
	IHC-P	1:50 - 1:200
	WB	1:500 - 1:2000
Application Note	* The dilutions indicate recommended starting dilutions and the optimal dilutions or concentrations should be determined by the scientist.	
Positive Control	Mouse heart	
Observed Size	15-20 kDa	

Properties

Form	Liquid
Purification	Affinity purified.
Buffer	PBS, 0.01% Thiomersal and 50% Glycerol.
Preservative	0.01% Thiomersal
Stabilizer	50% Glycerol
Concentration	Batch dependent
Storage instruction	For continuous use, store undiluted antibody at 2-8°C for up to a week. For long-term storage, aliquot and store at -20°C or below. Storage in frost free freezers is not recommended. Avoid repeated

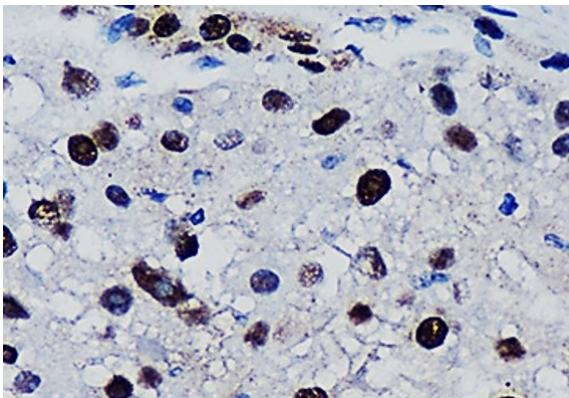
freeze/thaw cycles. Suggest spin the vial prior to opening. The antibody solution should be gently mixed before use.

Note For laboratory research only, not for drug, diagnostic or other use.

Bioinformation

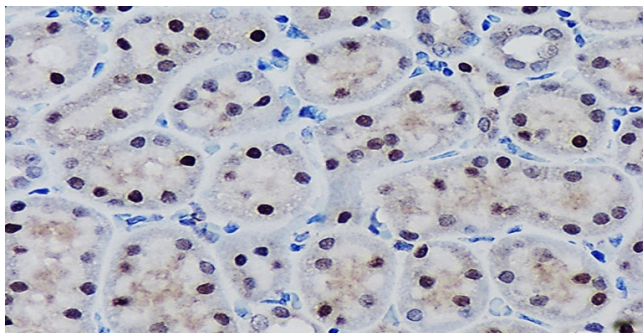
Gene Symbol	ANAPC11
Gene Full Name	anaphase promoting complex subunit 11
Background	Enables cullin family protein binding activity and ubiquitin-ubiquitin ligase activity. Contributes to ubiquitin-protein transferase activity. Involved in protein K11-linked ubiquitination. Located in nucleolus and nucleoplasm. Part of anaphase-promoting complex. [provided by Alliance of Genome Resources, Apr 2022]
Function	Together with the cullin protein ANAPC2, constitutes the catalytic component of the anaphase promoting complex/cyclosome (APC/C), a cell cycle-regulated E3 ubiquitin ligase that controls progression through mitosis and the G1 phase of the cell cycle. The APC/C complex acts by mediating ubiquitination and subsequent degradation of target proteins: it mainly mediates the formation of 'Lys-11'-linked polyubiquitin chains and, to a lower extent, the formation of 'Lys-48'- and 'Lys-63'-linked polyubiquitin chains. May recruit the E2 ubiquitin-conjugating enzymes to the complex. [UniProt]
Research Area	Cell Biology and Cellular Response antibody
Calculated Mw	10 kDa
PTM	Auto-ubiquitinated.
Cellular Localization	Cytoplasm; Nucleus [UniProt]

Images



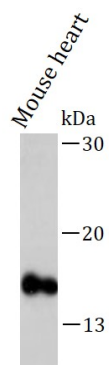
ARG43660 anti-APC11 antibody IHC-P image

Immunohistochemistry: Formalin-fixed and paraffin-embedded Human Liver tissue stained with ARG43660 anti-APC11 antibody at 1:150 dilution. Antigen Retrieval: Heat mediated was performed using 10 mM citrate buffer pH 6.0



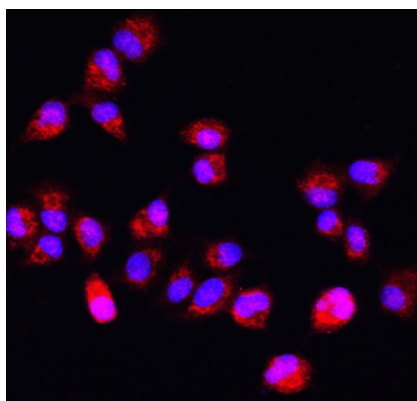
ARG43660 anti-APC11 antibody IHC-P image

Immunohistochemistry: Formalin-fixed and paraffin-embedded Mouse Kidney tissue stained with ARG43660 anti-APC11 antibody at 1:150 dilution. Antigen Retrieval: Heat mediated was performed using 10 mM citrate buffer pH 6.0



ARG43660 anti-APC11 antibody WB image

Western blot: Mouse Heart tissue stained with ARG43660 anti-APC11 antibody at 1:1000 dilution.



ARG43660 anti-APC11 antibody ICC/IF image

Immunofluorescence: A549 cells stained with ARG43660 anti-APC11 antibody at 1:300 and 4°C. DAPI (blue) was used as the nuclear counter stain.