

ARG43629 anti-ATG9A antibody

Package: 50 µg
Store at: -20°C

Summary

| | |
|---------------------|---|
| Product Description | Rabbit Polyclonal antibody recognizes ATG9A |
| Tested Reactivity | Hu, Ms, Rat |
| Tested Application | FACS, IHC-P, WB |
| Host | Rabbit |
| Clonality | Polyclonal |
| Isotype | IgG |
| Target Name | ATG9A |
| Species | Human |
| Immunogen | Recombinant fragment within a.a. 20-200 of Human ATG9A. |
| Conjugation | Un-conjugated |
| Alternate Names | APG9L1; MGD3208; APG9-like 1; mATG9; Autophagy-related protein 9A |

Application Instructions

| | | |
|-------------------|--|------------------------------------|
| Application table | Application | Dilution |
| | FACS | 1 - 3 µg / 1X10 ⁶ cells |
| | IHC-P | 1:100 - 1:250 |
| | WB | 1:500 - 1:2000 |
| Application Note | IHC-P: Antigen retrieval: Heat mediated antigen retrieval was performed in EDTA (pH8.0) buffer * The dilutions indicate recommended starting dilutions and the optimal dilutions or concentrations should be determined by the scientist. | |
| Positive Control | A375 | |
| Observed Size | 94-120 kDa | |

Properties

| | |
|---------------------|--|
| Form | Liquid |
| Purification | Affinity purification with immunogen. |
| Buffer | 0.9% NaCl, 0.2% Na ₂ HPO ₄ and 4% Trehalose. |
| Stabilizer | 4% Trehalose |
| Concentration | 0.5 mg/ml |
| Storage instruction | For continuous use, store undiluted antibody at 2-8°C for up to a week. For long-term storage, aliquot and store at -20°C or below. Storage in frost free freezers is not recommended. Avoid repeated freeze/thaw cycles. Suggest spin the vial prior to opening. The antibody solution should be gently mixed before use. |

Bioinformation

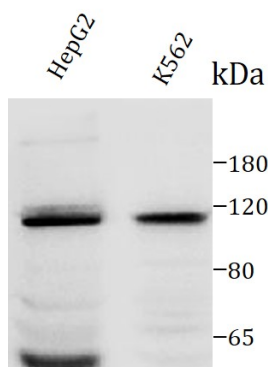
| | |
|-----------------------|---|
| Gene Symbol | ATG9A |
| Gene Full Name | autophagy related 9A |
| Background | Acts upstream of or within autophagosome assembly. Located in endosome; phagophore assembly site; and trans-Golgi network. [provided by Alliance of Genome Resources, Apr 2022] |
| Function | Involved in autophagy and cytoplasm to vacuole transport (Cvt) vesicle formation. Plays a key role in the organization of the preautophagosomal structure/phagophore assembly site (PAS), the nucleating site for formation of the sequestering vesicle. Cycles between a juxta-nuclear trans-Golgi network compartment and late endosomes. Nutrient starvation induces accumulation on autophagosomes. Starvation-dependent trafficking requires ULK1, ATG13 and SUPT20H. [UniProt] |
| Research Area | Cancer antibody; Cell Biology and Cellular Response antibody; Cell Death antibody; Metabolism antibody; Neuroscience antibody |
| Calculated Mw | 94 kDa |
| PTM | Acetylation; Glycoprotein; Phosphoprotein |
| Cellular Localization | Cytoplasmic vesicle, autophagosome membrane; Multi-pass membrane protein. Golgi apparatus, trans-Golgi network membrane; Multi-pass membrane protein. Late endosome membrane; Multi-pass membrane protein. Endoplasmic reticulum membrane; Multi-pass membrane protein. Note=Under amino acid starvation or rapamycin treatment, redistributes from a juxtanuclear clustered pool to a dispersed peripheral cytosolic pool. The starvation- induced redistribution depends on ULK1, ATG13, as well as SH3GLB1 |

Images



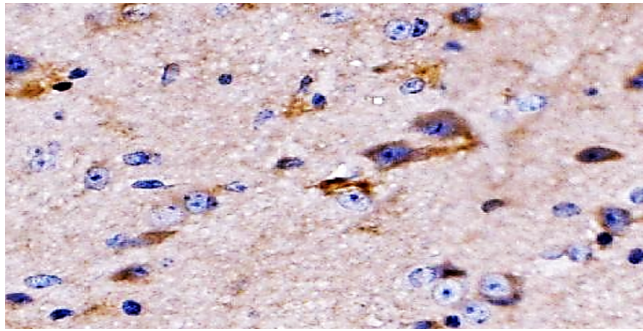
ARG43629 anti-ATG9A antibody IHC-P image

Immunohistochemistry: Formalin-fixed and paraffin-embedded Human Glioma tissue stained with ARG43629 anti-ATG9A antibody at 1:250 dilution. Antigen Retrieval: Heat mediated was performed using EDTA buffer pH 8.0.



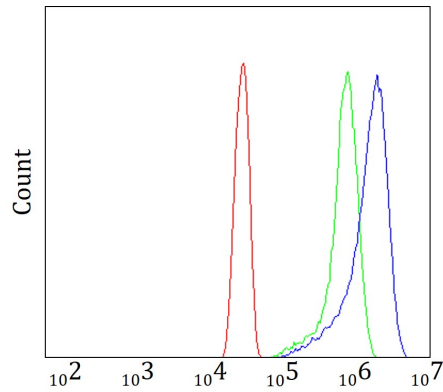
ARG43629 anti-ATG9A antibody WB image

Western blot: HepG2 and K562 cell lysates stained with ARG43629 anti-ATG9A antibody at 1:1000 dilution



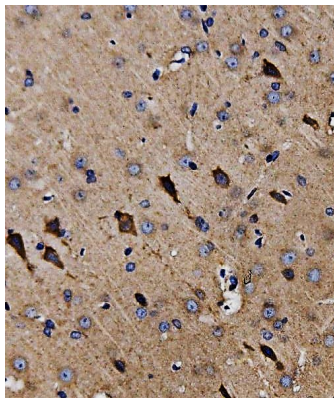
ARG43629 anti-ATG9A antibody IHC-P image

Immunohistochemistry: Formalin-fixed and paraffin-embedded Mouse Brain tissue stained with ARG43629 anti-ATG9A antibody at 1:250 dilution. Antigen Retrieval: Heat mediated was performed using EDTA buffer pH 8.0.



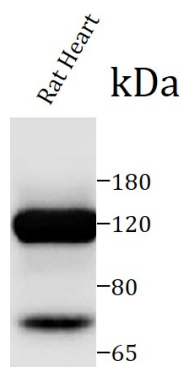
ARG43629 anti-ATG9A antibody FACS image

Flow Cytometry: HeLa cells were stained with ARG43629 anti-ATG9A antibody (blue) at 1:500 dilution, 1×10^6 cells for 30 min at RT. Unlabelled sample (red) was used as a control.



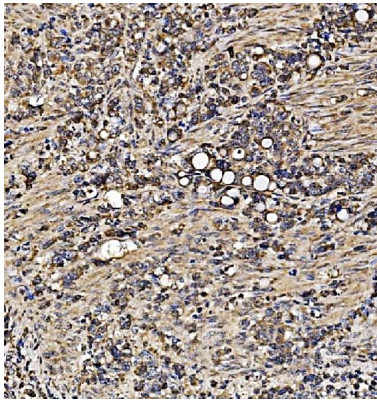
ARG43629 anti-ATG9A antibody IHC-P image

Immunohistochemistry: Formalin-fixed and paraffin-embedded Rat Brain tissue stained with ARG43629 anti-ATG9A antibody at 1:250 dilution. Antigen Retrieval: Heat mediated was performed using EDTA buffer pH 8.0.



ARG43629 anti-ATG9A antibody WB image

Western blot: Rat brain tissue stained with ARG43629 anti-ATG9A antibody at 1:1000 dilution



ARG43629 anti-ATG9A antibody IHC-P image

Immunohistochemistry: Formalin-fixed and paraffin-embedded Human Gastric Cancer Tissue stained with ARG43629 anti-ATG9A antibody at 1:250 dilution. Antigen Retrieval: Heat mediated was performed using EDTA buffer pH 8.0.